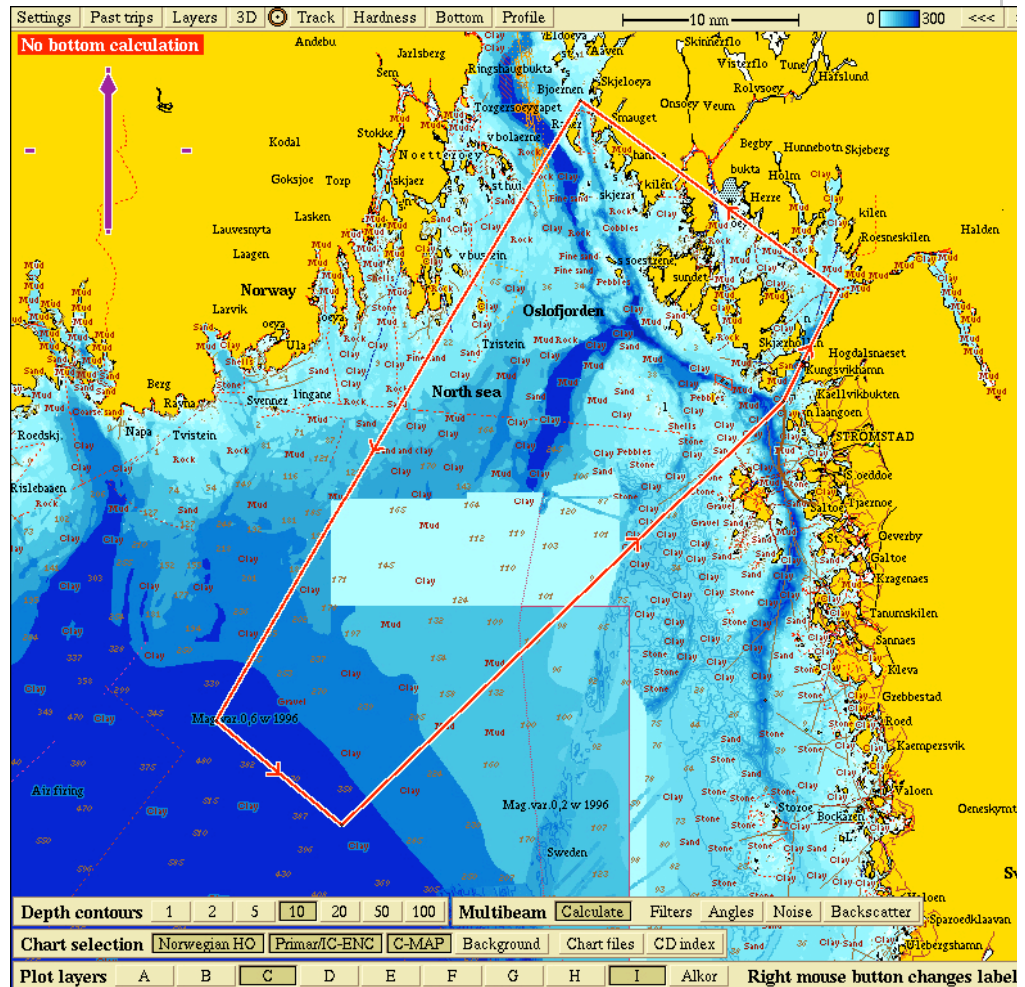


4.

ATTACH CHART showing (on an appropriate scale) the geographical area of intended work, positions of intended stations, tracks of survey lines, positions of moored/seabed equipment, areas to be fished

N 59° 15,685; E 10° 42,460
 N 58° 40,410; E 10° 02,275
 N 58° 34,490; E 10° 16,235
 N 58° 58,560; E 11° 04,780
 N 59° 04,910; E 11° 10,785



5.

a) TYPES OF SAMPLES REQUIRED (e.g., geological/water/plankton/fish/radionuclide)

b) METHODS OF OBTAINING SAMPLES (e.g., dredging/coring/drilling/fishing, etc. When using fishing gear, indicate fish stocks being worked, quantity of each species required, and quantity of fish to be retained on board).

6.

DETAILS OF MOORED EQUIPMENT

<u>Dates Laying</u>	<u>Recovery</u>	<u>Description</u> <u>Depth</u> <u>Latitude</u> <u>Longitude</u>