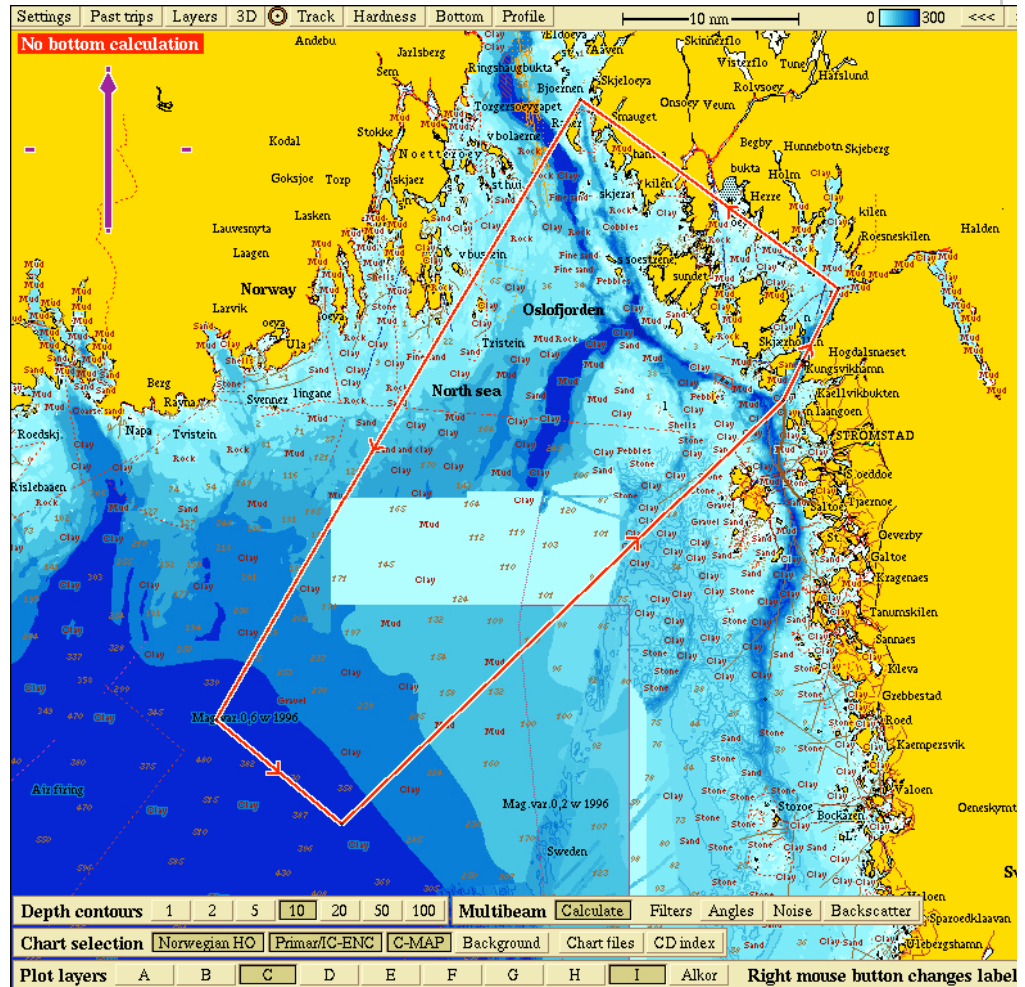


4.

ATTACH CHART showing (on an appropriate scale) the geographical area of intended work, positions of intended stations, tracks of survey lines, positions of moored/seabed equipment, areas to be fished

- N 59° 15,685; E 10° 42,460
- N 58° 40,410; E 10° 02,275
- N 58° 34,490; E 10° 16,235
- N 58° 58,560; E 11° 04,780
- N 59° 04,910; E 11° 10,785



5.

a) TYPES OF SAMPLES REQUIRED (e.g., geological/water/plankton/fish/radionuclide)

b) METHODS OF OBTAINING SAMPLES (e.g., dredging/coring/drilling/fishing, etc. When using fishing gear, indicate fish stocks being worked, quantity of each species required, and quantity of fish to be retained on board).

6.

DETAILS OF MOORED EQUIPMENT

Dates Laying	Recovery	Description			
		Depth			
		Latitude			
		Longitude			