

## Attachment #1

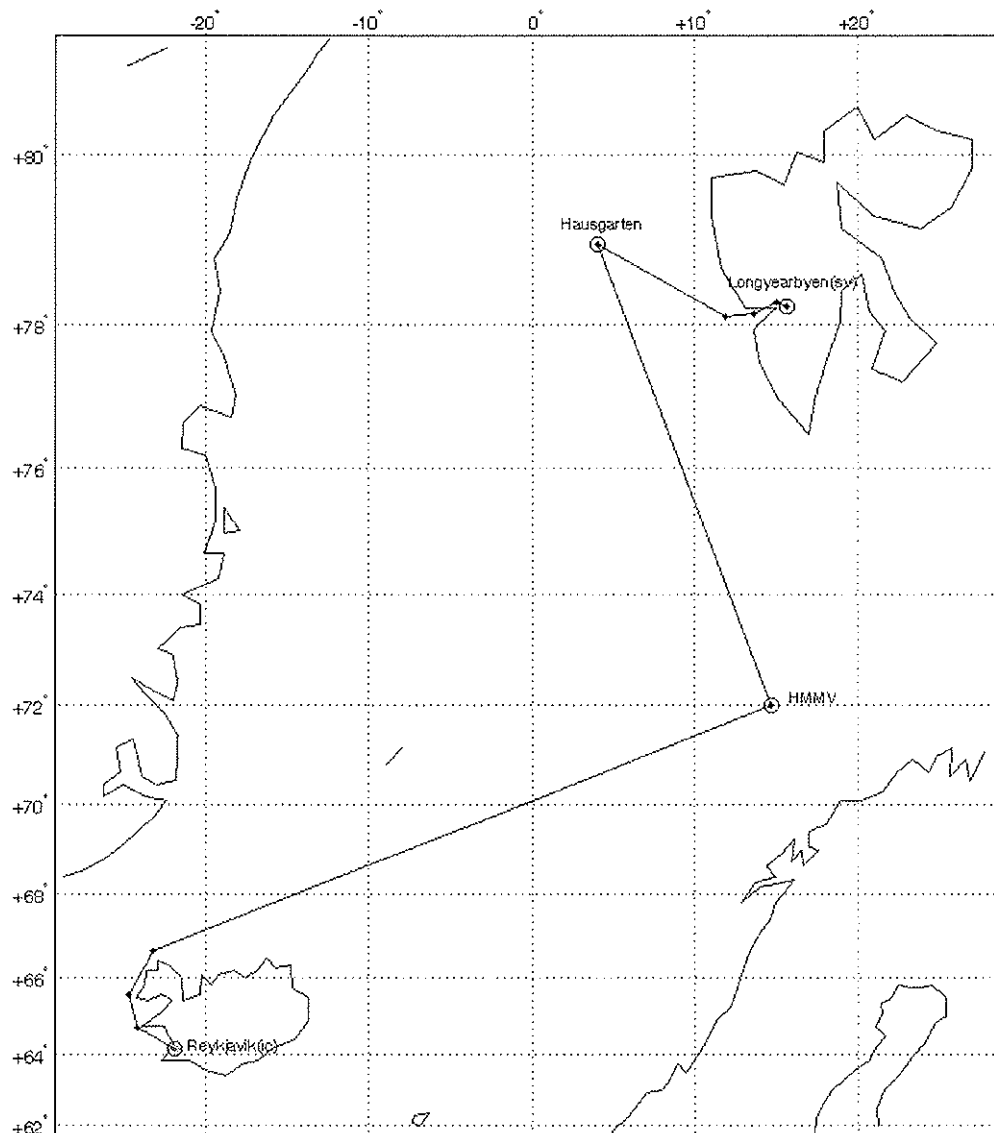


Fig. 1: Overview map of the area of investigation during "Polarstern" cruise ARK XXIV/2 in July / August 2009. Research areas are a) the HAUSGARTEN west off Svalbard and b) the Hakon Mosby Mud Volcano (HMMV) northwest of Norway.

**Site I – Slope system (deep-sea long-term observatory AWI- "Hausgarten" + Kongsfjord transect)**

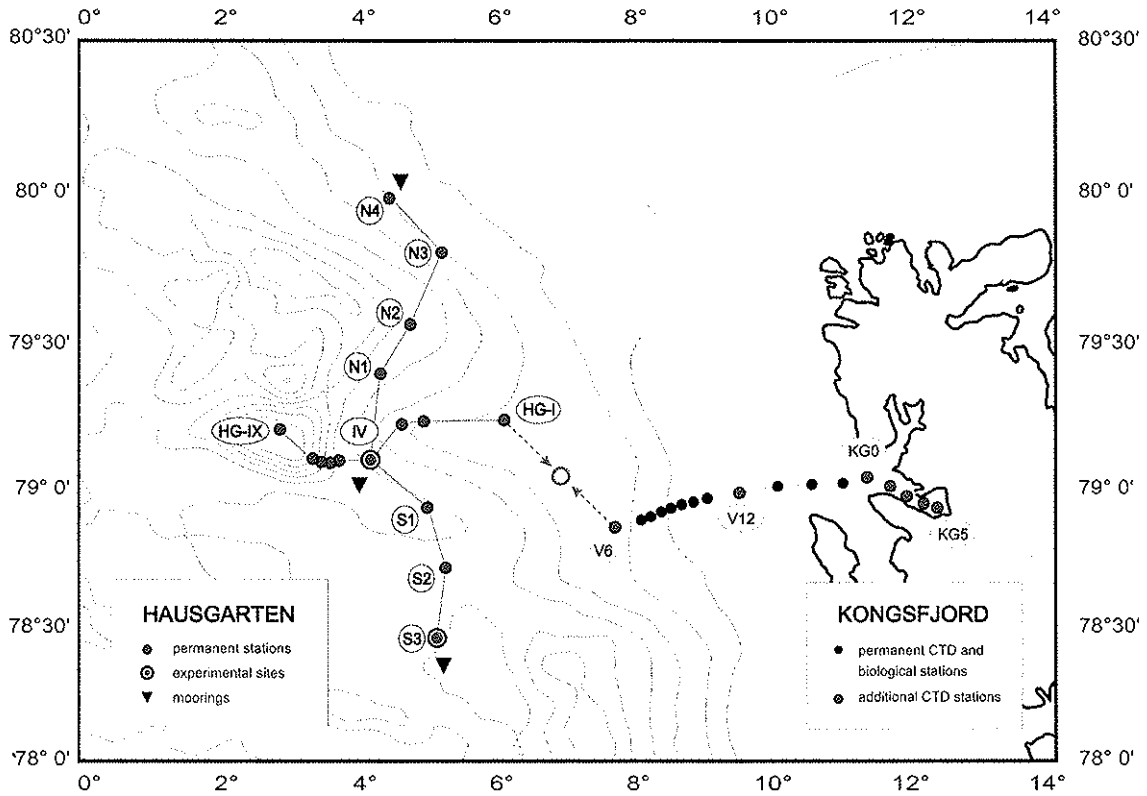


Fig. 2: Map of the Kongsfjord and HAUSGARTEN transects linked by a new 'intermediate' station (red open circle – south-east of HG I). The map indicates the location of the deep-sea long-term station "Hausgarten" with its central station at about 79° N and 004° E west off Svalbard.

## Attachment #2

### Site II - Cold seep system (Håkon Mosby Mud Volcano - HMMV)

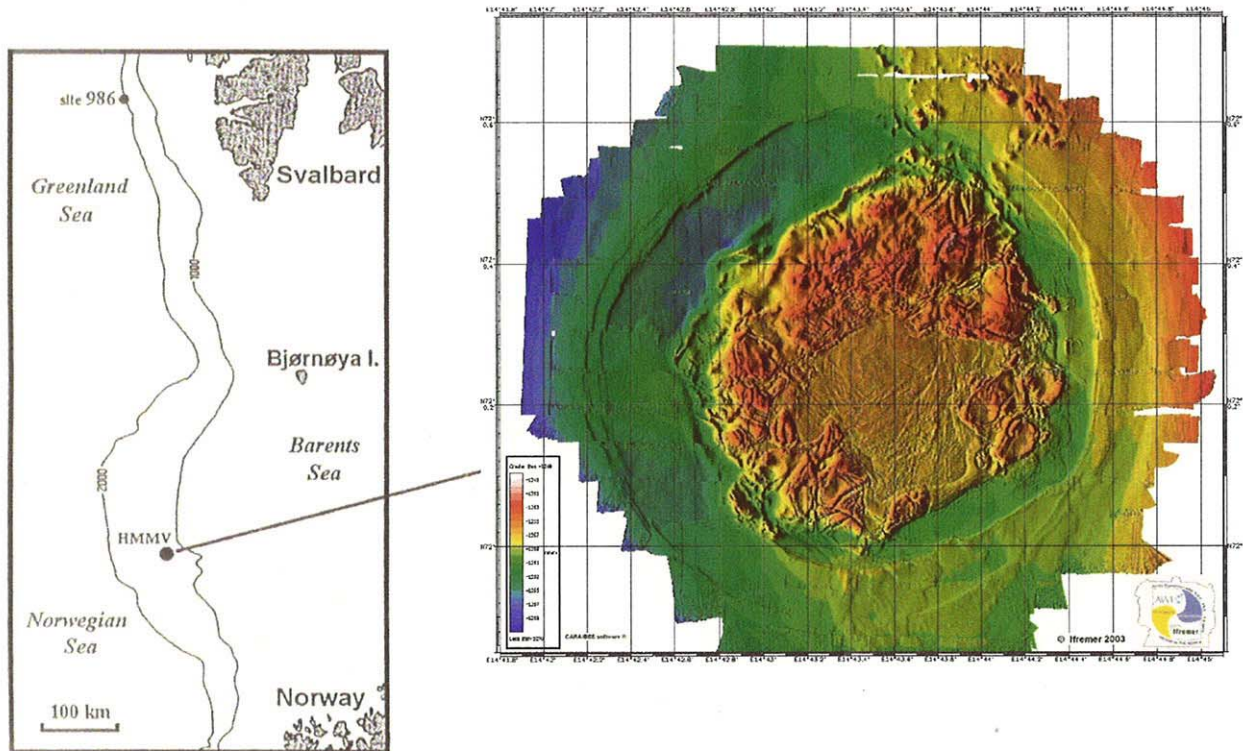


Fig. 3: Maps indicating the location (left, at 72 ° N and 14° 44' E at 1250 m depth) and structure (right) of the HMMV. Microbathymetry map provided by J.-P. Foucher et al. (IFREMER).