

Attachments:

Point 4 charts

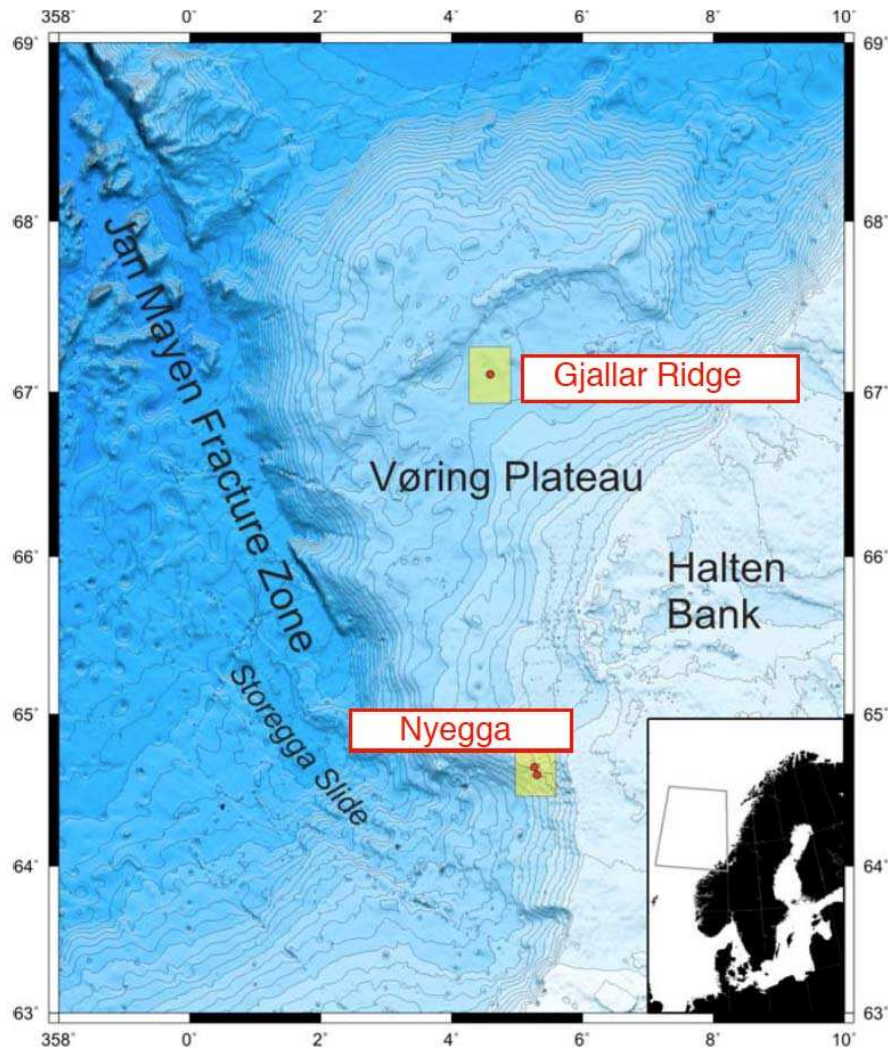


Figure 1: Regional map of the survey areas Gjallar Ridge (seismic p-cable survey) and Nyegga (electromagnetic survey on preexistent seismic data).

Figure 1 provides an overview of the survey area. Two electromagnetic experiments will be carried out in the Nyegga province and a 3D p-cable seismic survey at the Gjallar Ridge.