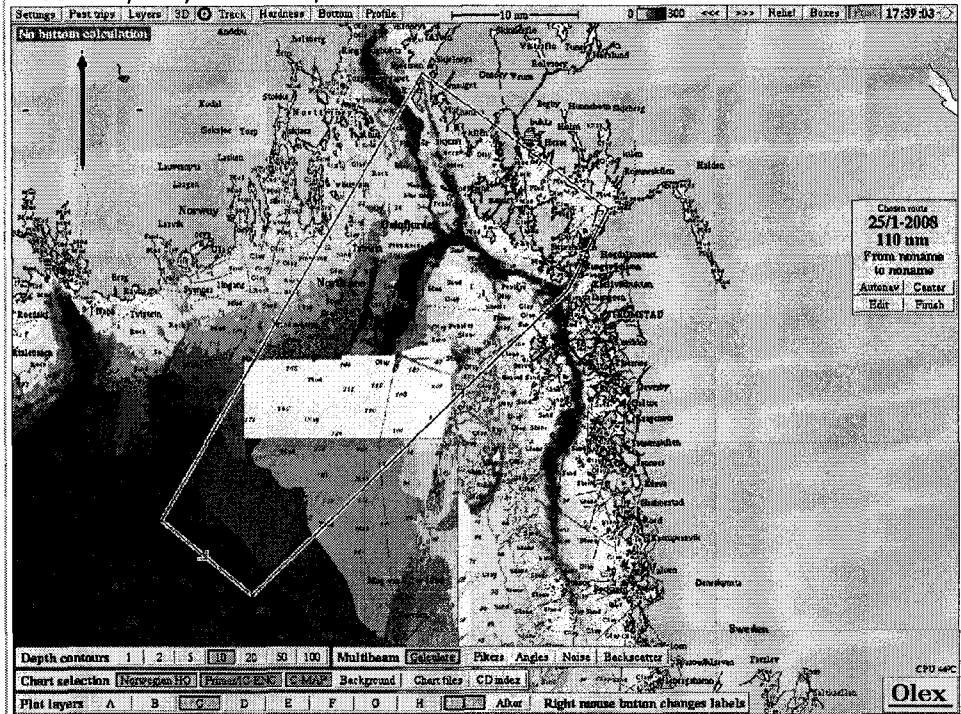


ATTACH CHART showing (on an appropriate scale) the geographical area of intended work, positions of intended stations, tracks of survey lines, positions of moored/seabed equipment, areas to be fished

N 59° 15,685; E 10° 42,460  
 N 58° 40,410; E 10° 02,275  
 N 58° 34,490; E 10° 16,235  
 N 58° 58,560; E 11° 04,780  
 N 59° 04,910; E 11° 10,785



5.	<p>a) <u>TYPES OF SAMPLES REQUIRED</u> (e.g., geological/water/plankton/fish/radionuclide)          Cold-water coral pieces of colonies (amount ca 2 kg).          Continuous sampling and measurement of passing water.</p>
	<p>b) <u>METHODS OF OBTAINING SAMPLES</u> (e.g., dredging/coring/drilling/fishing, etc.          When using fishing gear, indicate fish stocks being worked, quantity of each species required, and quantity of fish to be retained on board).          Sampling of cold-water corals (<i>Lophelia pertusa</i>) is conducted in the highest possible selective non-destructive manner using the manipulator on the ROV for the sampling.          ROV-aided deployment of recording instruments on bottom in a non fishing area.</p>
6.	<u>DETAILS OF MOORED EQUIPMENT</u>