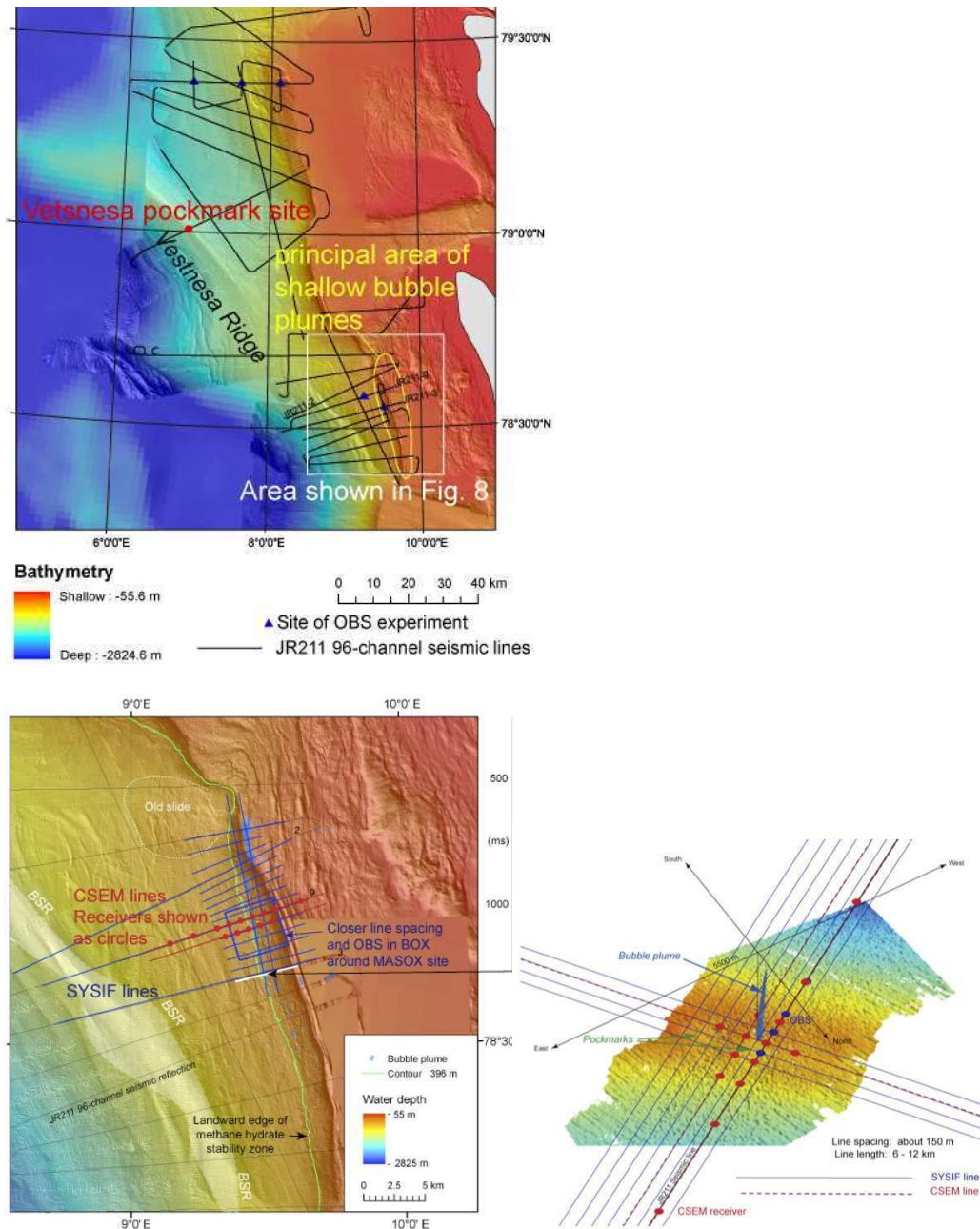


4. ATTACH CHART showing (on an appropriate scale) the geographical area of intended work, positions of intended stations, tracks of survey lines, positions of moored/seabed equipment, areas to be fished



Top panel shows seismic profiles acquired in 2008 and seafloor instrument sites in 2008. White box marks region of lower left panel and red dot shows centre of lower right map. Lower left panel: Red lines illustrate types of electromagnetic profile that will be acquired in the bubble plume area. The precise location of the profiles may be shifted a little to the south to focus around the final location of the MASOX site at 78°33.272'N, 9°28.699'E. Red circles mark potential seabed receiver locations (14 at this site). Lower right panel: red lines mark types of electromagnetic profile that will be acquired at the Vestnesa Ridge site and red symbols mark possible seabed receiver locations (14 at this site).

5. a) TYPES OF SAMPLES REQUIRED (e.g., geological/water/plankton/fish/radionuclide)

The cruise will be entirely geophysical in nature and no sampling is planned.

b) METHODS OF OBTAINING SAMPLES (e.g., dredging/coring/drilling/fishing, etc. When using fishing gear, indicate fish stocks being worked, quantity of each species required, and quantity of fish to be retained on board).

Not applicable