

„SOLEA“
Cruise 660
REPORT
17.08. – 26.08.2012

Personnel

Name	Institution
Kay Panten	SF
Thomas Kehlert	SF
Christine Petersen-Frey	SF
Christian Braun	SF
Theresa Conradi	SF
Birger Kreutz	Multimar

Objectives

1. To participate in the ICES co-ordinated “International **B**eam Trawl Survey” in the North Sea
2. Distribution of temperature and salinity in the area of investigation

Narrative (Fig. 1)

The port of Cuxhaven was left on 17.8., steaming over night with good weather conditions to the area scheduled for the Beam Trawl Survey west of Sylt, north of the Danish border (ca. 55°N). The following days the offshore stations were sampled from south to north, while the inshore stations were investigated from north to south. Due to a storm front the survey was aborted early in the afternoon on August 25. With the abandonment of two hauls the survey ended in the early hours of 26.8. in Cuxhaven.

Results (Fig. 2 – 7)

A total of 53 valid half an hour hauls were made using the 7m beam trawl. At 53 stations salinity and temperature were measured.

The species composition and distribution showed the usual geographic pattern with dab as the most frequent fish, followed by plaice, starry ray and grey gurnad.

Towards the north and the west soon the importance of long rough dab and starry ray in the biomass increases. Still, in the survey area some larger (up to 50 cm) plaice can be found, although quite sporadically.

Noticeable this year was the low occurrence of grey gurnard in the offshore rectangles. Furthermore, a high abundance of plaice in coastal rectangles 41F7 and 42f7 was found.



Dipl.-Biol. K. Panten

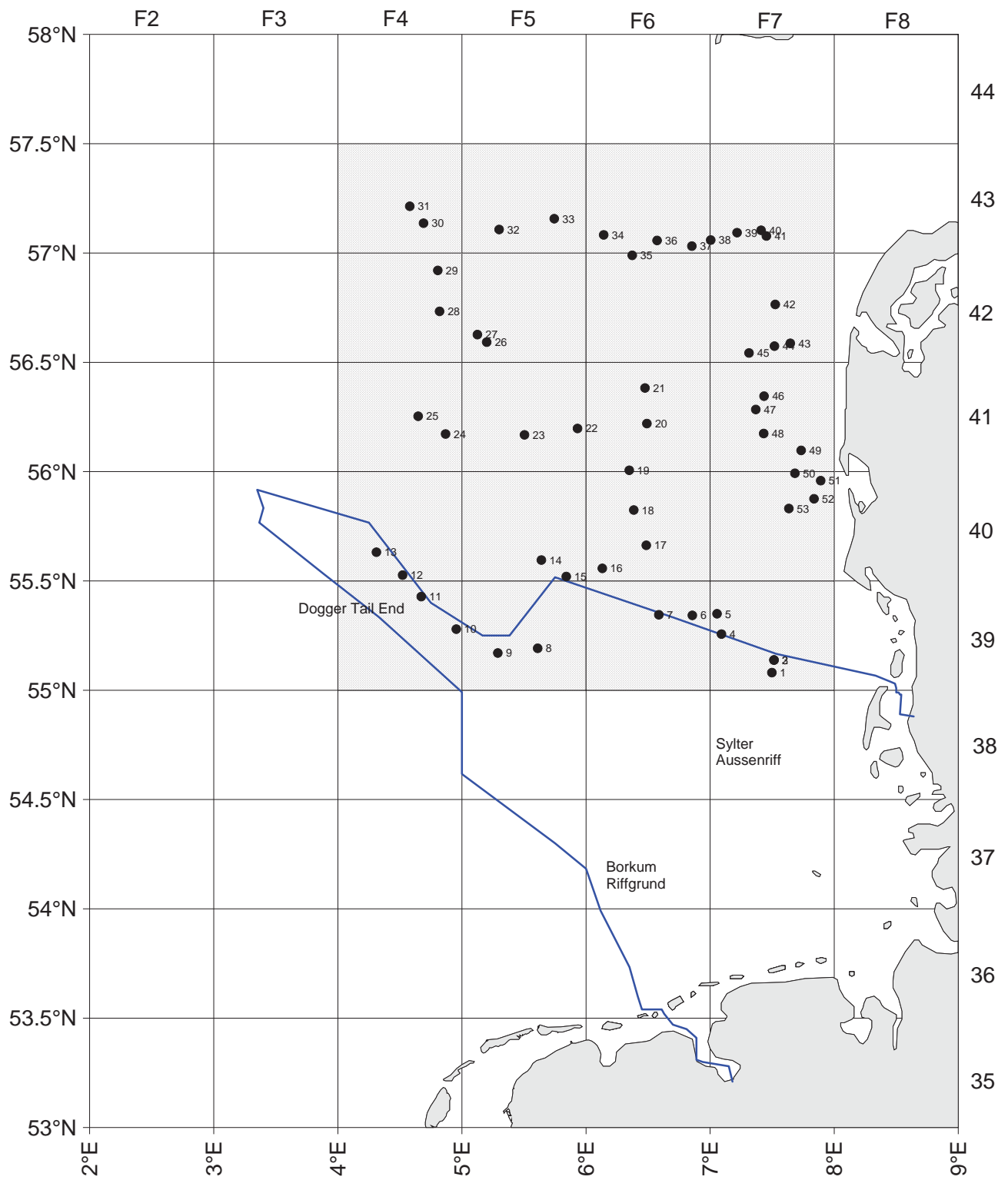


Fig. 1: "Solea", Cruise no. 660, Haul positions and area of investigation

Catch composition and length distribution during Beam Trawl Survey

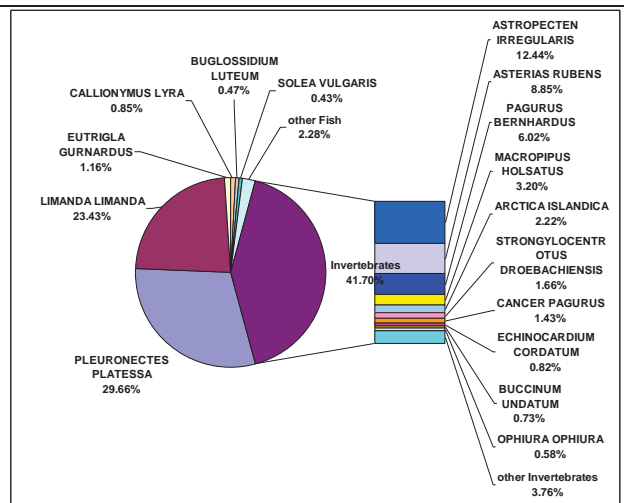
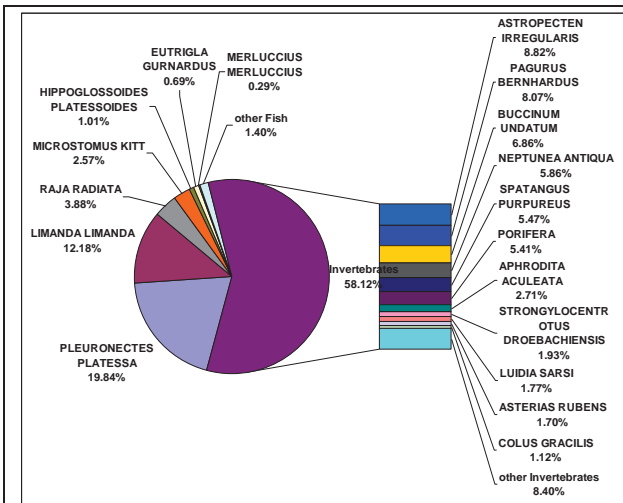


Fig. 2: Catch composition in 39-43F4&5 (offshore)

Fig. 3: Catch composition in 39-43F6&7 (inshore)

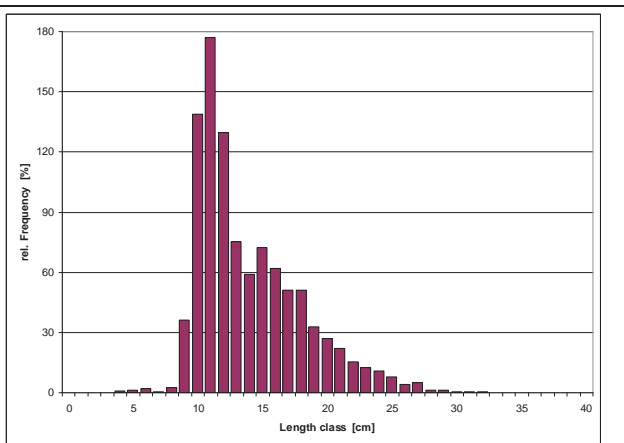
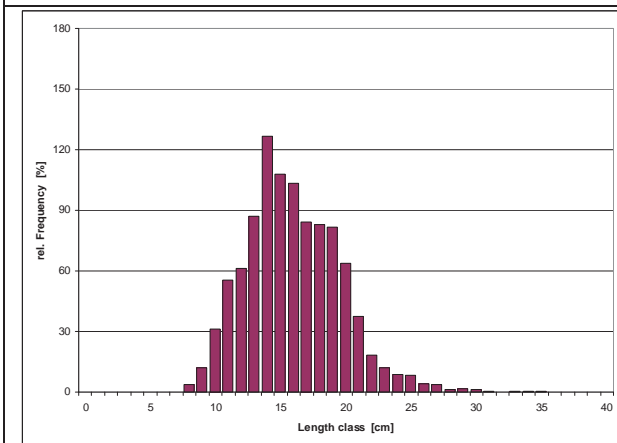


Fig. 4: Length distribution of Dab in 39-43F4&5

Fig. 5: Length distribution of Dab in 39-43F6&7

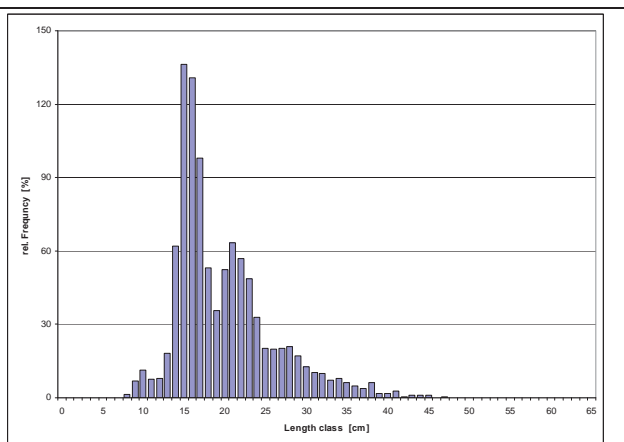
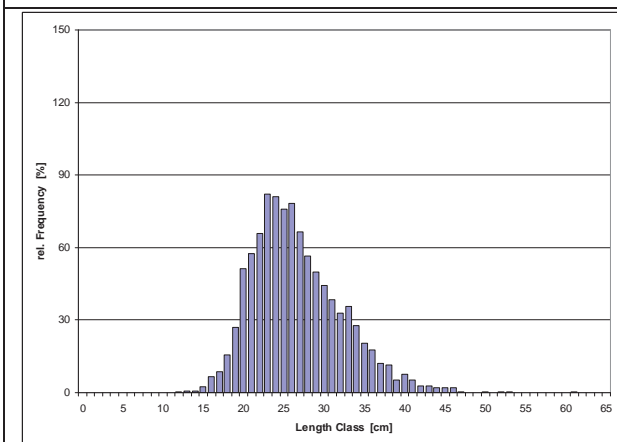


Fig. 6: Length distribution of Plaice in 39-43F4&5

Fig. 7: Length distribution of Plaice in 39-43F6&7