

**„SOLEA“**  
**REPORT Cruise 626**  
**12.08. - 27.08.2010**

## **Personnel**

<b>Name</b>	<b>Institution</b>
Kay Panten	SF
Thomas Kehlert	SF
Christine Petersen-Frey	SF
Christina Breidbach	SF
Florian Krau	SF
Birger Kreutz	Multimar
Friedericke Lange	SF

## **Objectives**

1. To participate in the ICES co-ordinated “International **B**eam **T**rawl **S**urvey” in the North Sea
2. Biological monitoring of the fish fauna in proposed FFH protected areas in the German Bight
3. Distribution of temperature and salinity in the area of investigation

## **Narrative (Fig. 1)**

The port of Cuxhaven was left on 12.8., steaming over night with good weather conditions to the area scheduled for the Beam Trawl Survey west of Sylt, north of the Danish border (ca. 55°N). On the third day of the survey priority was given to monitoring the FFH area “Dogger Tail End”. The following days the offshore stations were sampled with different courses depend on wind direction and wind force. On August 23 the BTS was finished and a gale-force wind forced the stay in Esbjerg Harbour for two days. With this opportunity the representative of multimar left the ship with the up to now attained aquarium stock. Back at sea the FFH monitoring was continued at “Sylter Außenriff”. Due to loss of time “Borkum Riffgrund” can’t carried out this year. The cruise ended in Cuxhaven in the evening on 26.8.

## **Results (Fig. 2 – 7)**

A total of 55 half an hour and valid hauls were made using the 7m beam trawl. Additional 20 15min hauls were carried out in the FFH areas. At 61 stations salinity and temperature were measured.

The species composition distribution showed the usual geographic pattern with dab as the most frequent fish, followed by plaice.

Toward the north and the west soon the importance of long rough dab and starry ray in the biomass increases. Still, in the survey area some larger (up to 50 cm) plaice can be found, although quite sporadically.

Also in the FFH areas, nothing unusual was caught. In the Sylt area the common starfish (*Asterias rubens*) dominates with more than 80% in the catch composition.



Dipl.-Biol. K. Panten

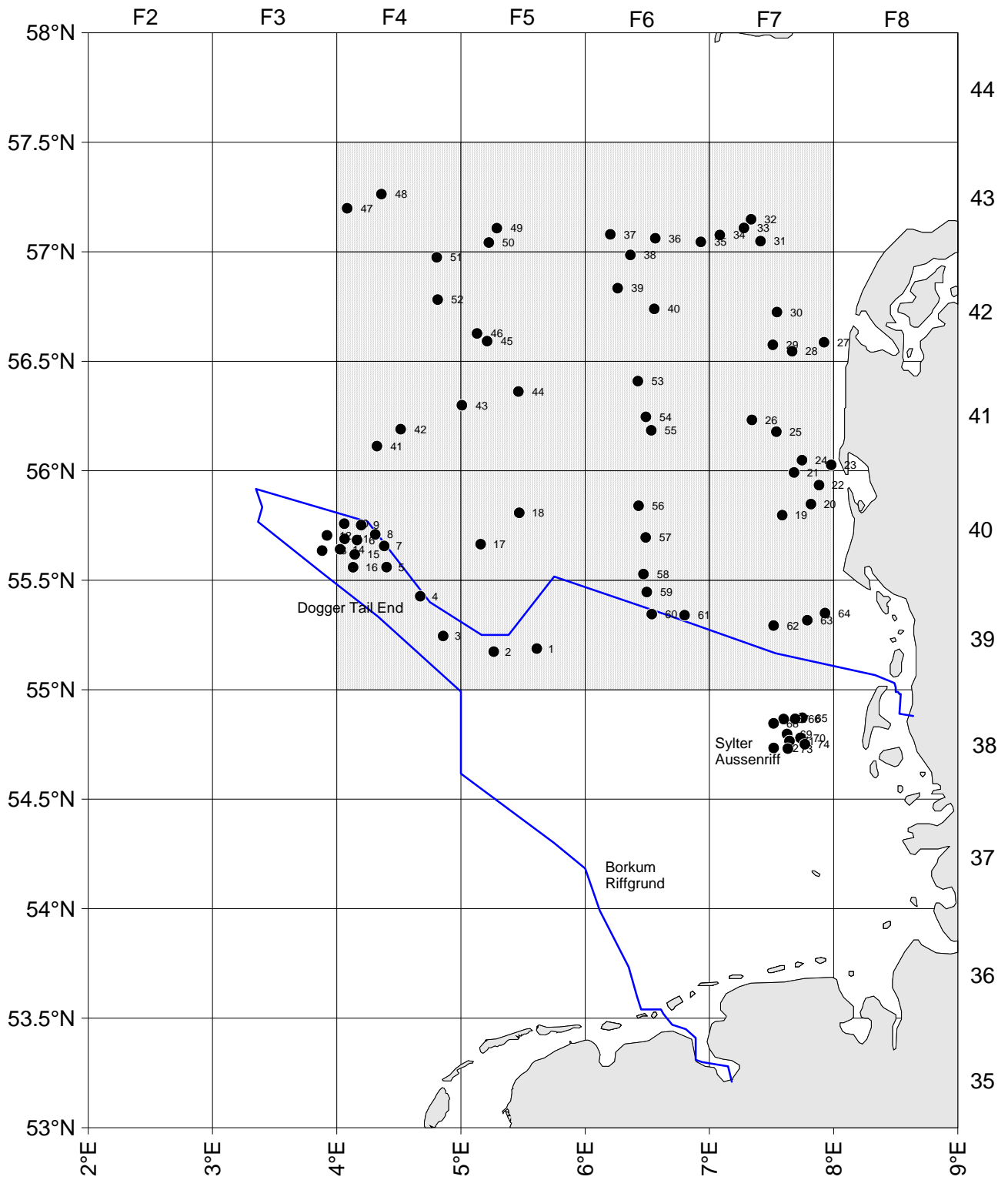
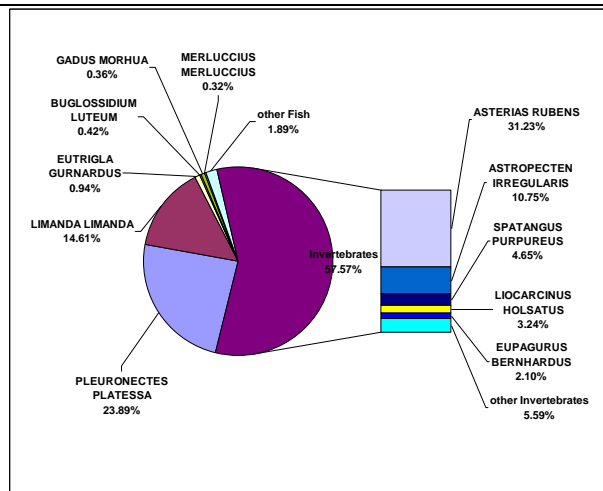
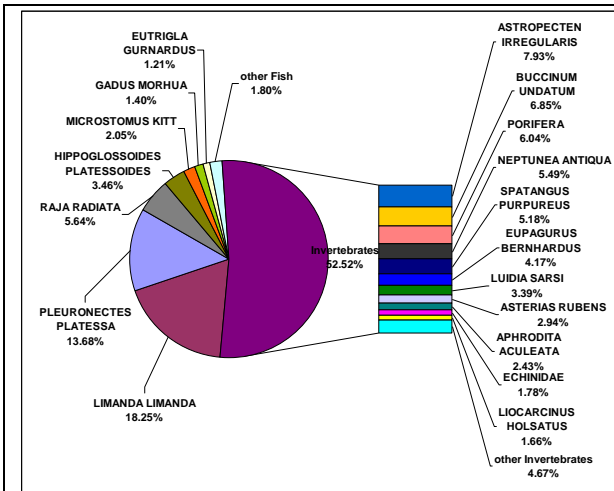


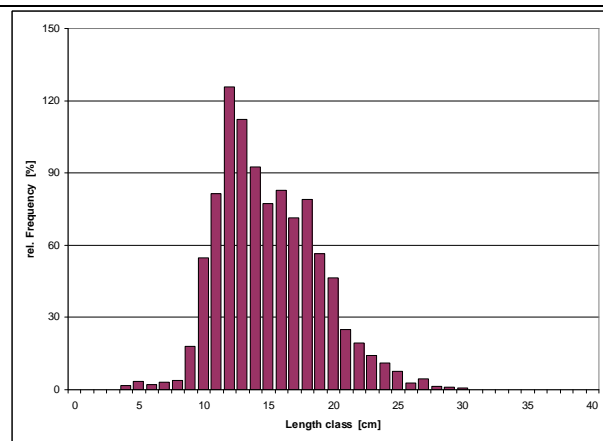
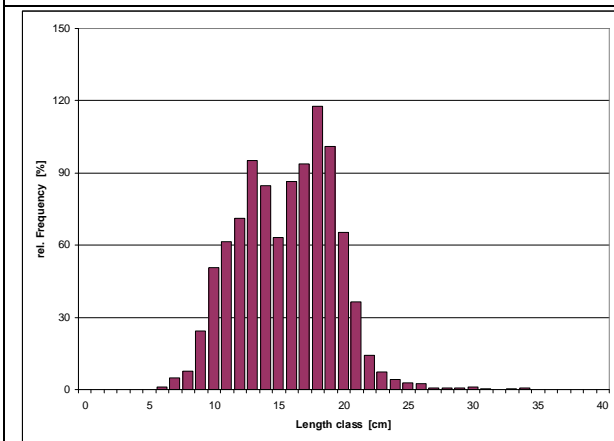
Fig. 1: "Solea", Cruise no. 626, Haul positions and area of investigation

# Catch composition and length distribution during Beam Trawl Survey



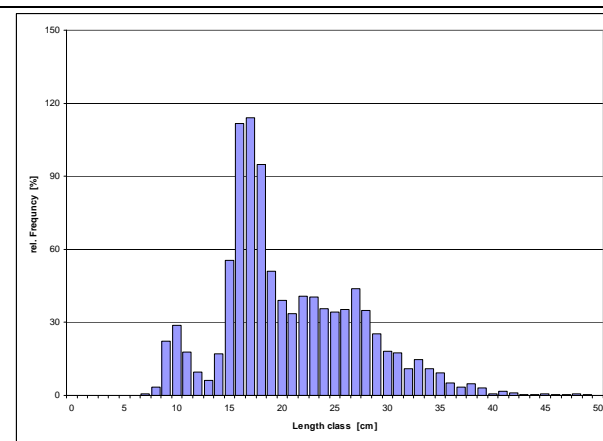
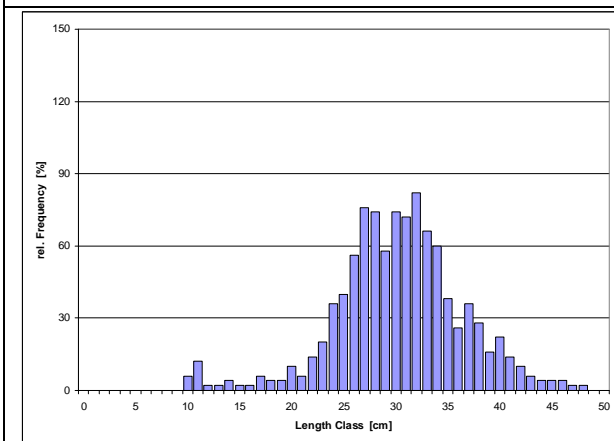
**Fig. 2: Catch composition in 39-43F4&5 (offshore)**

**Fig. 3: Catch composition in 39-43F6&7 (inshore)**



**Fig. 4: Length distribution of Dab in 39-43F4&5**

**Fig. 5: Length distribution of Dab in 39-43F6&7**



**Fig. 6: Length distribution of Plaice in 39-43F4&5**

**Fig. 7: Length distribution of Plaice in 39-43F6&7**

## Catch composition and length distribution during FFH Monitoring

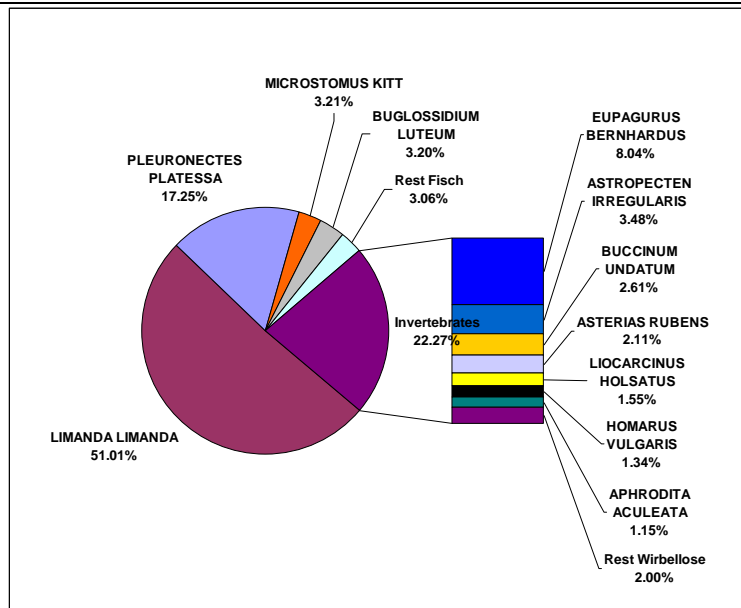


Fig. 8: Catch composition in FFH-Area „Dogger Tail End“

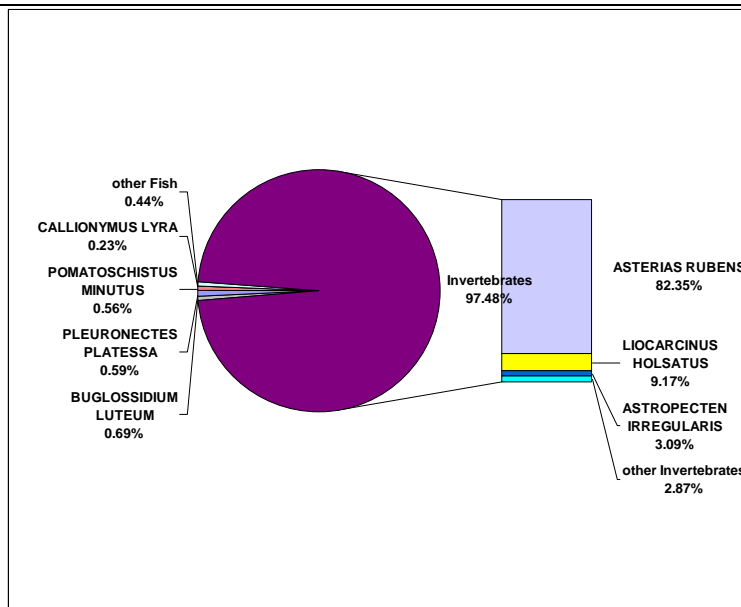


Fig. 9: Catch composition in FFH-Area „Sylter Aussenriff“

# CRUISE SUMMARY REPORT

FOR COLLATING CENTRE USE

Centre: DOD Ref. No.:

Is data exchange restricted  Yes  In part  No

**SHIP** enter the full name and international radio call sign of the ship from which the data were collected, and indicate the type of ship, for example, research ship; ship of opportunity, naval survey vessel; etc.

Name: SoleaCall Sign: DBFHType of ship: FRVCRUISE NO. / NAME 626

enter the unique number, name or acronym assigned to the cruise (or cruise leg, if appropriate).

CRUISE PERIOD start 12/08/2010 to 27/08/2010 end  
(set sail) day/ month/ year day/ month/ year (return to port)

PORT OF DEPARTURE (enter name and country) Cuxhaven, GermanyPORT OF RETURN (enter name and country) Cuxhaven, Germany

**RESPONSIBLE LABORATORY** enter name and address of the laboratory responsible for coordinating the scientific planning of the cruise

Name: SF (Institut of Sea Fisheries)Address: Palmaille 9, 22767 HamburgCountry: Germany

**CHIEF SCIENTIST(S)** enter name and laboratory of the person(s) in charge of the scientific work (chief of mission) during the cruise.

Dipl. Biol. K. Panten

**OBJECTIVES AND BRIEF NARRATIVE OF CRUISE** enter sufficient information about the purpose and nature of the cruise so as to provide the context in which the report data were collected.

International Beam Trawl Survey

**PROJECT (IF APPLICABLE)** if the cruise is designated as part of a larger scale cooperative project (or expedition), then enter the name of the project, and of organisation responsible for co-ordinating the project.

Project name: International Beam Trawl SurveyCoordinating body: ICES WGBEAM







**TRACK CHART:** You are strongly encouraged to submit, with the completed report, an annotated track chart illustrating the route followed and the points where measurements were taken.

Insert a tick(✓) in this box if a track chart is supplied



**GENERAL OCEAN AREA(S):** Enter the names of the oceans and/or seas in which data were collected during the cruise – please use commonly recognised names (see, for example, International Hydrographic Bureau Special Publication No. 23, 'Limits of Oceans and Seas').

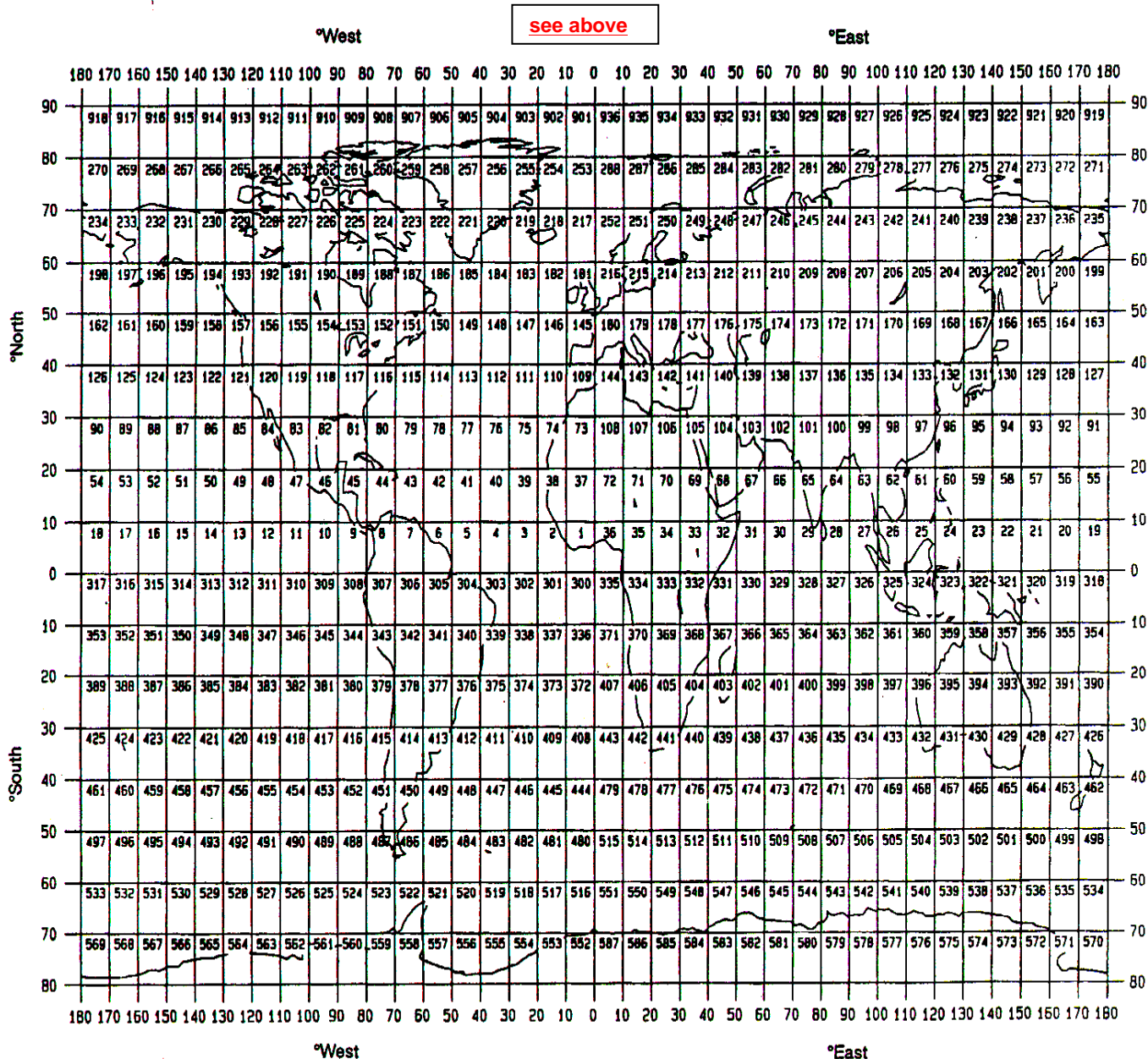
North Sea

**SPECIFIC AREAS:** If the cruise activities were concentrated in a specific area(s) of an ocean or sea, then enter a description of the area(s). Such descriptions may include references to local geographic areas, to sea floor features, or to geographic coordinates.

**Please insert here the number of each square in which data were collected from the below given chart**

216

**GEOGRAPHIC COVERAGE - INSERT 'X' IN EACH SQUARE IN WHICH DATA WERE COLLECTED**



**THANK YOU FOR YOUR COOPERATION**

Please send your completed report without delay to the collating centre indicated on the cover page