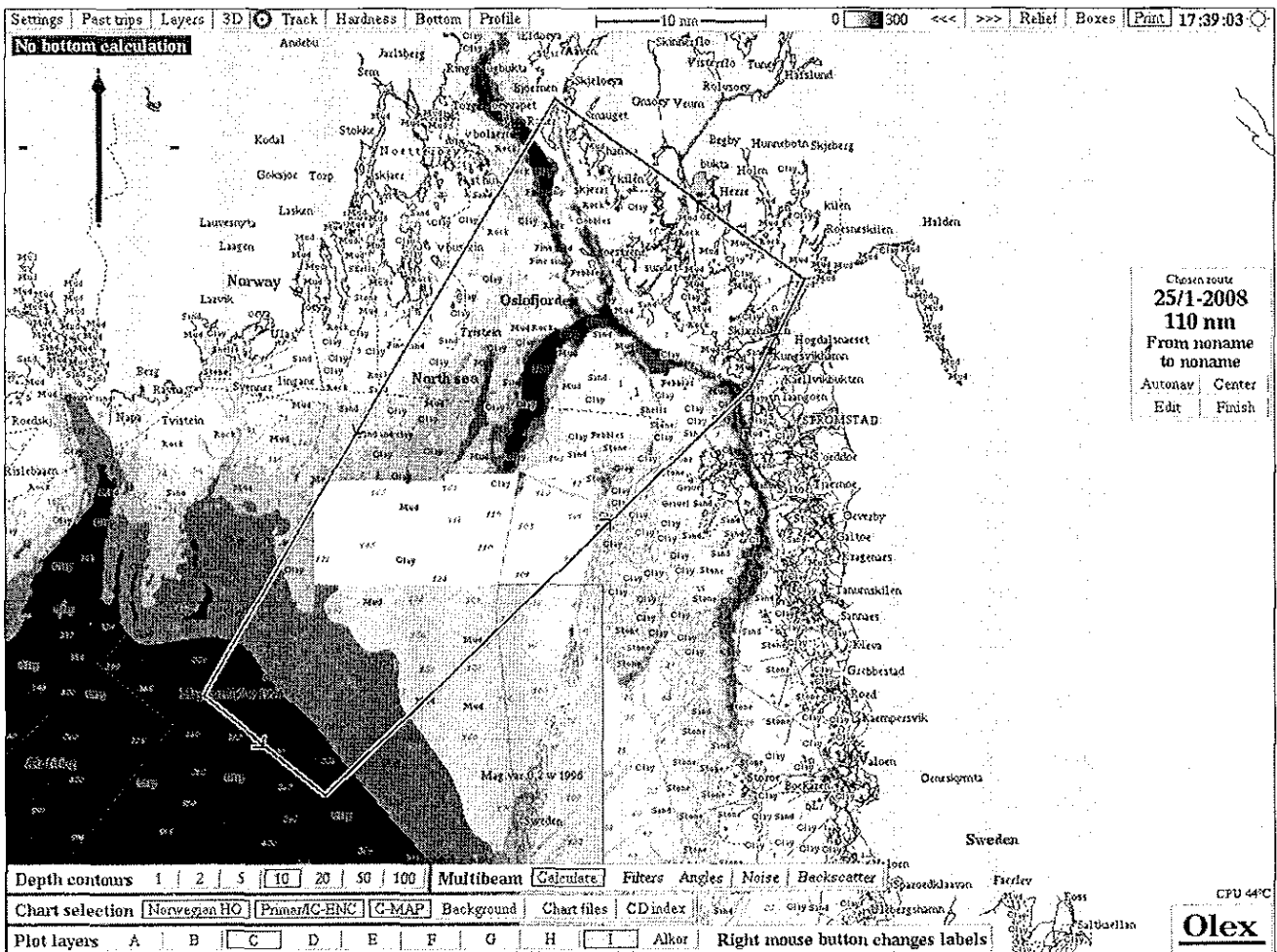


4. ATTACH CHART showing (on an appropriate scale) the geographical area of intended work, positions of intended stations, tracks of survey lines, positions of moored/seabed equipment, areas to be fished

N 59° 15,685; E 10° 42,460  
 N 58° 40,410; E 10° 02,275  
 N 58° 34,490; E 10° 16,235  
 N 58° 58,560; E 11° 04,780  
 N 59° 04,910; E 11° 10,785



5. a) TYPES OF SAMPLES REQUIRED (e.g., geological/water/plankton/fish/radionuclide)

Continuous measurement of passing water.

Selective ROV samples of benthic fauna specimens will be obtained for identification of species that can not be identified from video. We also plan to obtain some selective ROV-samples from the large populations of the deep-water coral *Lophelia pertusa* found in the area in 2002-6 for experiments and genetic analysis (preliminary results from genetic analysis of *L. pertusa*-populations in the adjacent Kosterfjord indicate strong genetic diversion from *L. pertusa*-populations on the Atlantic margin, and it is of high interest both scientifically and for management purposes to learn more about the genetic composition of the Skagerrak populations of *L. pertusa*, in relation to other populations. Necessary permits for export of *L. pertusa* from Norway and import to Sweden have been obtained.

b) METHODS OF OBTAINING SAMPLES (e.g., dredging/coring/drilling/fishing, etc. When using fishing gear, indicate fish stocks being worked, quantity of each species required, and quantity of fish to be retained on board).

Selective ROV samples (obtained by manipulator and suction sampler). ROV-aided deployment of recording instruments on bottom in a non fishing area.