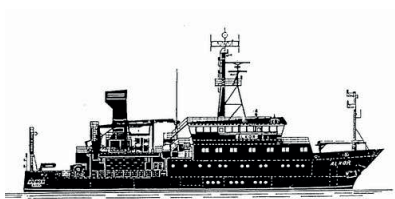




**IFM-GEOMAR**

Leibniz-Institut für Meereswissenschaften  
an der Universität Kiel

**RV ALKOR**  
**Fahrtbericht / Cruise Report**  
**AL374**



29.05. – 14.06.2011  
Kiel - Kiel

**ECO<sub>2</sub>**

Sub-seabed CO<sub>2</sub> Storage:  
Impact on Marine Ecosystems



Berichte aus dem Leibniz-Institut  
für Meereswissenschaften an der  
Christian-Albrechts-Universität zu Kiel

**Nr. 51**

Dezember 2011





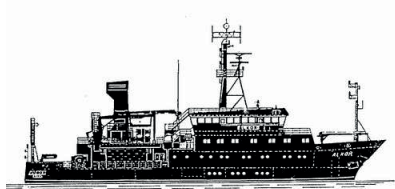
**IFM-GEOMAR**

Leibniz-Institut für Meereswissenschaften  
an der Universität Kiel

# **RV ALKOR**

## **Fahrtbericht / Cruise Report**

### **AL374**



29.05. – 14.06.2011  
Kiel - Kiel

# ECO<sub>2</sub>

Sub-seabed CO<sub>2</sub> Storage:  
Impact on Marine Ecosystems



Berichte aus dem Leibniz-Institut  
für Meereswissenschaften an der  
Christian-Albrechts-Universität zu Kiel

**Nr. 51**

Dezember 2011

ISSN Nr.: 1614-6298



Das Leibniz-Institut für Meereswissenschaften  
ist ein Institut der Wissenschaftsgemeinschaft  
Gottfried Wilhelm Leibniz (WGL)

The Leibniz-Institute of Marine Sciences is a  
member of the Leibniz Association  
(Wissenschaftsgemeinschaft Gottfried  
Wilhelm Leibniz).

**Herausgeber / Editor:**

P. Linke and AL374 cruise participants

**IFM-GEOMAR Report**

ISSN Nr.: 1614-6298

**Leibniz-Institut für Meereswissenschaften / Leibniz Institute of Marine Sciences**

IFM-GEOMAR  
Dienstgebäude Westufer / West Shore Building  
Düsternbrooker Weg 20  
D-24105 Kiel  
Germany

**Leibniz-Institut für Meereswissenschaften / Leibniz Institute of Marine Sciences**

IFM-GEOMAR  
Dienstgebäude Ostufer / East Shore Building  
Wischhofstr. 1-3  
D-24148 Kiel  
Germany

Tel.: ++49 431 600-0  
Fax: ++49 431 600-2805  
[www.ifm-geomar.de](http://www.ifm-geomar.de)

## TABLE OF CONTENTS

|   |    |
|---|----|
| 1. Objectives .....   | 2  |
| 2. Cruise narrative .....   | 3  |
| 3. Cruise participants .....  | 7  |
| 4. Geophysical measurements .....   | 8  |
| 5- Water/gas sampling and hydrographic monitoring.....                      | 14 |
| 6. Continuous and simultaneous gas measurements.....                        | 32 |
| 7. Water column monitoring, sediment biogeochemistry and microbiology ..... | 38 |
| 8. Studies on benthic community structure and diversity.....                | 41 |
| 9. Satellite lander deployments .....                                       | 42 |
| 10. Acknowledgements.....   | 43 |
| 11. References.....   | 44 |
| Annex I: List of stations .....   | 45 |
| Annex II: List of multibeam and echosounder profiles.....                   | 49 |
| Annex III: DIC and dissolved gas samples .....                              | 53 |

## 1. OBJECTIVES

ALKOR cruise 374 was the first cruise conducted in the framework of the EU project ECO2 (funded through the EU call “Ocean of Tomorrow”), which sets out to assess the risks and long-term impacts associated with the storage of CO<sub>2</sub> below the seabed. Carbon Capture and Storage (CCS) is regarded as a key technology for the reduction of CO<sub>2</sub> emissions from power plants and other industrial sources at the European and international level. The EU decided to support a selected portfolio of demonstration projects to promote, at industrial scale, the implementation of CCS in Europe. Several of these projects aim to store CO<sub>2</sub> below the seabed. However, little is known about the short-term and long-term impacts of CO<sub>2</sub> storage on marine ecosystems even though CO<sub>2</sub> has been stored in the North Sea (Sleipner) for more than 14 years and for 1 year in the Barents Sea (Snøhvit). In this regard, ECO2 will assess the likelihood and impact of leakage on marine ecosystems, apply novel monitoring techniques to detect and quantify the fluxes of formation fluids, natural gas, and CO<sub>2</sub> from storage sites, and, finally, develop a best practice guide for the management of sub-seabed CO<sub>2</sub> storage sites considering the precautionary principle and estimate the costs of monitoring and remediation. Therefore, the project partners will study existing sub-seabed storage sites in the Norwegian sector of the North Sea and the Barents Sea as well as natural gas seeps at the seafloor. The expedition AL374 included both facets of the project.

The first destination of the cruise was the Salt Dome Juist working area where indications of natural CO<sub>2</sub> seepage have been found during a pre-site mapping study in October 2008 (AL328). Gas bubbles were observed in areas where strong acoustic flares, low pH and high concentrations of CO<sub>2</sub> were determined near the seafloor (McGinnis et al., 2011). The specific area has been revisited in July 2009 (RV Celtic Explorer), showing no elevated seepage activity at Salt Dome Juist, e.g. by CO<sub>2</sub>, pH anomaly, or by acoustic flares. However, pH in surface sediment dropped down to about 5, probably indicating both, transport of dissolved CO<sub>2</sub> from a deeper source and respiration. We planned to reinvestigate the Southern North Sea to extend our sampling campaign to salt dome related fracture zones and seismic “gas chimney” structures, determined in TGS-NOPEC seismic data. Localisation of seepage and determination of background concentration was performed by the newly developed video-guided pump-CTD, connected to Membrane Inlet Mass Spectrometry on board the vessel. Varying contributions in the fluids from shallow or deep sources and secondary degradation processes in the benthic filter, affecting the C-, O-, S-, and N-cycle, will be investigated by (isotope-) geochemical analyses. Furthermore, samples for the study the associated benthic fauna and microorganisms were obtained.

The other major working area was the industrial CO<sub>2</sub> storage site Sleipner in the Norwegian sector. Here, abandoned well sites close to the CO<sub>2</sub> injection point in approx. 1000 m sediment depth and the area above the suspected subsurface CO<sub>2</sub> plume were surveyed to look for any

signs of gas seepage. Again video-guided sensors to detect for methane, carbon dioxide, and pH were deployed and bottom water was pumped directly into a mass spectrometer on board the ship for analysis. Additionally, sediment samples were taken at Sleipner for geochemical analysis and physiological experiments back onshore. Finally, benthic landers were placed on the seabed above the central injection point to record the current regime and to investigate the natural oxygen consumption and carbon dioxide production by the shallow sub-seabed ecosystem.

Although the main research focus of the cruise was in the southern German and Norwegian EEZ of the North Sea we visited also the UK sector. Station work focused on the abandoned well site 22/4b which has been intensively studied by our institution during previous research cruises with ALKOR (AL66, 259, 290). During this cruise a short survey with water sampling and deployment of two small landers was planned in preparation of a larger survey involving ExxonMobil and the Department of Energy and Climate Change (DECC) to quantify the emission of methane from the crater on the seafloor into the water column and the atmosphere.

## **2. CRUISE NARRATIVE**

Cruise AL374 started on Sunday, 29 May at 10:00 from the pier of the west-shore IFM-GEOMAR building with 11 scientists on board. RV ALKOR passed through the locks at Kiel/Holtenau and headed through the Kiel Kanal towards Brunsbüttel. The scientists used the time to establish the laboratories and prepare the instruments for the station work. At 18:00 the vessel passed through the locks at Brunsbüttel into the River Elbe and arrived at 5:00 a.m. at the first station in the working area Salt Dome Juist in the German EEZ.

Here, we deployed the Video CTD and conducted a transect where flares of gas discharge had been observed during cruise AL372 about 3 weeks before. During this transect, flares were observed in the 38 kHz fish finder echosounder and the discharge of gas bubbles could be observed in the video. This transect was followed by a parallel transect with OFOS which was equipped with micro electrodes. After this, another cast with the CTD was performed to record the physical oceanographic parameters and derive the sound velocity profile of the water column for the calibration of the multibeam array. This cast was followed by another video-guided CTD transect, where the CTD-rosette was connected by a hose to a submerged pump mounted on the wire and water was pumped towards a Membrane Inlet Mass Spectrometer in the dry lab of the vessel. Unfortunately, the flares observed in the morning had vanished. During the evening and the night the calibration of the multibeam array and 2 dense bathymetric grids were performed. As this did not show any features in the water column, we started after a short survey of 3 additional potential flare positions the transit to Sleipner Vest in the Norwegian EEZ. Here, we arrived on June 1 in heavy swell with Bft. 7 and had to stay in stand-by next to the platform (Fig. 1).



**Fig. 1:** Arrival at the Sleipner platform.

During the night the wind slowed down and in the morning of June 2<sup>nd</sup> we started with a survey at Well 15/9-13 with the 38 kHz echosounder and a Video CTD transect along the southern part of the subbottom CO<sub>2</sub> reservoir. At the well site we found an actively degassing methane seep with bacterial mats. This survey was followed by a sampling program with sediment grab and multicorer. During the night a multibeam survey was started above the reservoir.

On June 3<sup>rd</sup> we deployed a satellite lander next to well 15/9-13 and performed E -> W transects with OFOS and video CTD in the north of the reservoir followed by sediment sampling along this transect. In the night the multibeam survey was extended towards Well 15/7-02 in the north and Well 15/9-11 in the north-west.

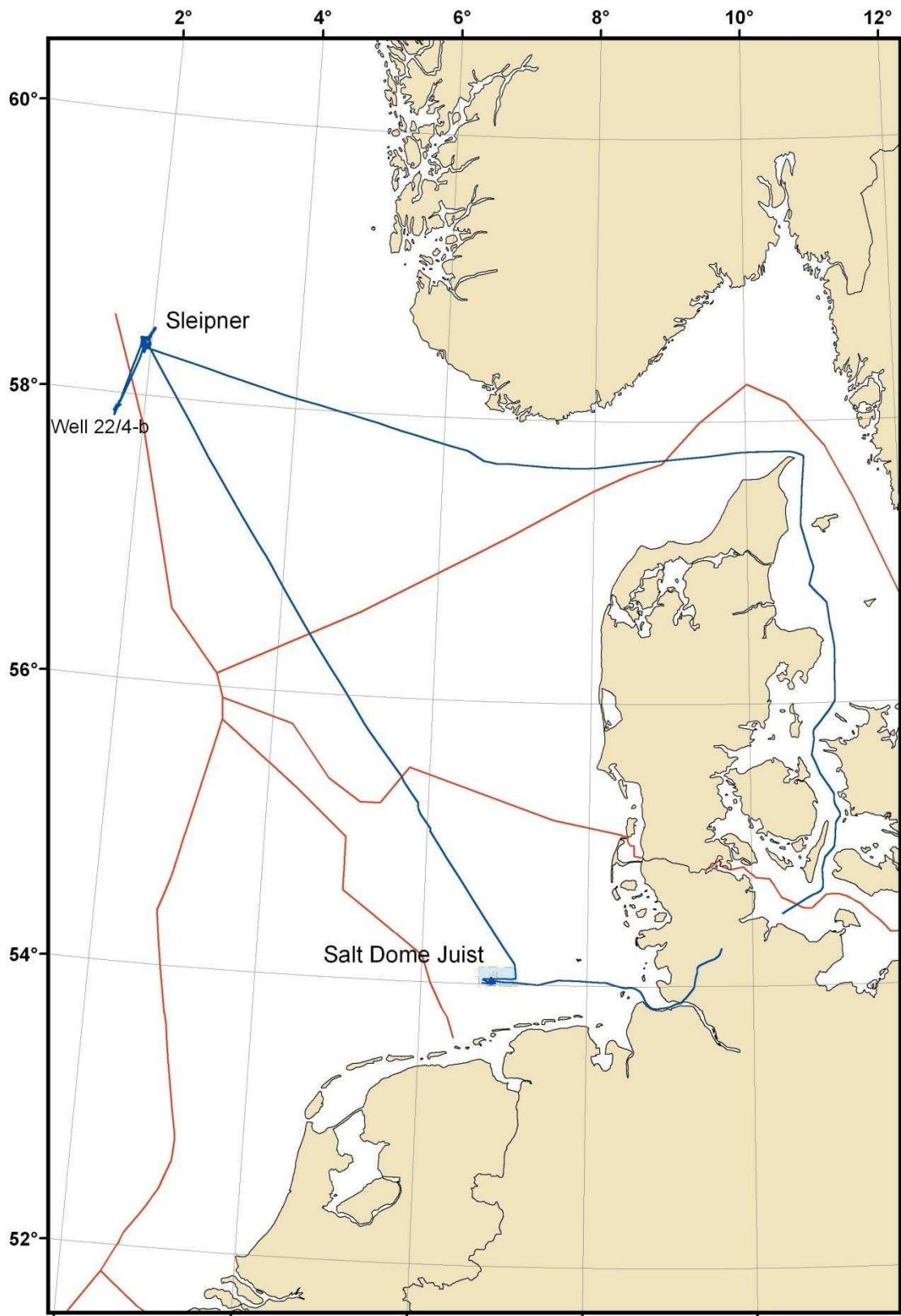
During the morning of June 4 the wind peaked up to Bft. 7 from the north, but we were able to deploy the Video CTD again and started a long profile from the south over the reservoir towards Well 15/7-02 in the north. Here, again we found a flare and elevated methane concentrations. In the evening we completed sediment sampling for pore water and fauna on the northern E -> W transect started on the previous day. This was followed by a multibeam survey at Well 15/9-16 in the west.

On June 5 we conducted a long Video CTD profile from Well 15/9-16 over Well 15/9-13 and crossing the central injection point towards the north. The abandoned Well 15/9-13 was passed 3 times and we saw bacterial mats and gas bubbles rising from the seafloor causing high methane concentrations in the water column. The sediments above the central injection point (approx. 1000 m below the sediment surface) were sampled for pore water and fauna.

On June 6 sediment sampling was performed on a control station in the west near Well 15/9-16 and deployed the BIGO-Lander near the central injection point. This was followed by sediment



sampling at the methane seep of Well 15/9-13 and the successful recovery of the satellite lander. After the recovery we headed towards the Blowout site at Well 22/4-b in the UK sector (Fig. 2) where we arrived at 19:00 and started to conduct a dense bathymetric grid.



**Fig. 2:** Cruise track and working areas Salt Dome Juist, Sleipner Vest, and Well 22/4-b (“Blowout”) of ALKOR cruise 374. EEZ borders of surrounding European countries are plotted as red lines.

In the morning we were crossed several times in close distance by fishing vessels which tried to force us away. After this decision was made that only one instead of two satellite landers shall be deployed. Until 18:00 we conducted an intense video-CTD transect in various depth layers above the crater to understand the impact of the gas emission on the physical oceanography. After this we deployed the satellite lander at a small terrace in the SW of the crater to obtain some protection against fishing activity. After the deployment RV ALKOR went on transit to Sleipner.

At Sleipner we retrieved the BIGO lander in the morning of June 8. After this we conducted a long profile from Well 15/9-11 in the NW over the central injection point to the SE. This was followed with a vertical pump CTD cast at the central injection point. Mapping the Sleipner area was completed by multibeam lines in the south of the rig. During the night the ship went on transit back to the blowout site.

Here, we conducted on the following two days an intense grid in 3 depth levels with the pumped CTD to resolve the gas flux and spreading of the flare in the water column. On the evening of June 10 we went on transit to Sleipner again to look for flares which we had seen during the previous multibeam survey in the south west of the rig.

On June 11, we started with the search for flares with the 38 kHz echosounder, but without success. Nevertheless, we deployed the video CTD and performed two transects along the south west of the rig between a pipeline south-west of Sleipner and Well 15/9-16. After retrieval of the CTD station work ended at 15:00 and we started the transit back to Kiel through the Skagerrak.

Due to the favorable weather conditions we arrived at Kiel already at 17:00 on June 13 and interrupted the cruise for an overnight stay at the pier of the west shore building. On the next morning, we made a short trip with journalists to Kiel Fjord and arrived at 10:00 on the pier at the sea fish market to unload the vessel, where cruise AL374 ended.

### 3. CRUISE PARTICIPANTS

|    | Name        | First name      | Function                     | Institute  |
|----|-------------|-----------------|------------------------------|------------|
| 1  | Linke       | Peter           | Chief scientist              | IFM-GEOMAR |
| 2  | Sommer      | Stefan          | MIMS, CTD                    | IFM-GEOMAR |
| 3  | Schmidt     | Mark            | MIMS, CTD                    | IFM-GEOMAR |
| 4  | Türk        | Matthias        | Lander engineer              | IFM-GEOMAR |
| 5  | Bodenbinder | Andrea          | O <sub>2</sub> measurements  | IFM-GEOMAR |
| 6  | Wefers      | Peggy           | CH <sub>4</sub> measurements | IFM-GEOMAR |
| 7  | Syre        | Stephanie Helga | Ecology                      | IFM-GEOMAR |
| 8  | Karstens    | Jens            | Multibeam                    | IFM-GEOMAR |
| 9  | Lichtschlag | Anna            | Microsensors                 | MPI-Bremen |
| 10 | Wigand      | Cäcilia         | Sensor calibration           | MPI-Bremen |
| 11 | Stiens      | Rafael          | MUC technician               | MPI-Bremen |



## 4. GEOPHYSICAL MEASUREMENTS

J. Karstens

### Equipment

Two different geophysical instruments, an Innomar SES-2000 Sub-Bottom-Profiler and an Elac Seabeam 1000 multibeam system, were used during the cruise. Both systems acquired data simultaneously. The travelling velocity of the vessel was between 4 and 6 knots.

#### *Elac SeaBeam 1000 multibeam*

For the bathymetric survey, the Elac SeaBeam 1000 multibeam system was installed in the moon pool of the vessel. The Seabeam 1000 operates with a swath of 126 beams perpendicular to the travelling direction, which are generated by two transducers. The system operates at a frequency of 180 kHz and with an opening angle of 150°. This yields a swath width of three to four times the water depth. To avoid gaps in the acquired bathymetric grid, it was necessary to have an overlap of 1/3 between each survey line. A motion sensor linked to the acquiring system delivered information about the ship's movement, such as pitch, roll and heave. Combined with information about the relative positions of the GPS-antennae, the motion sensor and the two transducers of the system can automatically correct for the ship's motion. The multibeam system had to be calibrated before usage to avoid imprecision due to small variations of the transducers orientation to a horizontal plane. The most important calibration is the roll-correction. The results of the calibration were correction angles of 2.06° STBD and 2.98° PORT for the Salt Dome Juist survey, and 1.95° STBD and 2.01° PORT for the Sleipner and Blowout surveys.

#### *Innomar SES-2000 sub-bottom profiler*

The Alkor has a permanently installed "Innomar SES-2000 medium" sub-bottom profiler. The system is only used by the scientific party. The sub-bottom profiler works with two frequencies. While the primary frequency is fixed to 100 KHz, the secondary can be adjusted between 3 and 15 kHz. The low frequency was changed during the survey to achieve an optimal image of the surveys targets; flares and shallow gas. A frequency of 5 kHz resulted in good imaging in the unprocessed data, and was therefore selected for ongoing acquisition. During the acquisition it is possible to change various processing parameters, such as the gain, stacking, and noise reduction filter. These changes only affected the acquisition monitor and did not have an influence on the acquired data. Only changes in the transmission energy and frequency had an impact on the raw data. To accomplish a high comparability within and between different sub-surveys, these parameters were not changed after calibration.

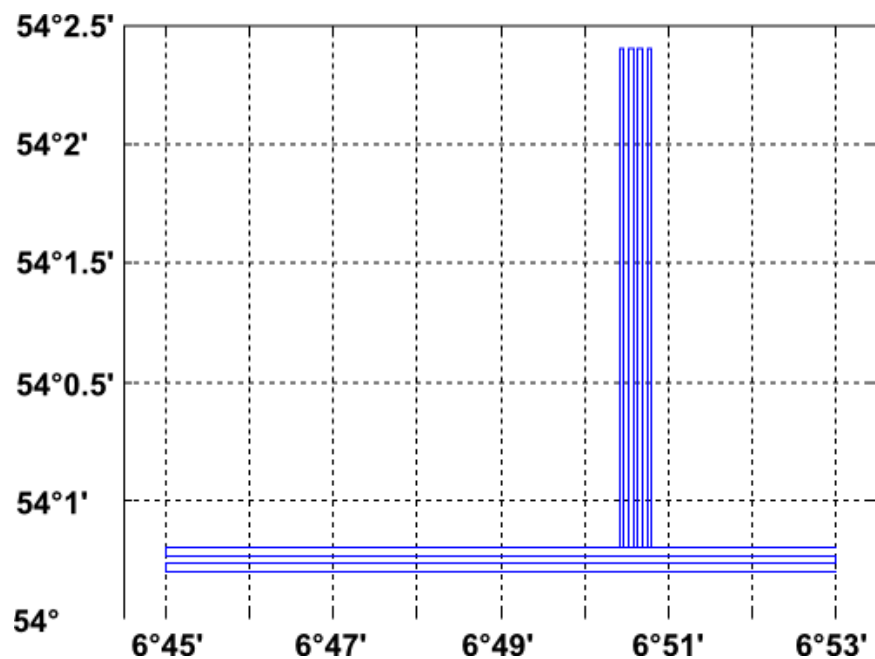
## Acquisition

The geophysical measurements were carried out during night time because no day light or crew involvement was needed. The acquisition had a duration of 8 days (Table 1).

*Table 1: Geophysical measurement schedule*

| Date       | Site            | Start of acquisition (UTC) | End of acquisition (UTC) |
|------------|-----------------|----------------------------|--------------------------|
| 30.05.2011 | Salt Dome Juist | 19:00                      | 7:00                     |
| 02.06.2011 | Sleipner        | 19:00                      | 7:00                     |
| 03.06.2011 | Sleipner        | 18:40                      | 05:10                    |
| 04.06.2011 | Sleipner        | 20:45                      | 23:45                    |
| 06.06.2011 | Blowout         | 17:50                      | 02:00                    |
| 08.06.2011 | Sleipner        | 18:00                      | 22:00                    |
| 09.06.2011 | Blowout         | 15:00                      | 18:00                    |

Acquisition maps of the three different working areas Salt Dome Juist, Sleipner, and Blowout can be seen in figures 3, 4, and 5, respectively. A List of the multibeam and echosounder profiles is given in appendix II.



*Fig. 3: Acquisition map at the Salt Dome Juist working area.*

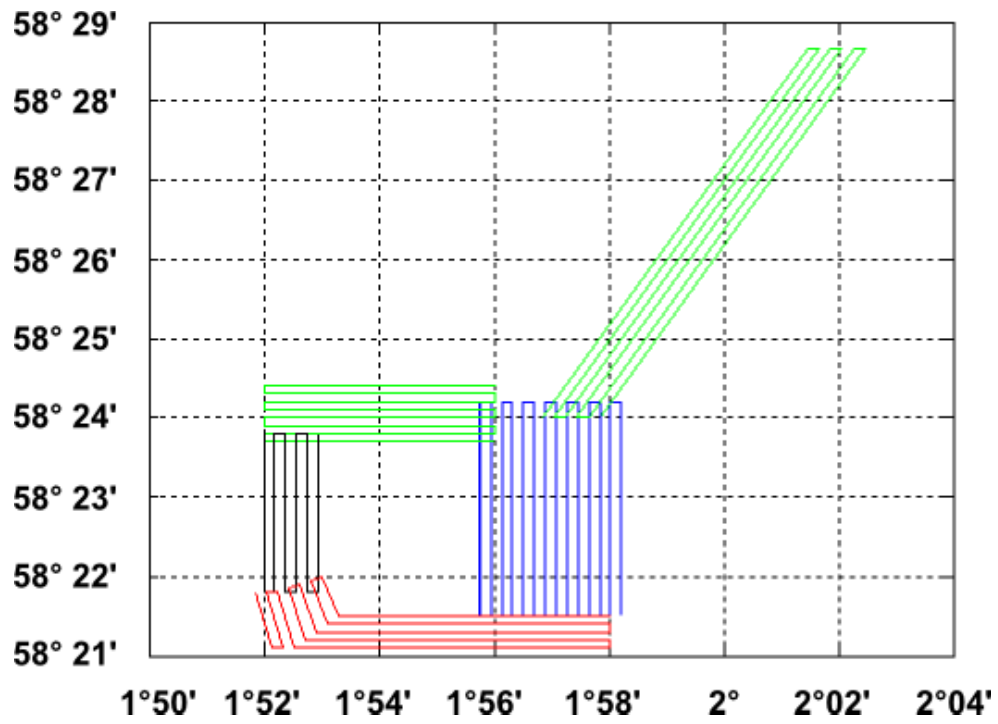


Fig. 4: Acquisition map at the Sleipner working area.

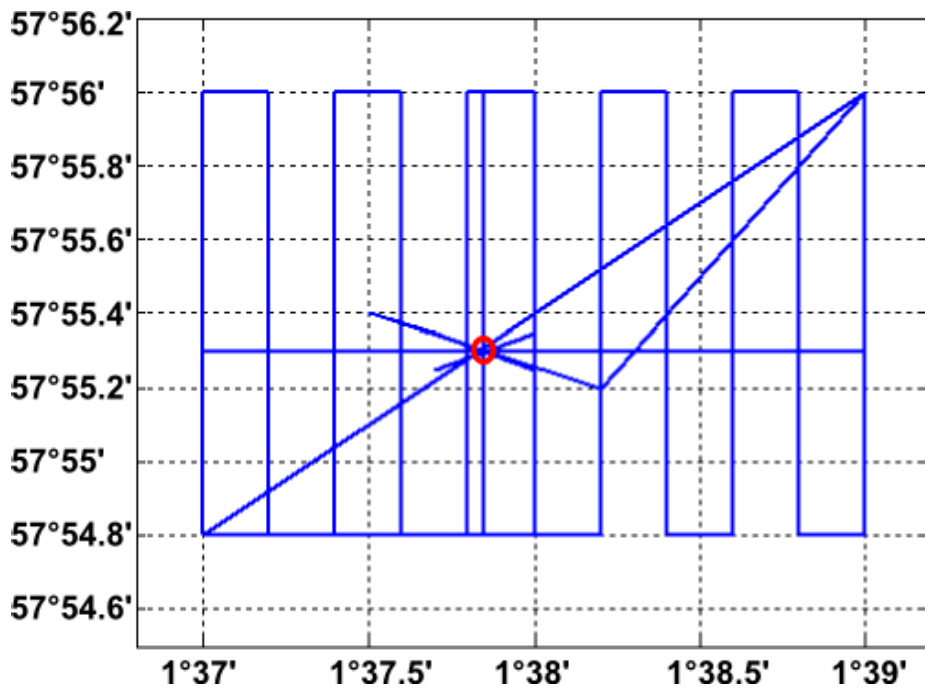


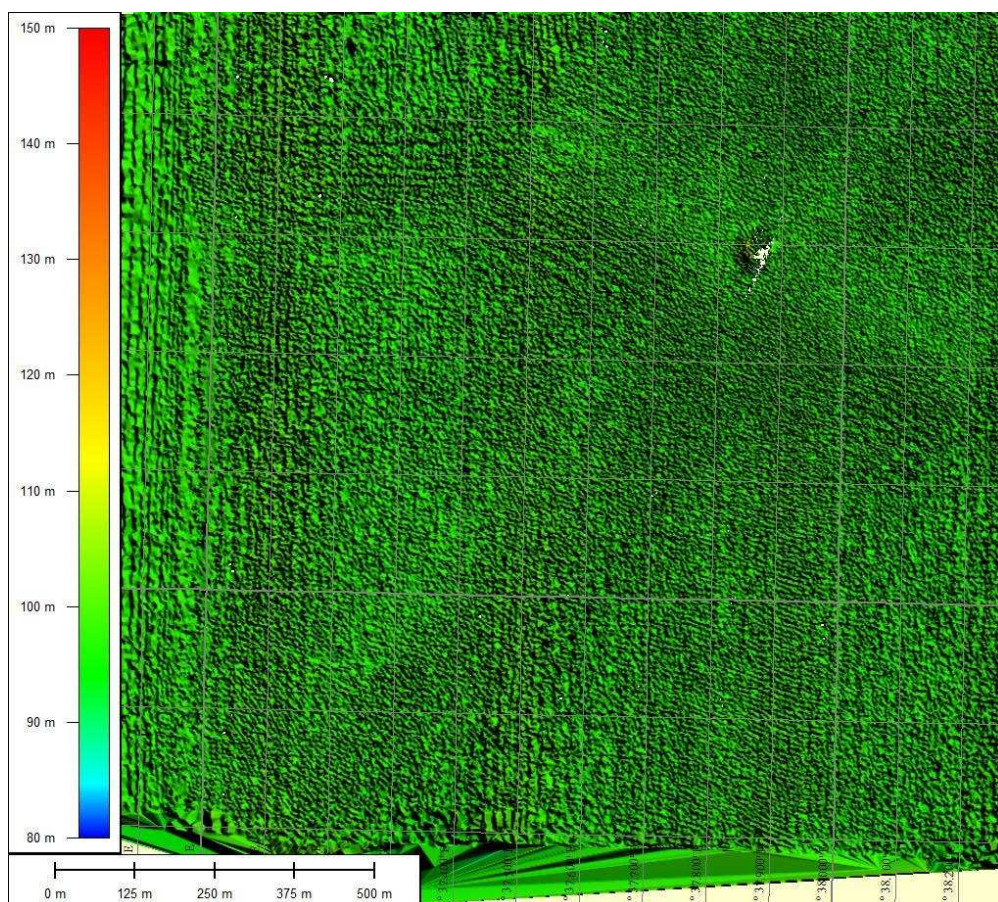
Fig. 5: Acquisition map at the Blowout site; red circle shows the location of the crater.

## First results

All processing will be done after the cruise, but first results of the raw data are shown in the following figures.

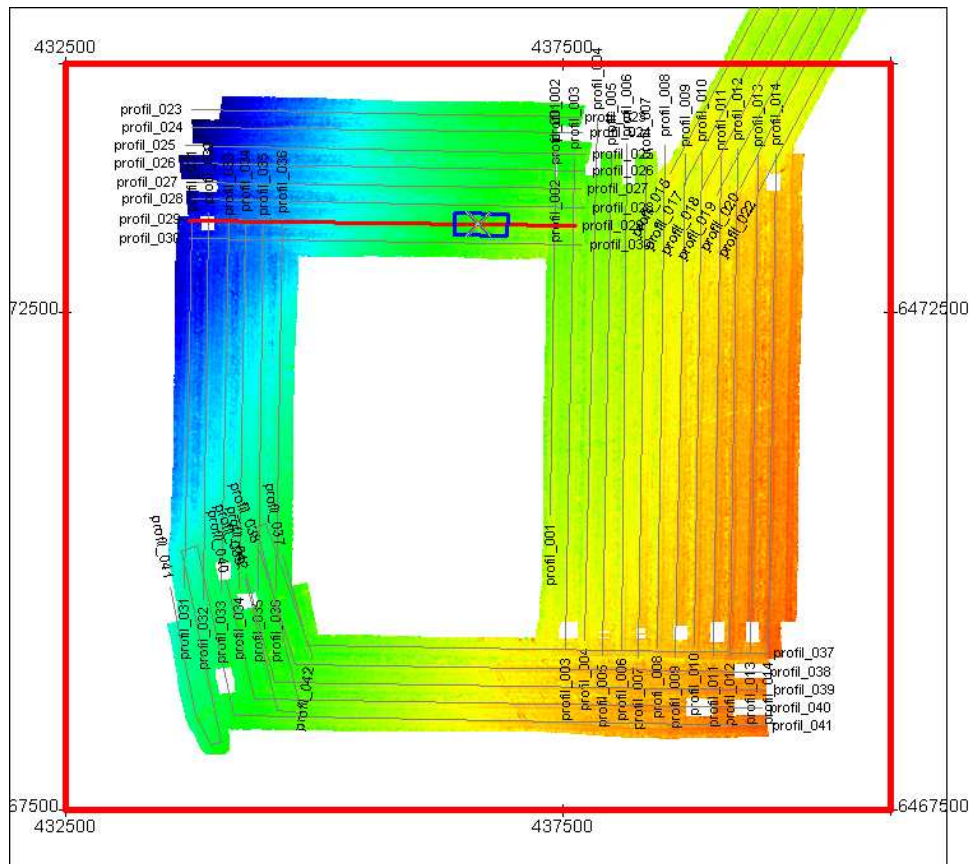
### *Multibeam*

Figure 6 shows a bathymetric map of the Blowout-site in the UK sector of the North Sea. The data are unprocessed and unfiltered, but already show a quite homogeneous water depth of 100 m. The blowout crater and a flare (white) can be seen in the upper right corner. The processing should deliver a smoother and more detailed map.

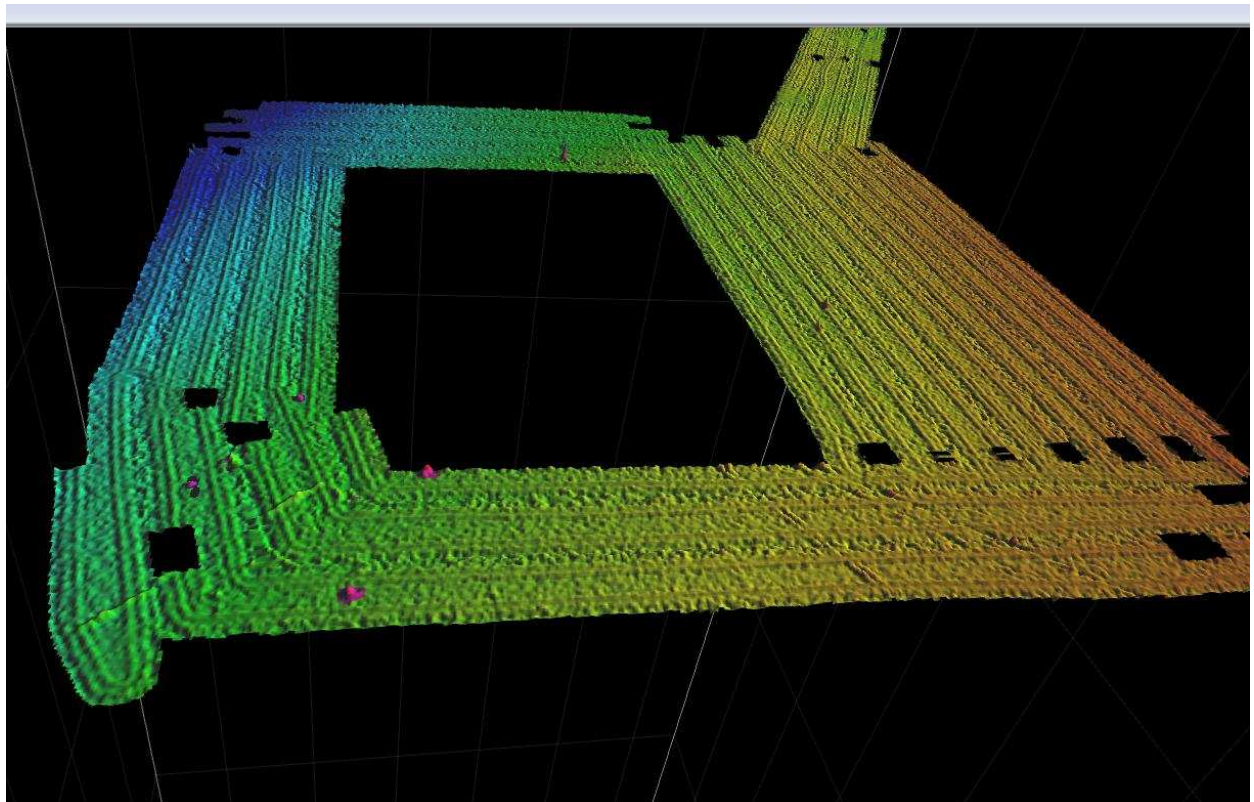


**Fig. 6:** Bathymetric map of the Blowout site (unfiltered and unprocessed data)

An overview of all multi beam survey lines recorded at Sleipner is given in figure 7. The seafloor near the offshore injection/production platform, located southwest of the actual subsurface injection point, had not been investigated as it is a restricted area for non-DP vessels (~700 m radius around the platform). The multi beam data were used to create a 3D map (Fig. 8) where acoustic reflections are indicated which are probably caused by rising gas bubbles.



**Fig. 7:** Over-view map showing all multi beam survey lines at Sleipner. The position of the sub-bottom profiler images is marked with a blue box.

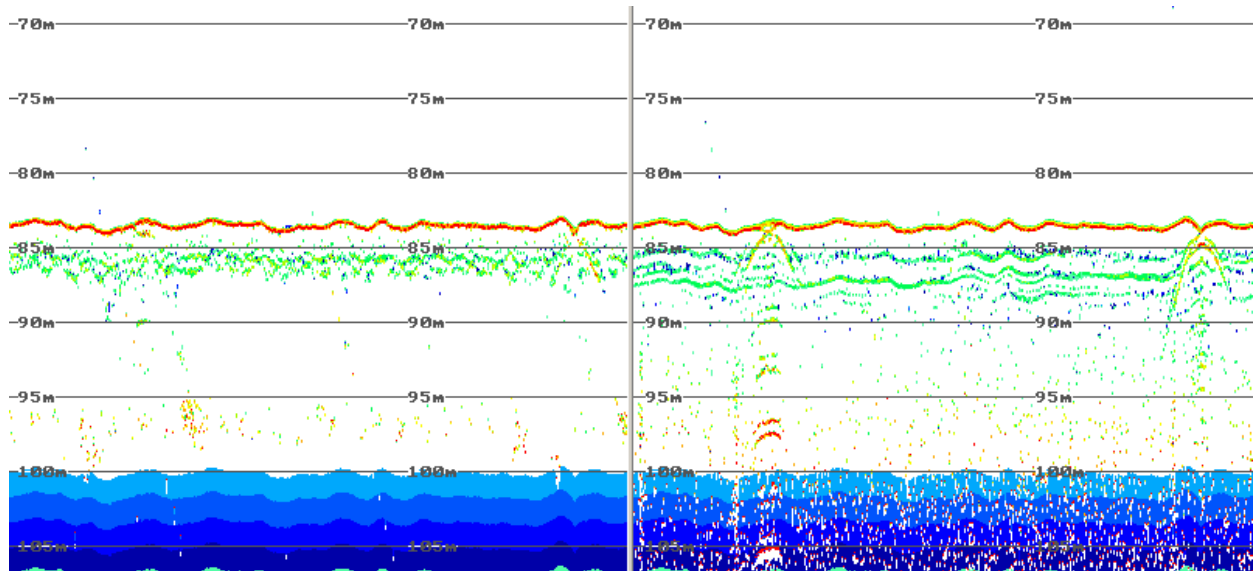


**Fig. 8:** 3D-map of the Sleipner survey area. The pink-marked peaks indicate acoustic reflections in the water column which are probably caused by rising gas bubbles.



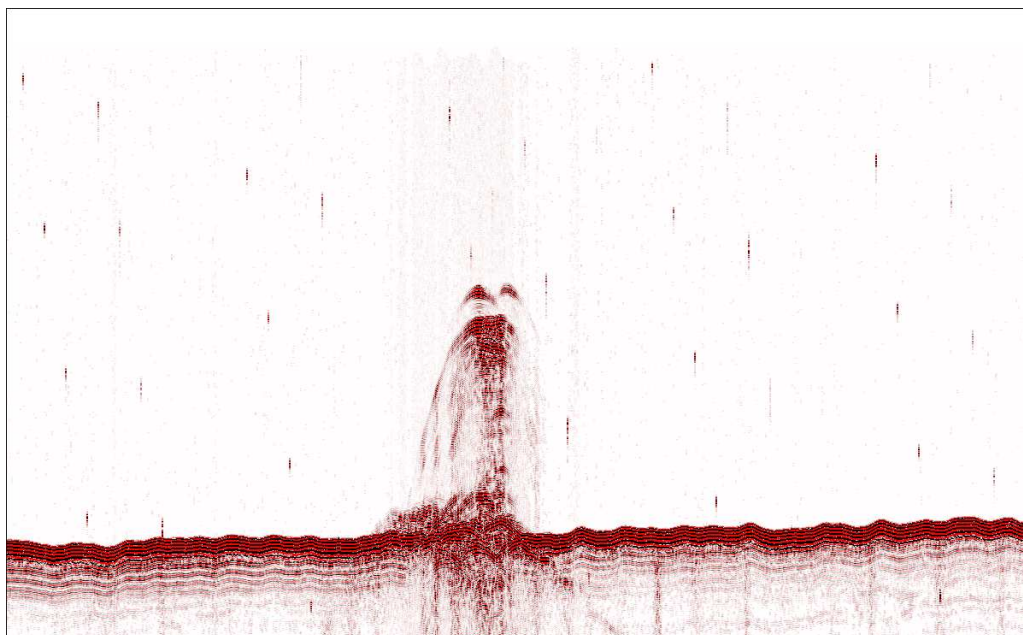
### *Sub-bottom profiler*

Figure 9 shows examples of raw data acquired by the sub-bottom profiler. The left half shows the low frequency record, and the right half the high frequency record. The wavy topography is a result of the ship's motion and will be suppressed by processing. The two diffraction hyperbolae are caused by pipelines. The vertical penetration and the signal to noise ratio will be improved by post-processing.



**Fig. 9:** *Unprocessed sub-bottom profiler data; 5 kHz (left) and 100 kHz (right) at Sleipner.*

The rising of gas bubbles from the abandoned well can be clearly seen in the record of the sub-bottom profiler (Fig. 10).



**Fig. 10:** *Image of the unprocessed sub-bottom profiler data with an acoustic flare at the abandoned well 15/9-D-1H; 5 kHz.*

## 5- WATER/GAS SAMPLING AND HYDROGRAPHIC MONITORING

M. Schmidt, S. Sommer, P. Linke, P. Wefers, A. Bodenbinder

### Sampling areas

#### *Salt Dome Juist*

Areas of gas (bubble) seepage were located in the Southern German North Sea during a pre-site mapping study in October 2008 (Alkor cruise AL328). Gas bubbles were observed in areas where strong acoustic flares, low pH and high concentrations of CO<sub>2</sub> were determined near the seafloor (McGinnis et al., 2011). The area, called “Salt Dome Juist”, is located in the Southern North Sea about 30 km offshore the East-Frisian Island Juist, Germany. Shallow seismic investigations indicate Quaternary sediment structures i.e. valleys and depressions which are probably filled with organic rich deposits (e.g. peats and lignites). Decomposition of the organic matter led to the accumulation of shallow gas (Streif, 2002). Furthermore, deep seismic exploration in this area has revealed a complex structure of salt diapirism, tectonic faults, bright spots, and several kilometres deep gas/fluid migration patterns reaching the seafloor in certain areas.

#### *Sleipner*

The Sleipner CO<sub>2</sub> storage site, which is located in the Southern Norwegian EEZ, has been in operation since 1996 by Statoil. More than 14 million m<sup>3</sup> of CO<sub>2</sub> have been injected into a saline aquifer (Utsira sand formation) at about ~900 m sediment depth. The spread of the so called “CO<sub>2</sub> plume” in the reservoir rock has been studied and monitored in detail by the operator using 3-D time-lapse seismic data. The outer dimension of the CO<sub>2</sub> plume is shown in the respective maps for time intervals between 1999 and 2008 (see “Sleipner” maps below). Statoil has observed a number of gas seeps at the seafloor located near (several 100 m to several 1000 m distances) the area of the stored CO<sub>2</sub> (Hegglund, 1997). However, no gas seepage was observed at the seafloor above the plume. Some of the seeps are associated with abandoned exploration wells. During Alkor 374 cruise we investigated whether any shallow gas (methane, higher hydrocarbons, CO<sub>2</sub>, nitrogen, argon) is expelled directly at or above the CO<sub>2</sub> plume and if the seepage activity of the known natural seeps is somehow related to the ongoing storage activity at the Sleipner site.

#### *Abandoned Well 22-4b (“Blowout”)*

In November 1990 a gas blowout was accidentally created in the central North Sea (~57°55'N, 01°38'E; British EEZ) by drilling activities of the British oil and gas company “Mobil North Ltd”.

Methane probably derived from penetrated shallow gas pockets is released into the North Sea since then and first attempts to quantify the amount of released methane released to the atmosphere were made in late 90<sup>th</sup> (Rehder et al, 1998). However, determining the total volume of bubble released at the seafloor, gas composition changes in gas bubbles during uplift, and dissolved gas distribution in the water column is still a challenge.

To study the lateral and vertical distribution of dissolved methane and other trace gases at the “Blowout” site several towed CTD tracks were conducted at selected water depths. The influence of stratified water column and tides were investigated.

## Methodology

### *“Multi-purpose” rosette*

The newly designed Water Sampler Rosette system (for technical details see below) was used to study dissolved gas concentrations at selected water depths between 10 to 120 m in the North Sea. The system was towed by winch 2 from the starboard site of RV Alkor and water depths were controlled by pressure readings of the attached Seabird CTD (SBE9plus). A digital video telemetry system (Sea & Sun, Trappenkamp - SST) providing real-time monitoring of the seafloor was used to control the distance to the seafloor in “bottom view” mode. The telemetry provides a bidirectional transmission of serial data (e.g. CTD or compass data) and video data with a resolution of 720 x 576 pixels at 25 color pictures per second via a standard coaxial cable with a length of up to 8000 m. The main video camera consists of a full HD camcorder which can be controlled via the telemetry (zoom, start/stop internal recording with a resolution of 2.3 Mpixel). By using the integrated Ethernet interface several IP cameras can be controlled and their video data transmitted in parallel. During AL374 an analog b/w camera (Rovtech) was used. Light is provided by 3 LED lights (Bowtech) which can be dimmed and adjusted to the required light conditions and turbidity. The telemetry provides power of up to 1.2 kW for external consumers. Due to the shallow water depth of this cruise, an external cable was attached to the winch cable (Fig. 11). Moreover, an in situ multi-phase pump was attached to the winch cable connecting an on board Membrane Inlet Mass Spectrometer (MIMS) with the rosette by a 1 inch plastic tube (the technique is fully described in chapter 6).



**Fig. 11:** Water sampler (12x10 L Niskin ) rosette including SBE9plus CTD, pH sensor (SBE27), and the HydroC/CH<sub>4</sub>/CO<sub>2</sub>/PAH sensor package with power pack. The orange cable attached to the winch cable is connected to the digital video telemetry system.

### *SBE9plus CTD*

The SBE 9plus underwater unit was equipped with 2 pressure sensors, 2 temperature sensors, 2 oxygen sensors and 2 conductivity sensors. The decks unit SBE11plus provided power supply and online data control. Data collection was performed with SEASAVE software (version 4.21). CTD data were recorded with 24 Hz. GPS position data was logged parallel to the CTD data from an external GPS device mounted near the CTD winch. 4 analogue channels at the SBE underwater unit were needed for external sensor reading (pH-, CO<sub>2</sub>-, CH<sub>4</sub>-, PAH-sensor), therefore, the bottom detector unit was disabled. The distance between CTD and the seafloor was controlled by video observation instead. Hydrocasts and hydrographic data from towed CTDs were processed by using SBE software SBE7.21d. Usually data files of 5 second bins were created from raw data files and exported to ASCII. 5s interval CTD data was then

combined with 5s interval data sets derived from Membrane Inlet Mass Spectrometry (MIMS). All data sets are correlated with their UTC time stamps.

#### *SBE27-pH/O.R.P. sensor*

The sensor (SBE27-0198) combines a pressure balanced glass-electrode, Ag/AgCl reference probe, and a platinum O.R.P. electrode (1200 m rated). The recent calibration equation provided by Seabird is used in the output data files. However, the sensor was also calibrated at IFM-GEOMAR in a T-controlled test tank by using AMPY/BIS seawater buffer solutions (<http://www.ifm-geomar.de/index.php?id=1909&L=1>). This calibration still has to be applied to the data.

#### *HydroC-CH<sub>4</sub>/CO<sub>2</sub>/PAH sensors*

The HydroC instrument package capable of measuring CO<sub>2</sub>, polyaromatic hydrocarbons, and methane in situ (Contros, Systems and Solutions, Germany), is mounted to the Video-CTD frame (Fig. 11). The sensor package is powered by an external NiMH-power unit (~10h/sensor at ~6°C water temperature). The sensors (CH<sub>4</sub>, CO<sub>2</sub>) store internal high resolution binary data, moreover, the sensors (PAH, CO<sub>2</sub>, CH<sub>4</sub>) are also connected to the SBE9plus unit by serial cable and analogue data signals (0-5 V) are recorded online during CTD stations. The sensors analogue data is stored in the SBE data file. To allow the sensors internal temperature to reach thermal stabilisation, the methane and CO<sub>2</sub> sensors were powered-up half an hour before the CTD tracks began. An overview of the Contros HydroC sensors and their features is shown in Table 2.

*Table 2: HydroC sensor specifications given by CONTROS.*

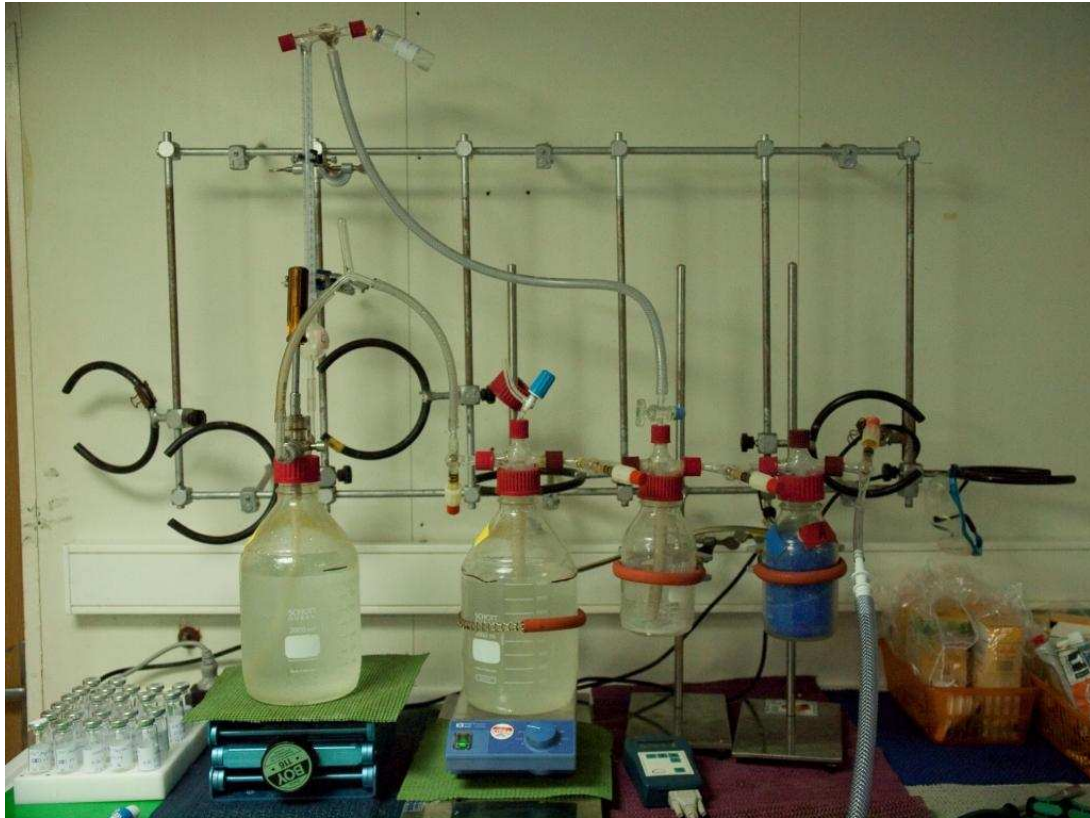
|                        | HydroC TM / CH <sub>4</sub> | HydroC TM / PAH | HydroC TM / CO <sub>2</sub> |
|------------------------|-----------------------------|-----------------|-----------------------------|
| Measuring range        | 200 nM – 50µM               | 0-500 ppm       | 200-1000 ppm                |
| Resolution             | 15-19 nM                    | 0.1 ppm         | 1 ppm                       |
| Response time<br>(t63) | 2 min                       | 0.5 s           | 1 min                       |
| Warm-up time           | ~ 30 min                    | Less than 10 s  | ~30 min                     |
| Operational depth      | 4000 m                      | 500 m           | 4000 m                      |

#### Water sampling

##### *Dissolved gas and DIC sampling*

Niskin water samplers were fired at selected depth and locations during CTD tracks and casts. Video observation and online sensor data (CH<sub>4</sub> and CO<sub>2</sub> data) were helpful to locate gas seepage locations and to decide where to fire the Niskin bottles. After CTD recovery, about 1.8 L of seawater was transferred from each Niskin bottle into pre-evacuated glass bottles

according to Keir et al., 2008. The extracted gas was then transferred in a vacuum extraction line (Fig. 12) into 20 ml headspace vials and stored gas tight with 3 ml of saturated sodium chloride solution. Methane concentrations were measured onboard by using a Trace ultra GC equipped with FID, RTX1-60m capillary column,  $\varnothing = 0.53$  mm,  $N_2$  carrier gas). Concentrations and stable isotope ratios of higher hydrocarbons, and permanent atmospheric gases will be measured at IFM-GEOMAR.



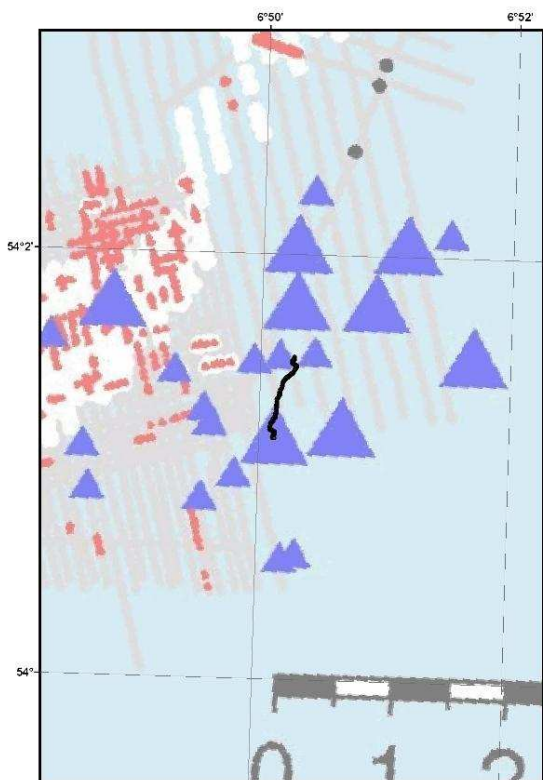
**Fig. 12:** Vacuum gas extraction line.

For dissolved inorganic carbon (DIC), and alkalinity titration seawater samples were transferred from Niskin bottles to 500 ml Schott glass bottles. The bottles were closed, after adding 100  $\mu$ l saturated  $HgCl_2$ -solution, with a greased glass stopper leaving a head space of about 3-5 ml. The DIC and alkalinity determinations will be conducted at IFM-GEOMAR laboratories.  $pCO_2$  calculations will be performed according to Dickson et al., 2007. Calculated  $pCO_2$  values will then be compared with calibrated HydroC- $CO_2$  sensor data, and MIMS  $pCO_2$  data. The station numbers, and further details for the sampled DIC and dissolved gas samples are listed in Appendix III.

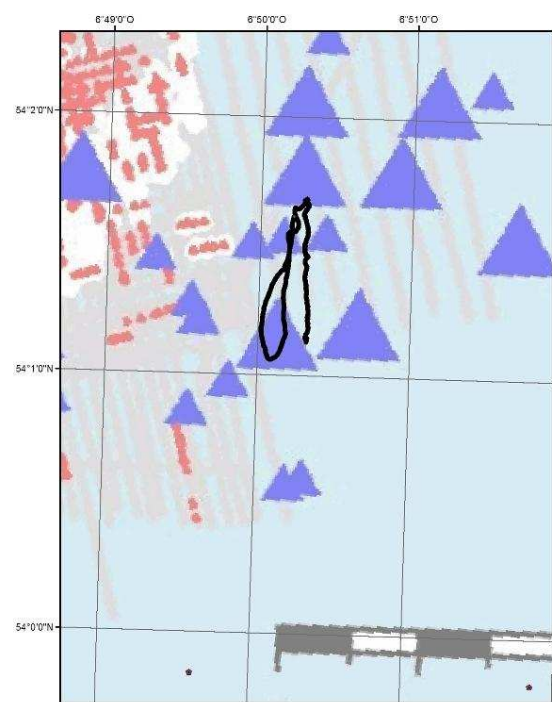
## Preliminary results

### *Salt Dome Juist*

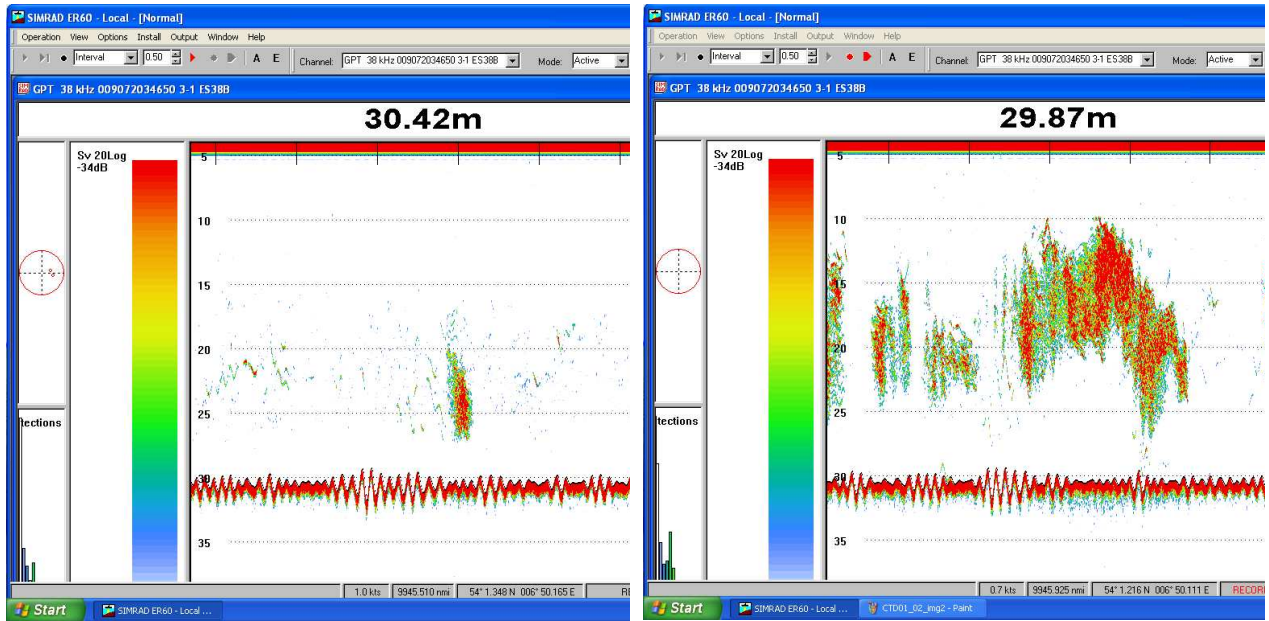
Towed CTD tracks at Salt Dome Juist (Stations CTD01 and -03) were performed on the 30<sup>th</sup> of May, 2011 at a water depth of about 29 m (Fig. 13, and 14). Gas bubbles emanating from the seafloor were observed early in the morning during the first part of CTD01-2. Gas flares in the water column (Fig. 15) could be imaged at the same time by using the ships own Simrad 38 kHz echosounder. Note that no flares were recorded after 6 am on the 30<sup>th</sup> for the next 24 hours in the working area "Salt Dome Juist". The CO<sub>2</sub>-concentrations determined by the Contros HydroC sensor during the near-seafloor tracks (at about 29 mbsl) are constant at about 335 ppm (Fig. 16). However, the CO<sub>2</sub>-concentrations changed from 335 to 345 ppm during slack water (Fig. 17; CTD03 track). Methane concentrations in Niskin water samples, determined by gas chromatography, ranged between 1.6 and 2.4 nM. No CH<sub>4</sub> concentration changes were measured by HydroC-CH<sub>4</sub> in the Salt Dome Juist area (detection limit ~200 nM). The CTD02 hydrocast was conducted to get sound velocity depth profiles for precise Multibeam data calibration. A well-mixed water column with salinity values of about ~33.196 PSU and slightly elevated temperatures near the sea surface is indicated for the Salt Dome Juist area (Fig. 18).



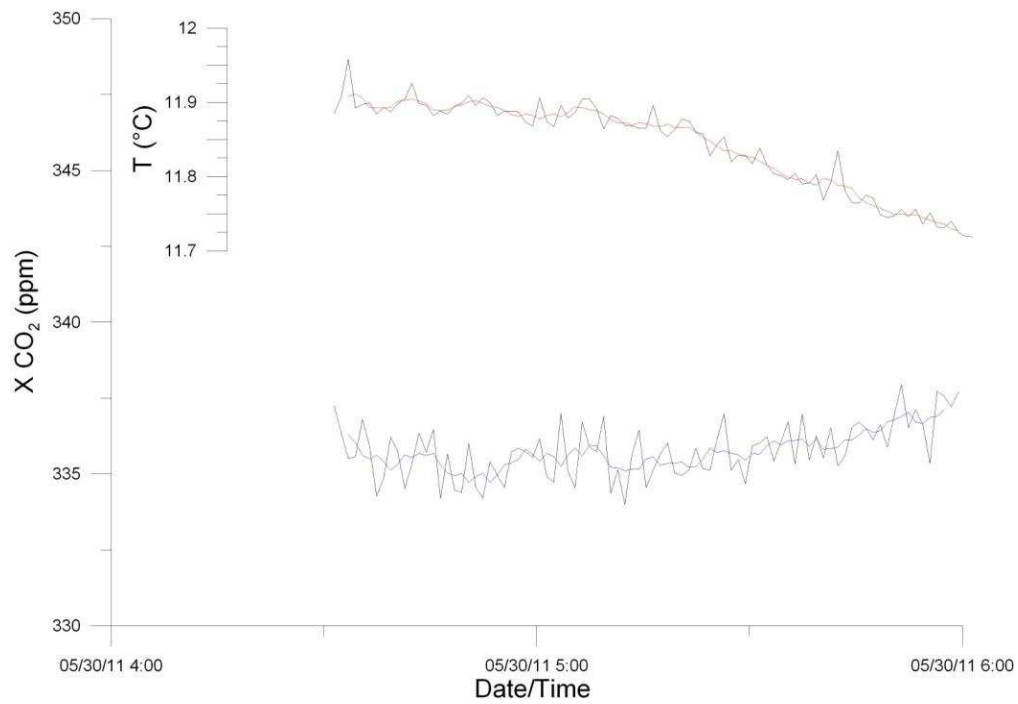
**Fig.13:** CTD01-2 track (black line) in the Salt Dome Juist area. Blue triangles mark gas flare locations imaged during Heincke 295 cruise by using the ships 38kHz echosounder.



**Fig.14:** CTD03 track (black line) at Salt Dome Juist.

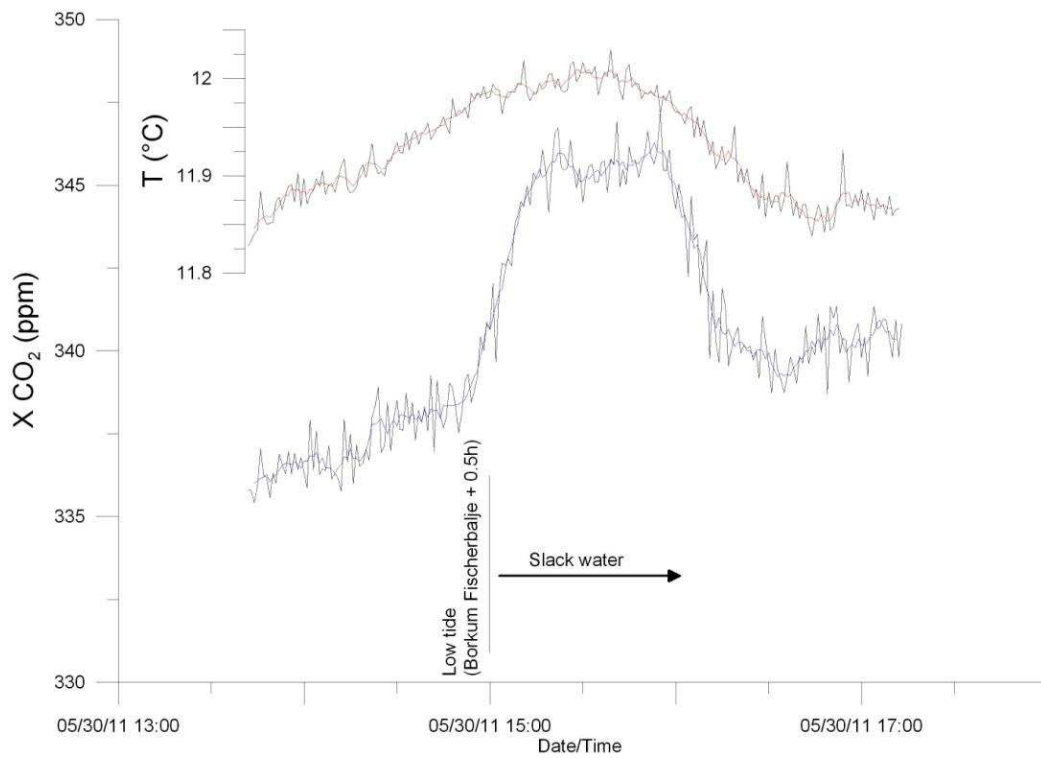


**Fig. 15:** Gas flares recorded with the 38 kHz echosounder during Alkor 375 cruise at Salt Dome Juiat (CTD01-2).

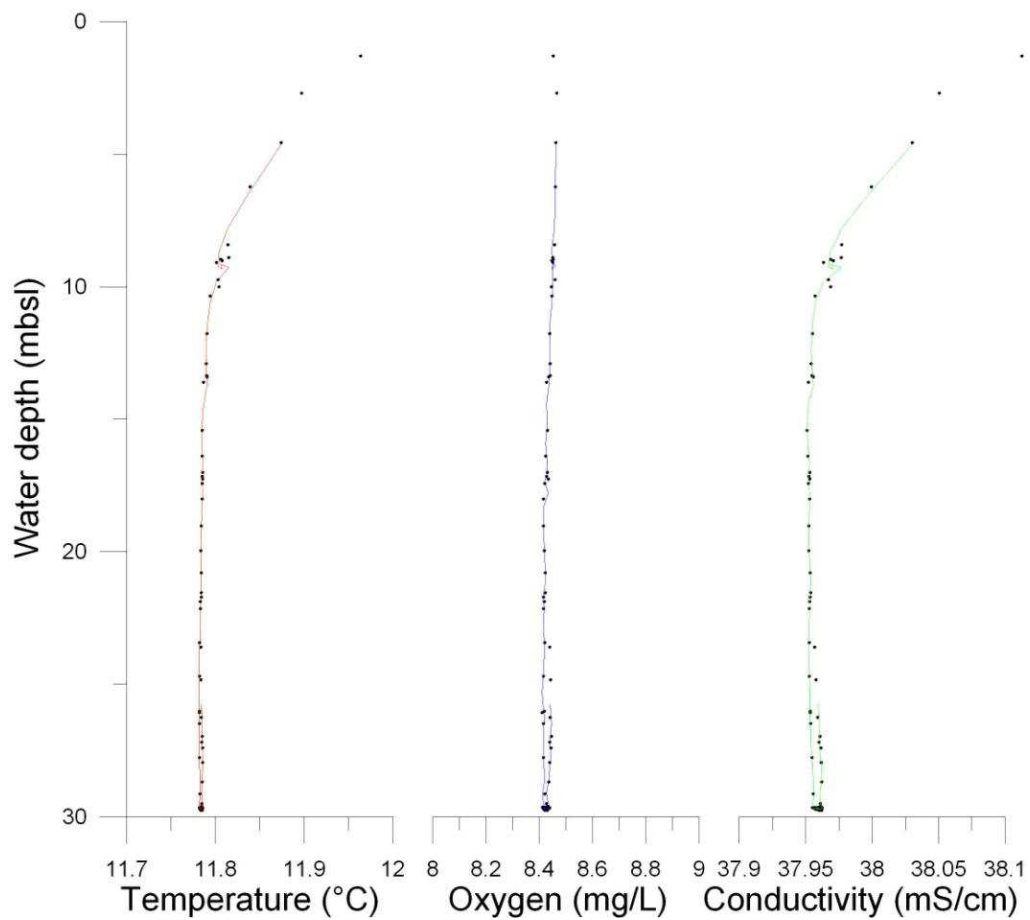


**Fig. 16:** CO<sub>2</sub> concentrations measured by HydroC-CO<sub>2</sub> sensor during CTD01-2 track at about 29 mbsl (bottom view mode).





**Fig. 17:** Temperature and CO<sub>2</sub> concentration change during CTD03-track at 29 mbsl (slack water time is indicated).



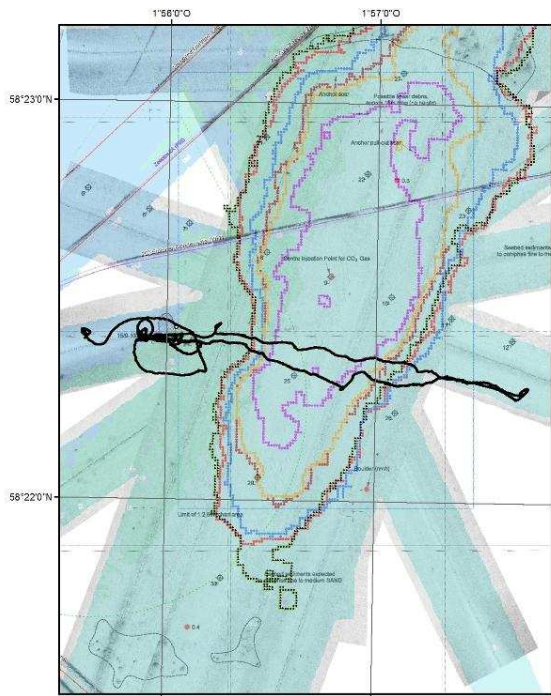
**Fig. 18:** Hydrographic data of the water column recorded at the Salt Dome Juist area (CTD02).

### *Sleipner Vest*

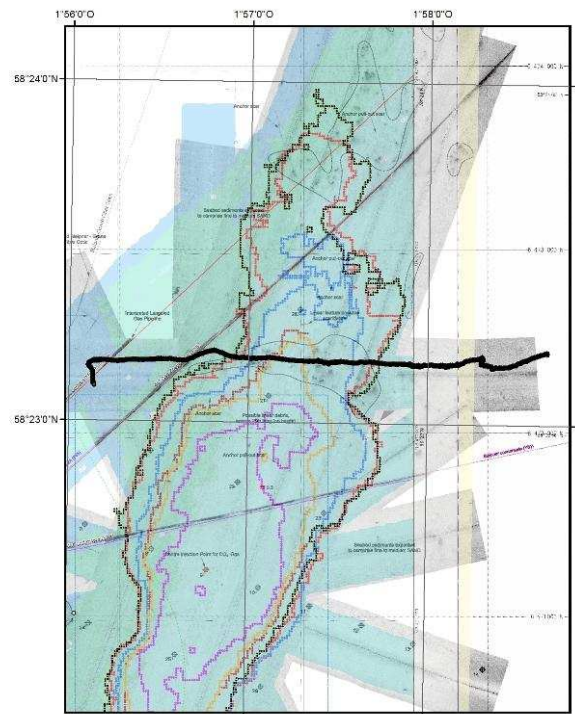
Six CTD tracks were conducted at the Sleipner CO<sub>2</sub> storage site (figures 19 to 25). The maps had been provided by Statoil. The CTD tracks followed the general strategy of crossing the actual CO<sub>2</sub>-plume boundaries and the abandoned wells nearby. An exceptionally long CTD track, heading SW to NE (Fig. 22) was performed to get sufficient background data offsite the CO<sub>2</sub> storage site but along the extension of the Utsira formation. The seafloor near the offshore injection/production platform (Fig. 19), located southwest of the actual subsurface injection point, had not been investigated as it is a restricted area for non-DP vessels (~700 m radius around the platform).



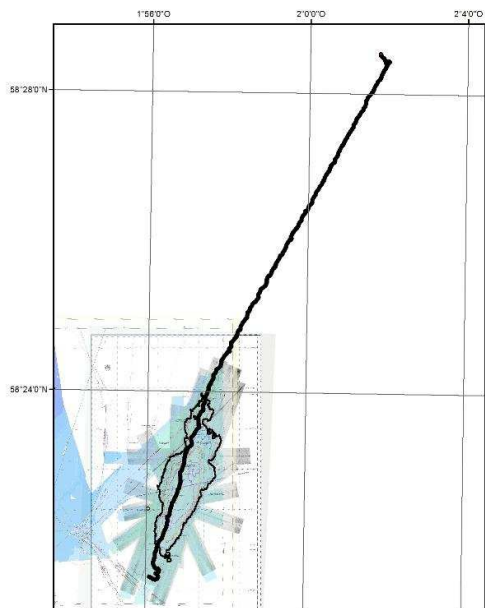
**Fig. 19:** CO<sub>2</sub> injection/CH<sub>4</sub> production platforms located at the Sleipner Vest gas field.



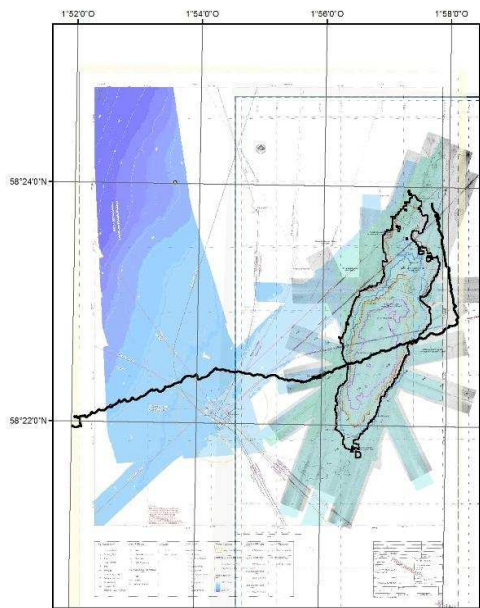
**Fig. 20:** CTD04 track (black line). The base map presents seafloor morphological features and the extensions of the CO<sub>2</sub> plume in the subsurface (coloured polylines).



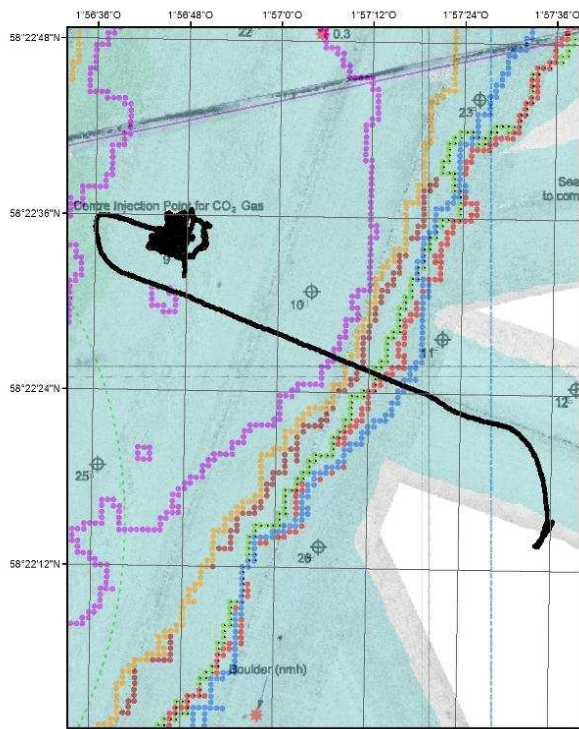
**Fig. 21:** CTD05 track.



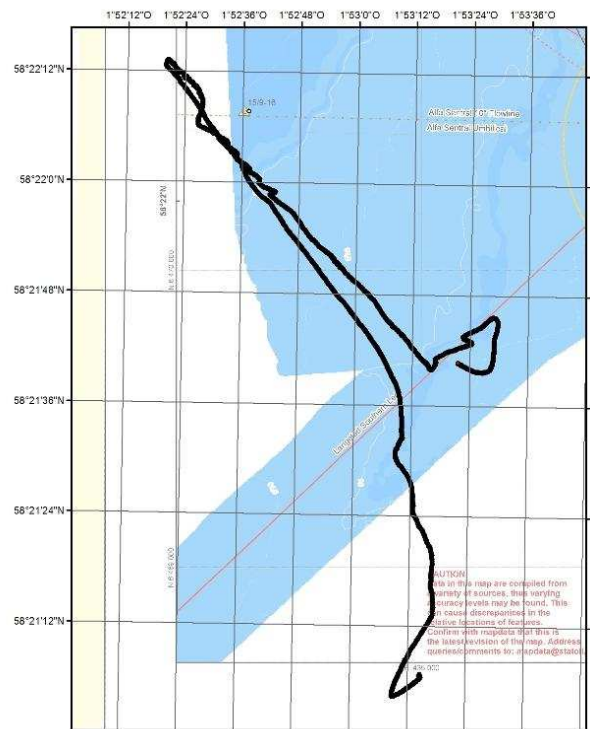
**Fig. 22:** CTD06 track.



**Fig. 23:** CTD07 track.

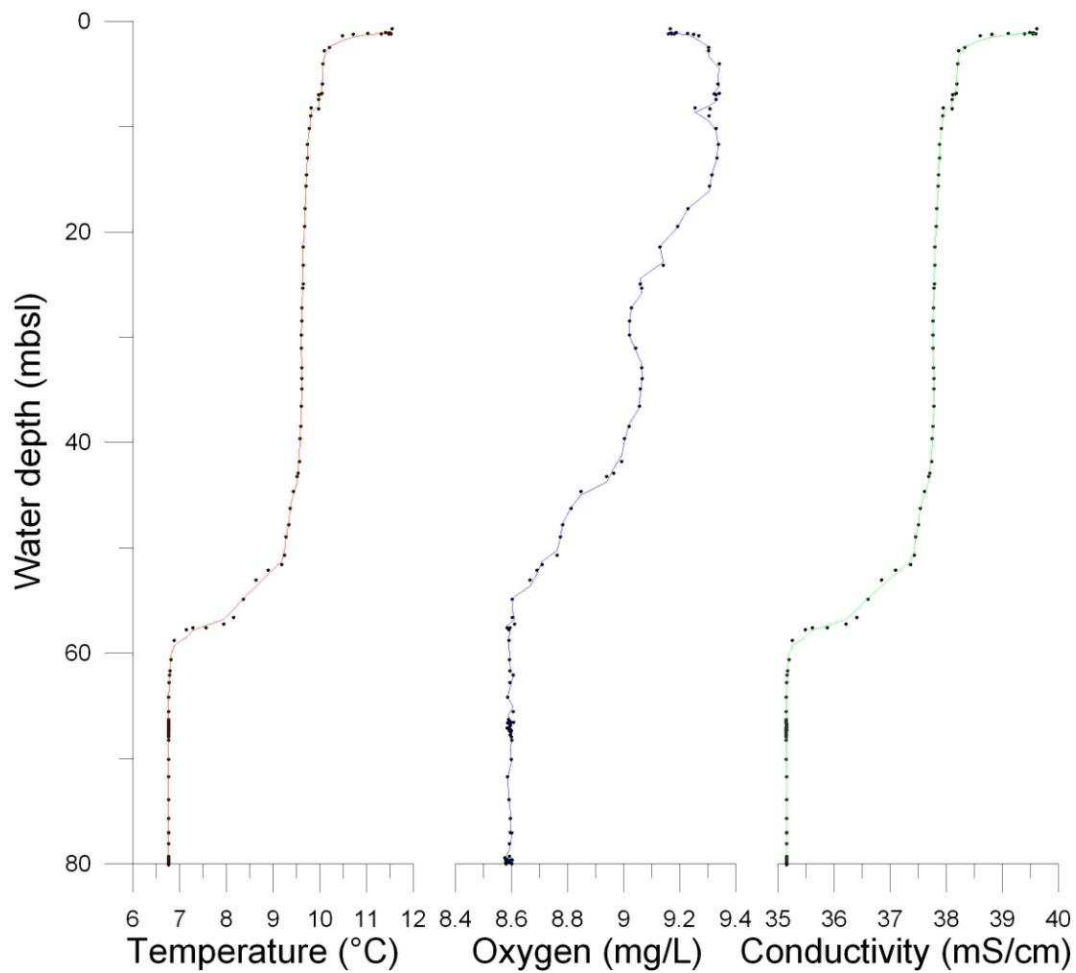


**Fig. 24:** CTD09 track.



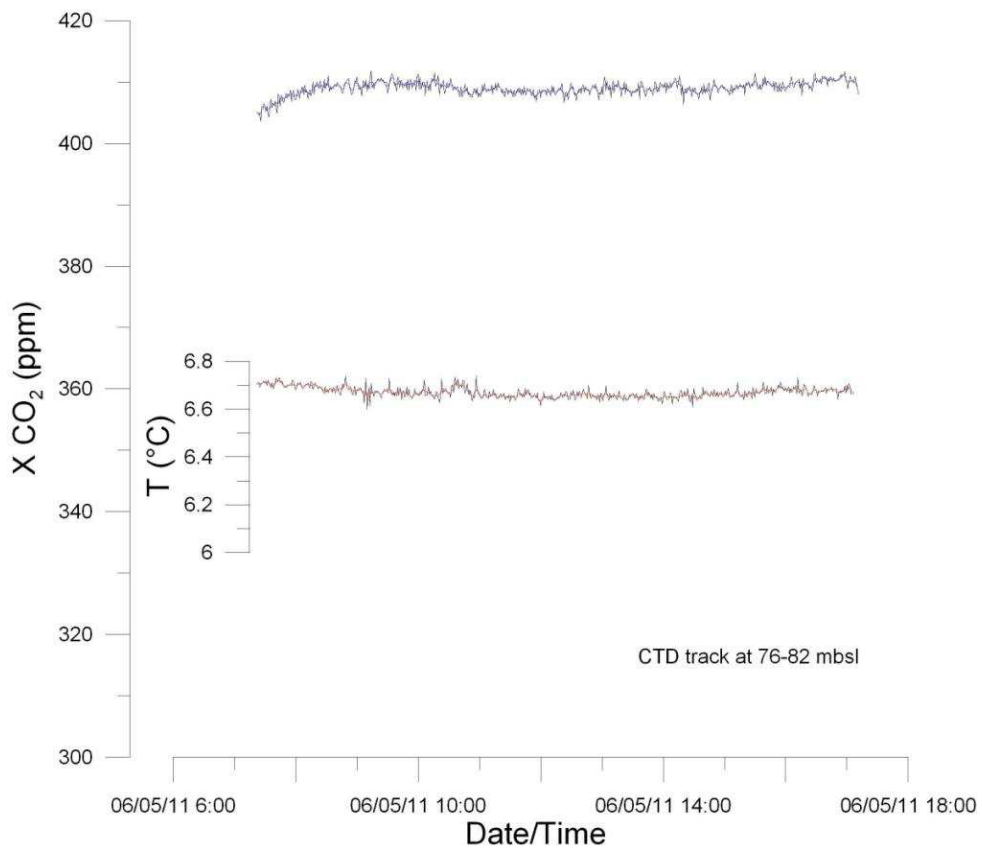
**Fig. 25:** CTD13 track.

In general the North Sea water column at Sleipner is stratified during June showing a thermocline at water depths between 50 and 60 mbsl (Fig. 26). The water temperatures in the area changed from 11.5 (sea surface) to 6.75°C at 80 mbsl. The bottom water (60-80 mbsl) shows salinities of about 35.06 PSU and oxygen contents of about 8.6 mg/L. Salinities of about 35.04 PSU, and oxygen content variations between 8.8 and 9.3 mg/L were measured above the thermocline (Fig. 26).

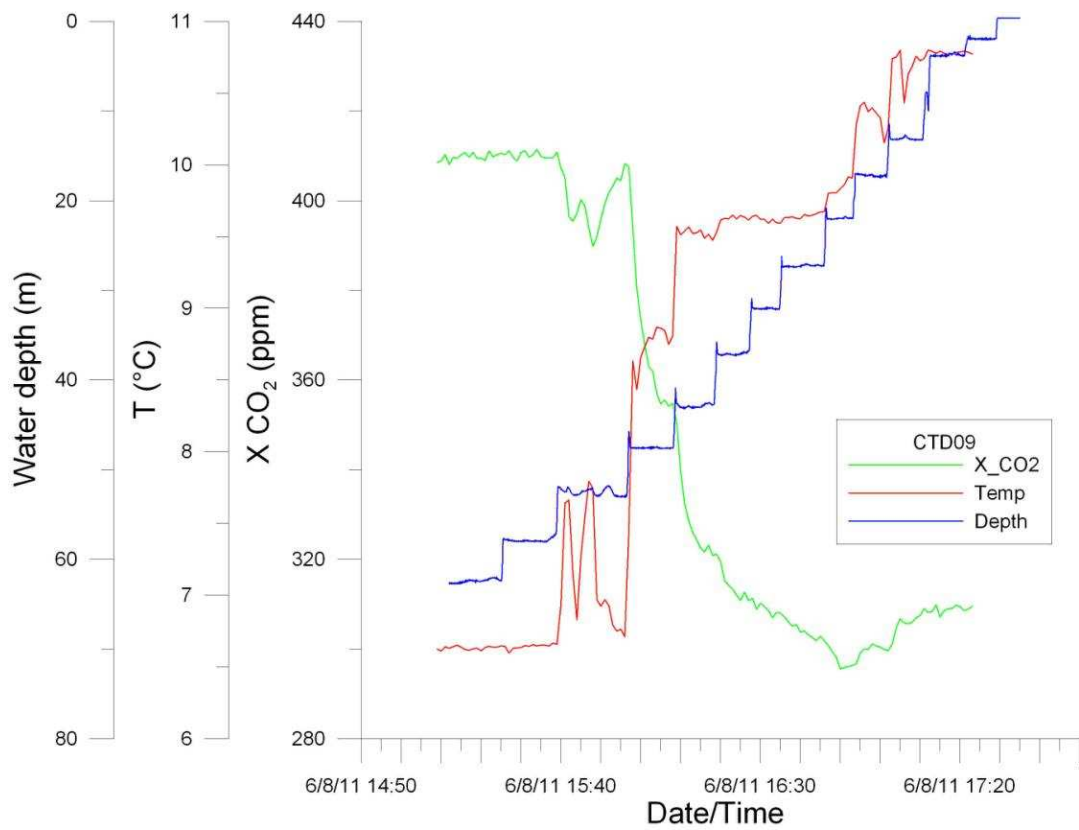


**Fig. 26:** Water temperature, oxygen content, and conductivity profiles at 58.3851°N and 21.9356°E (CTD05).

CO<sub>2</sub> concentrations of about 410 ppm (e.g. Fig. 27) were measured by the HydroC-CO<sub>2</sub> sensor in water masses below the thermocline (~60-80 mbsl). The CO<sub>2</sub>-concentration changes to less than 320 ppm above the thermocline (Fig. 28). About 310 ppm CO<sub>2</sub> was measured near the sea surface. This pattern is in general accordance to Thomas et al. 2004, and probably indicates CO<sub>2</sub>-consumption by photosynthesis above the thermocline during summer and CO<sub>2</sub> production by respiration below.



**Fig. 27:** CO<sub>2</sub> concentrations determined by HydroC-CO<sub>2</sub> sensor during station CTD09.



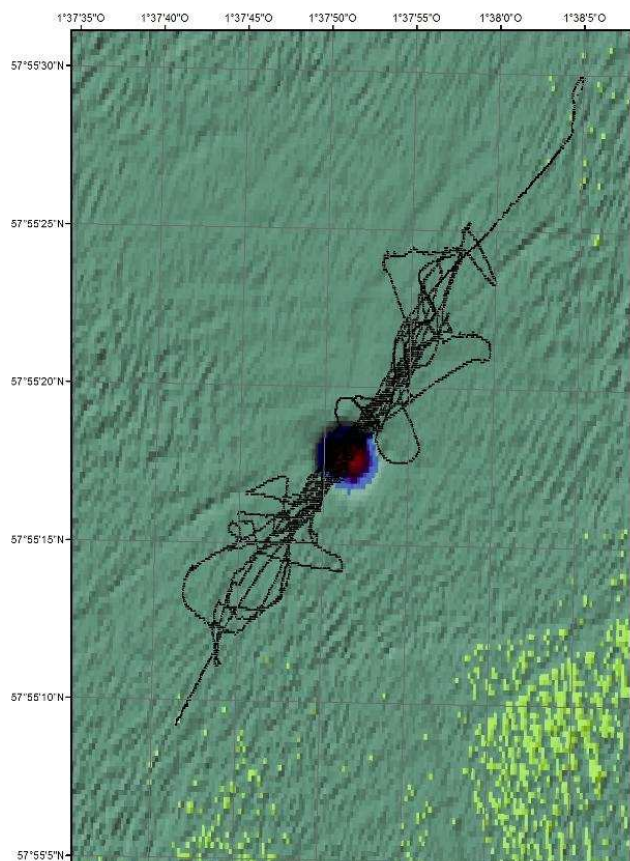
**Fig. 28:** Stepwise CTD uplift (CTD09) indicates CO<sub>2</sub> concentration changes in the stratified water column of the northern North Sea (during summer).

*Abandoned Well 22/4-b (“Blowout”)*

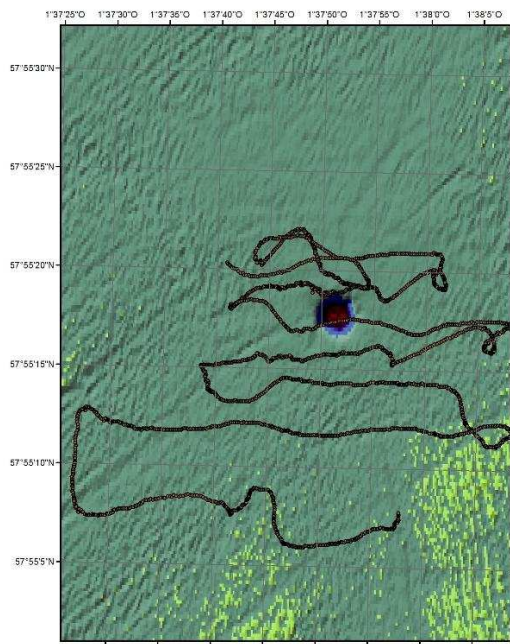
Five CTD tracks (Figs. 30-34) were conducted at the Blowout site (well 22/4-b, UK EEZ) to monitor dissolved gas concentrations in the surrounding of the main bubble stream emanating from the seafloor at about 57°55'18"N and 1°37'52"E. Gas bubbles reaching the sea surface were observed during each station at variable places (Fig. 29). Plume dimensions and headings, monitored by 38 kHz echosounder, changed with tides and currents (e.g. Fig. 35).



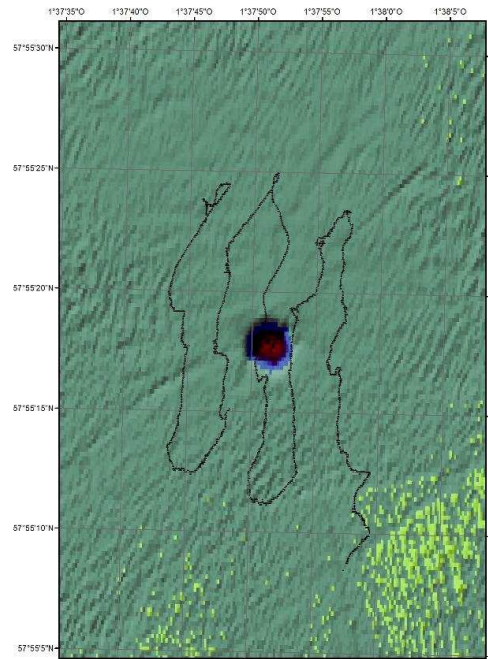
**Fig. 29:** Gas bubbles observed at the sea surface above the Blowout site.



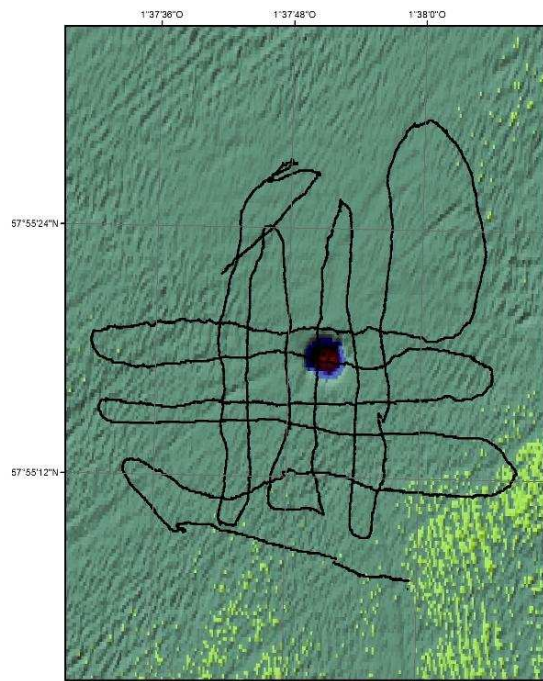
**Fig. 30:** CTD08 track crossing the “Blowout” site (bathymetric map was provided by J. Schneider v. Deimling).



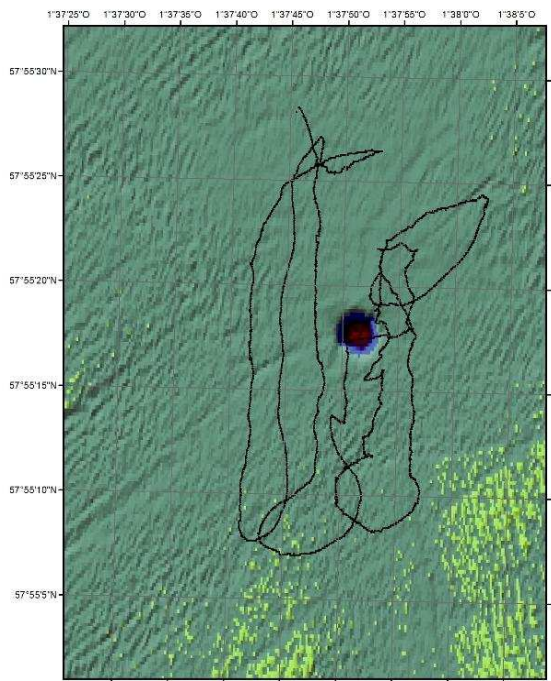
**Fig. 31:** CTD10-1 track



**Fig. 32:** CTD10-2 track.

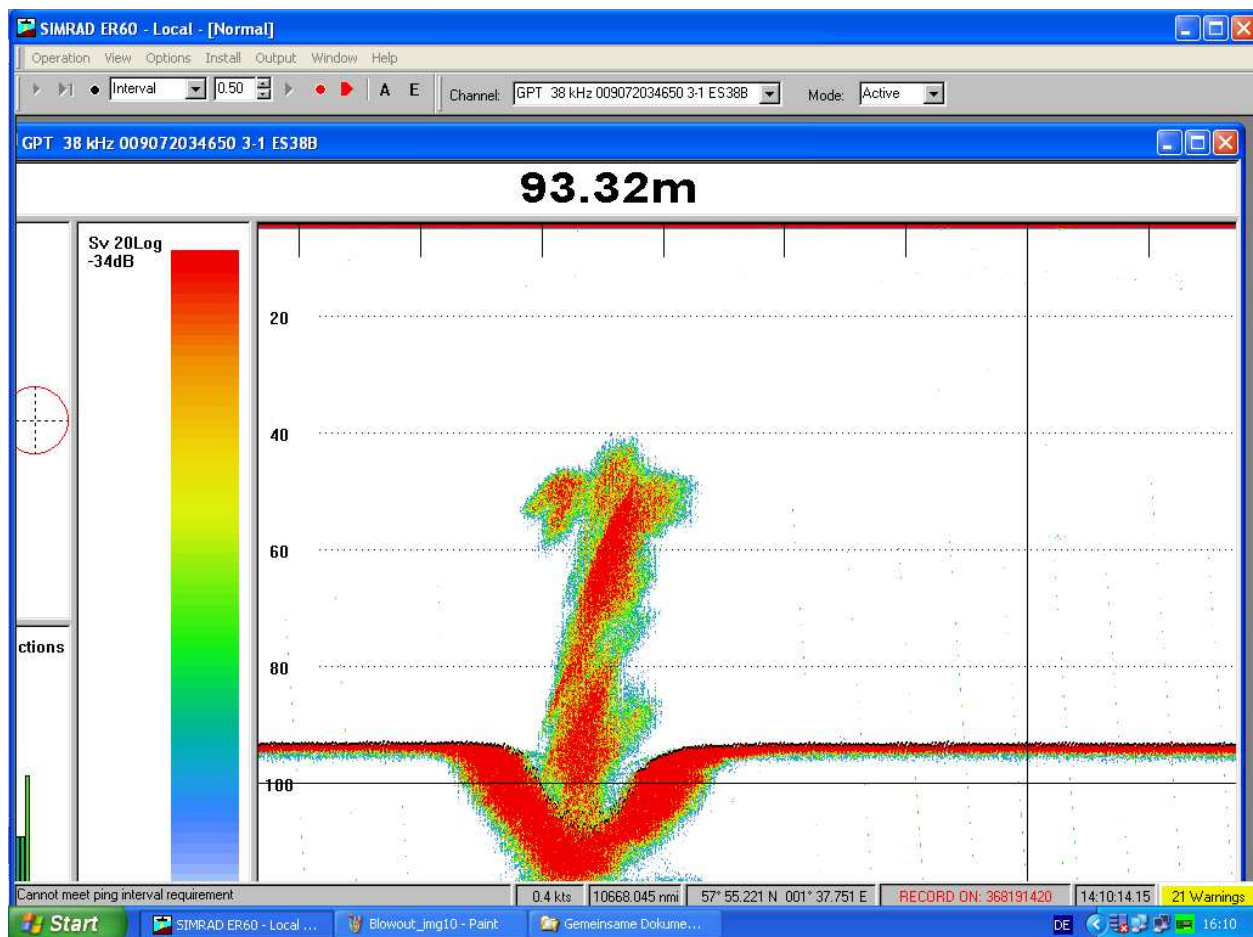


**Fig. 33:** CTD11-1/2 track.



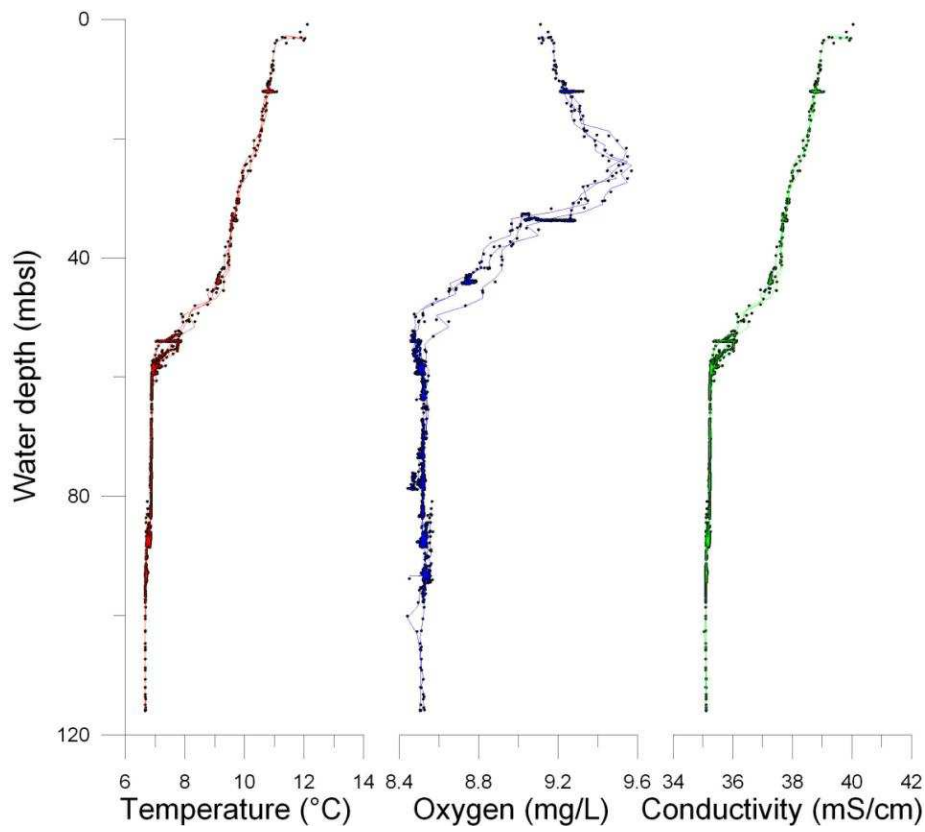
**Fig. 34:** CTD12



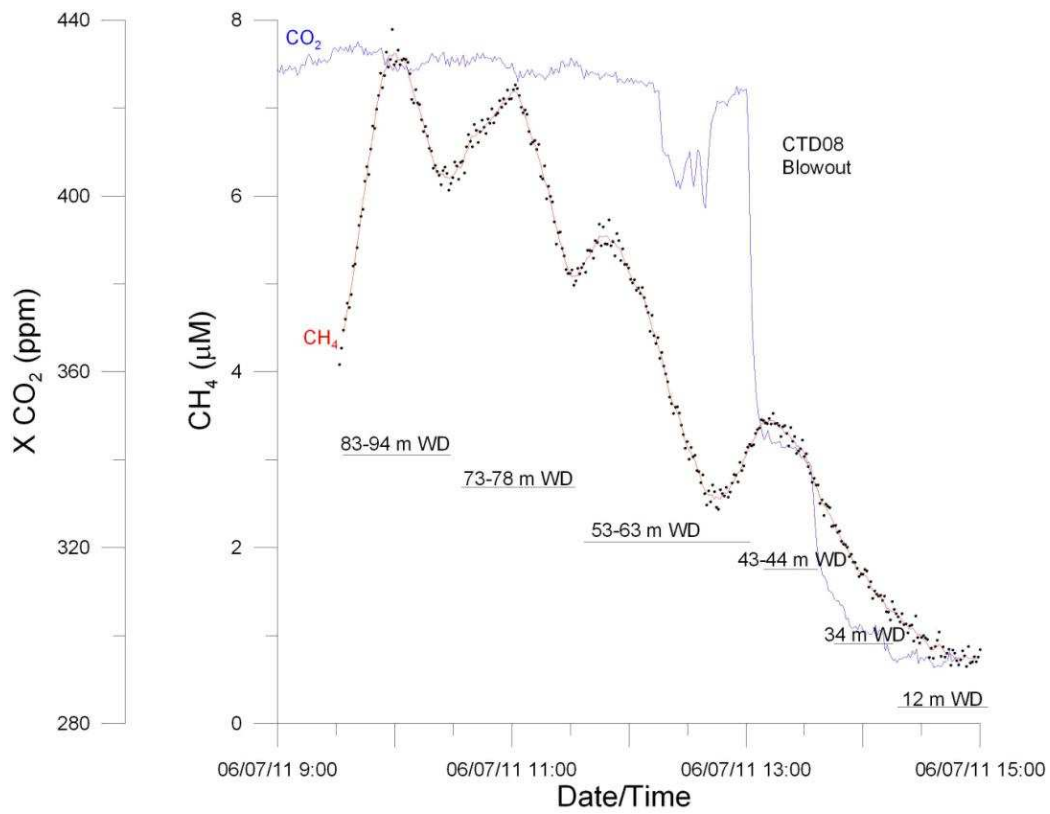


**Fig. 35:** Bubble plume recorded with 38 kHz echosounder during slack water time at the “Blowout” site.

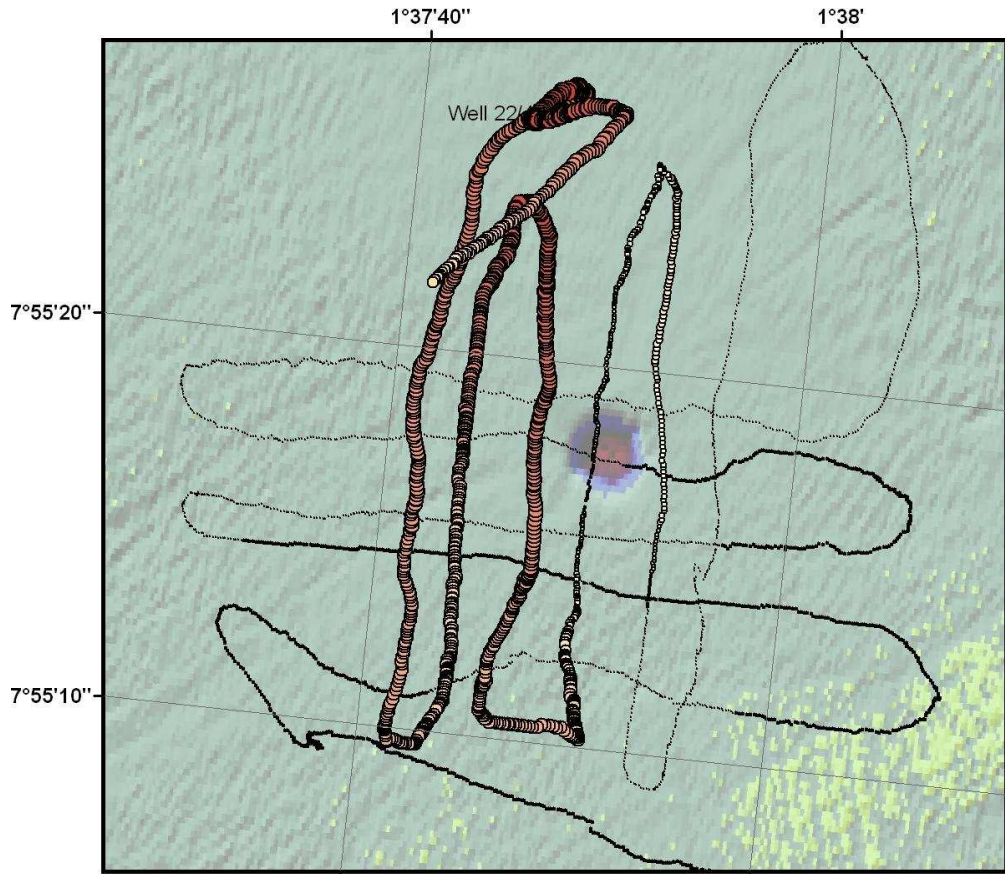
The water body at “Blowout” site is stratified by a thermocline between 40 and 55 mbsl (Fig. 36). The salinity changes from 34.94 PSU (surface waters) to 36.07 PSU (below the thermocline). The oxygen content varies between 8.4 and 9.6 mg/L, showing a maximum at about 25 mbsl (photic zone). Highest methane (5-8  $\mu\text{M}$ ) and  $\text{CO}_2$  (~430 ppm) concentrations were measured below the thermocline between 50 and 90 mbsl (Fig. 36). Dissolved gas concentrations (i.e. methane) decrease with increasing water depth, with methane concentrations which are below the detection limit of the HydroC-CH<sub>4</sub> sensor at 12 mbsl. The measured  $\text{CO}_2$  concentration (HydroC-CO<sub>2</sub>) varies between 290 and 430 ppm which is in accordance to the normal background  $\text{CO}_2$  known for the Northern North Sea during summer (Thomas et al., 2004).



**Fig. 36:** Selected CTD data show a stratified water body at the “Blowout” site (station CTD08).



**Fig. 37:** HydroC-CO<sub>2</sub>/CH<sub>4</sub> measurement at the Blowout site.



**Fig. 38:** Methane concentration distribution profile (CTD11)

The lateral dimensions of the methane plume are demonstrated by figure 38. Whereas the bubble plume diameter observed at the sea surface does not exceed more than 20 m in diameter, the plume of dissolved methane at a water depth of about 60 mbsl (measured by using the HydroC-CH<sub>4</sub> sensor) covers an area which is more than 400 times bigger.

Methane concentrations determined by vacuum extraction of discrete Niskin water samples range between background data of ~ 2-3 nM, and 0.9 μM CH<sub>4</sub> (CTD12), 4.7 μM (CTD11), and one exceptionally high value of ~16 μM (CTD11). All extracted gases will be measured in detail by continuous flow isotope mass spectrometry and GC-HCD at IFM-GEOMAR. The dissolved gas concentrations, CTD data, and ADCP data will be used to determine dissolved gas fluxes and transport processes from the seafloor to the stratified water at this site.

## 6. CONTINUOUS AND SIMULTANEOUS GAS MEASUREMENTS

S. Sommer, M. Schmidt, P. Linke, A. Bodenbinder

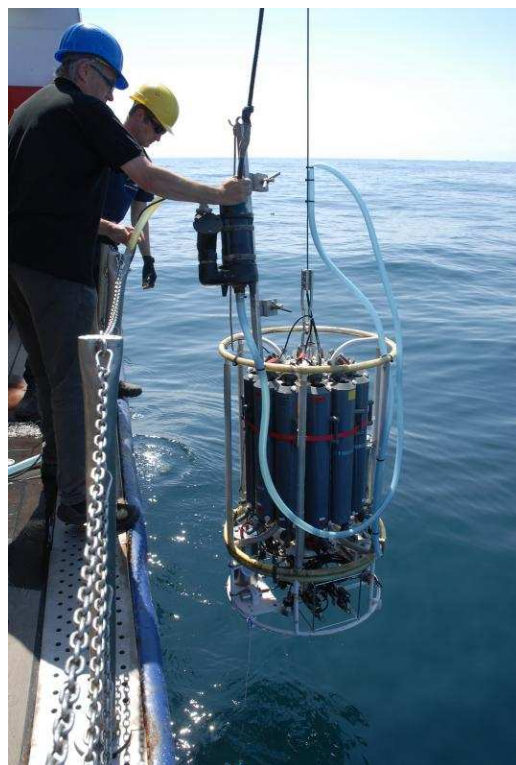
### Sampling areas

Bottom water gas measurements using the MIMS were predominantly conducted along several transects at the Sleipner CO<sub>2</sub> storage site in the Norwegian EEZ (CTD 4, 5, 6, 7, 9, 13) but also in the Saltdome Juist area (CTD 3) and at a blow out structure (Well 22-4b) in the central North Sea (CTD 10, 11, 12). These sampling areas have been described in detail in section 5.

### Methods

#### *Ex situ gas measurements using MIMS*

For continuous and simultaneous dissolved gas measurements of pCO<sub>2</sub>, CH<sub>4</sub>, N<sub>2</sub>, Ar, O<sub>2</sub> in the bottom water a towed video-equipped CTD water sampling rosette was deployed that was connected to a MIMS (Fig. 39). Distance to the seafloor was visually controlled online using a video system. The towing speed of this CTD system ranged between 0.5 – 0.8 kts.



**Fig. 39:** Left: Set up of the pump CTD connected via a tube to the MIMS in the laboratory (right).

For the ex situ gas measurements bottom water was continuously pumped to the laboratory through a tube (i.d.: 2.5 cm) and analyzed using a membrane inlet mass spectrometer (GAM 200, InProcessInstruments). The inlet of the tube was mounted on the CTD frame at the height of the in situ CO<sub>2</sub> and CH<sub>4</sub> sensors described in section 5. An underwater pump yielding a flow rate of 31.88 L min<sup>-1</sup> was clamped onto the CTD wire at a water depth of about 10-15 m. The tube on deck and throughout its way to the laboratory was insulated and wrapped into rescue

cover sheets to prevent warming of the water. In the laboratory continuous sub-sampling took place from the tube using a steel capillary that was connected to the membrane inlet. The distance between the sub-sampling port and the inlet was about 100 cm. Along this distance this capillary was permanently cooled to in situ temperature (11°C at Juist area, 6.7° at the Sleipner Area, 6.8 °C at the blow out) using a silicone tubing that was mounted aside the steel capillary. This arrangement was enclosed by insulation and again wrapped into a rescue cover sheet. Inside the silicone tube there was a permanent water flow at a defined temperature that was maintained using a Julabo thermostat. To enable best possible temperature stability of the inlet itself it was kept in a water bath using a Dewar vessel that was placed in a refrigerator. Between sampling of the bottom water and its arrival at the inlet where the actual gas extraction took place there was a delay time of up to 2.1 min (water depth 83 m). Sub-sampling from the tube and water flow through the inlet took place at a constant flow rate of 3.5 ml min<sup>-1</sup> using a pulse-reduced peristaltic pump (Ismatec). The design of the glass membrane inlet followed that of G. Lavik (Max Planck Institute for Marine Microbiology, Bremen). Within the glass inlet the water was sucked through a permeable silicone tube (length 40 mm, i.d. 1.4 mm). Flow of extracted gas from the inlet to the mass spectrometer was supported with Helium that was supplied through a fused silica capillary (i.d. 100 µm). An inline cryo-trap (– 35°C ethanol) between the inlet and the mass spectrometer was used to minimize water vapor. Concentration of CO<sub>2</sub>, CH<sub>4</sub>, N<sub>2</sub>, and Ar were obtained from ion currents at the mass to charge ratios 44, 15, 28 and 40 respectively. A Secondary Electron Multiplier was used as a detector.

Ion currents of CO<sub>2</sub> were calibrated using CO<sub>2</sub> standards of 100, 500 and 1000 ppm, respectively. These standards were produced by equilibrating pre-filtered (0.2 µm) seawater (80 ml) with the standard gases at the respective in situ temperature in a thermostat water bath (Julabo). Ion currents of CH<sub>4</sub> were calibrated using CH<sub>4</sub> standards of 1.8 ppm (air), 10, 100, 1000, and 10000 ppm. Similarly to CO<sub>2</sub> standards the methane standards were produced by equilibrating pre-filtered (0.2 µm) seawater samples. Standards for N<sub>2</sub> and Ar were produced by aerating pre filtered seawater (0.2) of different salinities. Different salinities were produced by appropriate dilution of bottom water from the respective working areas. The dissolved gas concentrations of the saturated air equilibrated water standards were calculated using the solubility equations of Hamme and Emerson (2004). Sea water was bubbled with the respective gases in 100 ml glass bottles (Schott) which were closed with a septum. The volume of sea water was 80 ml the resulting headspace was 58.8 ml. Equilibration with the respective gases took place for at least 60 min. Calibrations were conducted after each measurement session. Ion currents for methane were only calibrated for CTD casts conducted at the blow out structure. However discrete water samples were taken during the different pump CTD tracks using Niskin bottles allowing for the adjustments of the two different data sets.

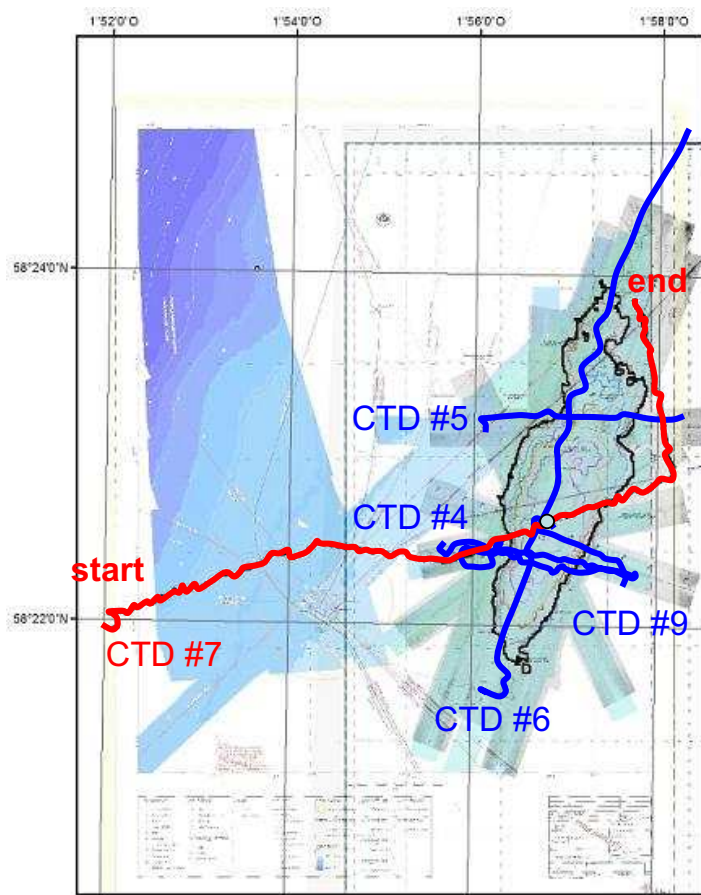
### *In situ flux measurements of $p\text{CO}_2$ and $\text{O}_2$*

Total fluxes of  $p\text{CO}_2$  and  $\text{O}_2$  across the sediment-water interface were measured in benthic chambers using the Biogeochemical Observatory (BIGO) as described in detail by Sommer et al. (2009). In brief, the BIGO contained two circular flux chambers (internal diameter 28.8 cm, area 651.4 cm<sup>2</sup>), hereafter referred to as chamber 1 (C1) and chamber 2 (C2). A TV-guided launching system allowed smooth placement of the observatory on the sea floor. Four hours after the observatories were placed on the sea floor the chambers were slowly driven into the sediment ( $\sim 30 \text{ cm h}^{-1}$ ). During this initial time period where the bottom of the chambers was not closed by the sediment, the water inside the flux chamber was periodically replaced with ambient bottom water. The water body inside the chamber was once further replaced with ambient bottom water after the chamber has been driven into the sediment to flush out solutes that might have been released from the sediment during chamber insertion. For the gas analysis of  $p\text{CO}_2$ ,  $\text{N}_2$ , and Ar 4 water samples were taken from inside each benthic chamber using a peristaltic pump which slowly filled glass tubes. To monitor the ambient bottom water another series of four glass tubes were used. The positions of the sampling ports were about 30 – 40 cm above the sediment water interface. Until measurement these samples were stored at in situ temperature. For the gas analysis the glass tubes were directly connected to the membrane inlet, without the need of transferring the samples into different vials where they might be exposed to the atmosphere.  $\text{O}_2$  was measured inside the chambers and in the ambient sea water using optodes (Aandera) that were calibrated before each lander deployment.

### Preliminary results

#### *Simultaneous $\text{CO}_2$ and $\text{CH}_4$ gas measurements at Sleipner*

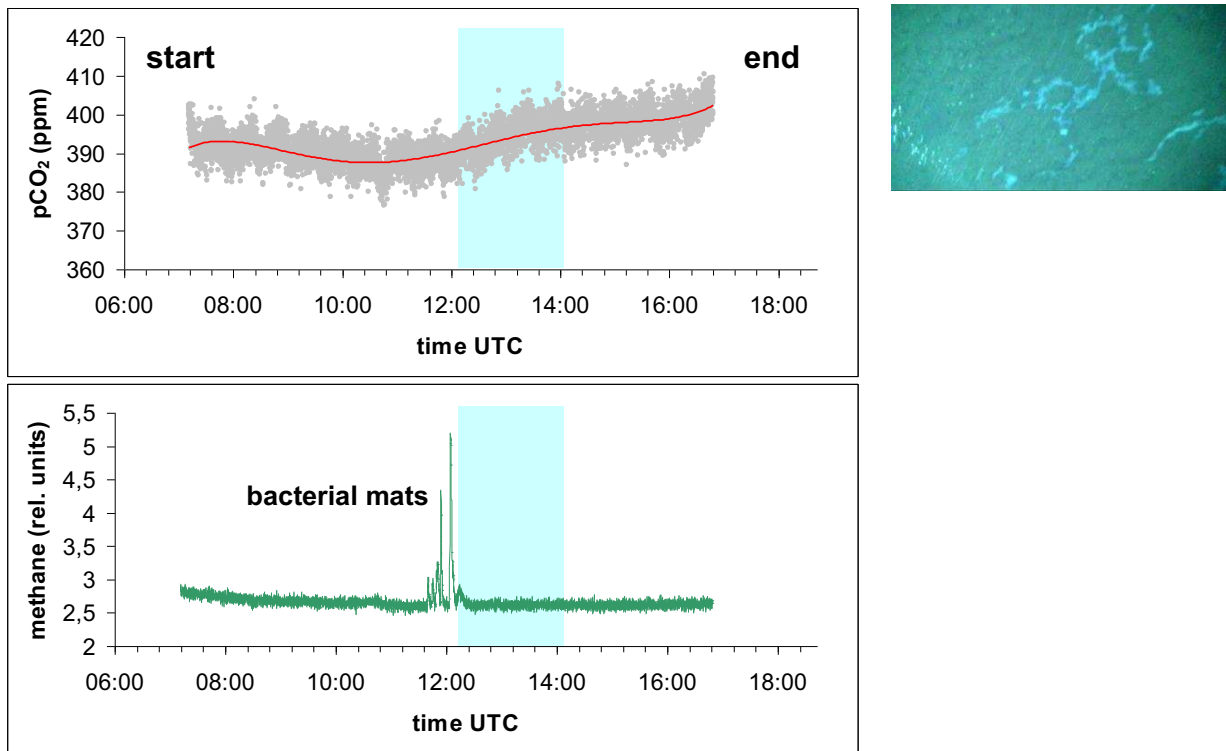
Goal of this study was to conduct baseline measurements of primarily  $p\text{CO}_2$  as well as  $\text{CH}_4$  in the bottom water above the Sleipner sub-seabed  $\text{CO}_2$  storage site. Based on geophysical measurements the extension of the injected  $\text{CO}_2$  has been resolved as an elongated plume that is orientated from the southwest to the northeast (Data provided from Statoil), Figure 40.



**Fig. 40:** Pump CTD tracks over the Sleipner CO<sub>2</sub> storage site (track of CTD 13 not shown). The extension of the CO<sub>2</sub> plume in the sub-seabed is indicated by the black contour line. The circle denotes the injection point of the CO<sub>2</sub>.

During this study three pump CTD transects were conducted across the west-east extension of the sub-seabed CO<sub>2</sub> plume (CTD tracks 4, 5, 7) and one along its major south-west to north-east orientation (CTD track 6), Figure 41. During deployment of CTD track 4 and 7 abandoned wells were included into the survey. CTD track 7 and 9 crossed the central injection point of the CO<sub>2</sub>. For the deployment time as well as start and end positions of the different CTD tracks, see appendix I.

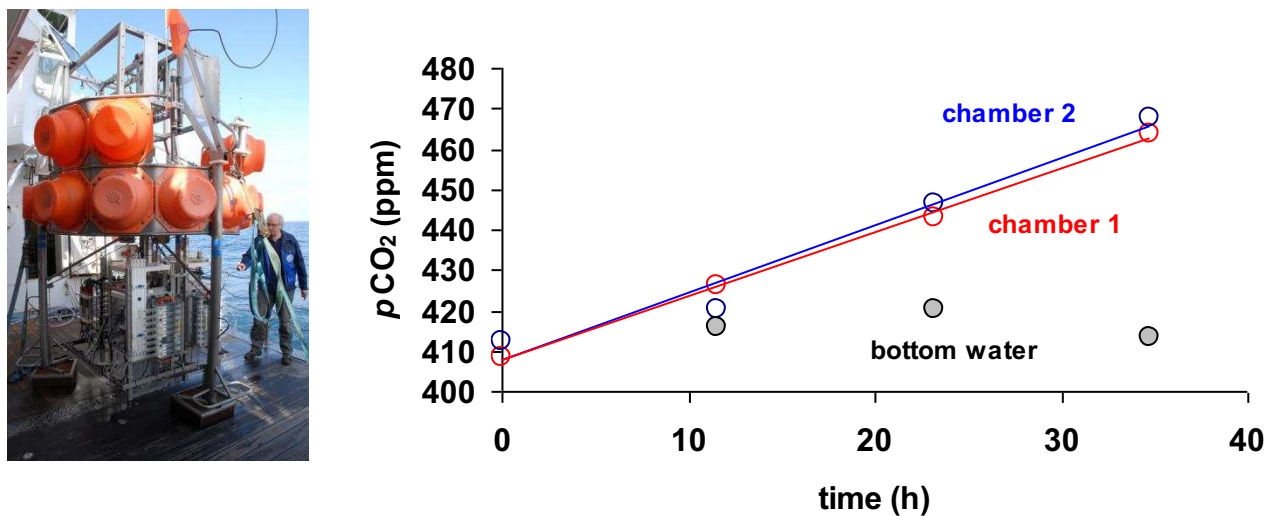
Along all CTD-tracks the variability of bottom water  $p\text{CO}_2$  was low and the  $p\text{CO}_2$  level corresponded to background concentration. An example for bottom water  $p\text{CO}_2$  and  $\text{CH}_4$  during CTD track 7 is shown in figure 41. At the abandoned wells the  $p\text{CO}_2$  level was not elevated. However, during CTD 4 and 7 the well 15/9-13, which was crossed several times from different directions, elevated bottom water  $\text{CH}_4$  concentrations were measured and were found to be associated with small patches of microbial mats (Fig. 41). With regard to all transects, the bottom water  $p\text{CO}_2$  data do not indicate any anomalous seabed CO<sub>2</sub> emissions. The  $p\text{CO}_2$  recordings by the MIMS revealed short time fluctuations representing the noise of the instrument and the experimental set up. Fluctuations on longer time scales as resolved from the moving average might be induced by tidally driven exchange of water masses with slightly different  $p\text{CO}_2$  levels.



**Fig. 41:** upper panel left: bottom water  $p\text{CO}_2$  levels along CTD track 7. Grey dots represent single measurements, red line represents a moving average; lower panel: left, respective bottom water  $\text{CH}_4$ . The blue rectangle indicates extension of the sub-seabed  $\text{CO}_2$  plume. Right: Screen shot with bacterial mats and free gas emission corresponding to the  $\text{CH}_4$  increase at well 15/9-13.

#### Background seabed fluxes of $p\text{CO}_2$ and $\text{O}_2$

Background seabed emission of  $p\text{CO}_2$  was measured inside two benthic chambers deployed during BIGO II 1 lander deployment (Fig. 42). In both chambers  $p\text{CO}_2$  increased (Fig. 43) whereas  $\text{O}_2$  (data not shown) decreased due to benthic respiration.



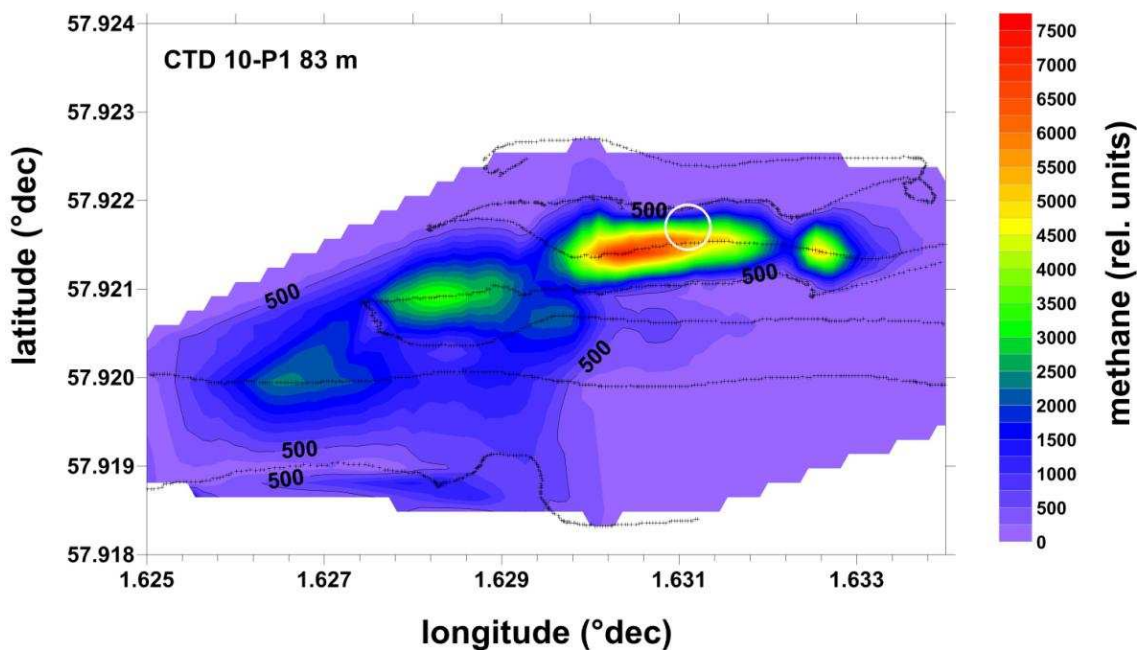
**Fig. 42:** BIGO II-1 lander ready for deployment. **Fig. 43:**  $p\text{CO}_2$  increase inside the two benthic chambers deployed during BIGO II-1 in comparison to bottom water  $p\text{CO}_2$ .



*Blowout structure (Well 22-4b) in the central North Sea*

Major aim of the investigations at the Blowout site was to trace the fate of methane that is released from the seabed into the water column and to assess the proportion of the released methane that reaches the sea surface and is emitted into the atmosphere. Spatial distribution of dissolved methane was investigated by measuring methane concentrations along pump CTD tracks which were conducted on three different depth horizons. CTD track 10 was conducted in 83 m water depth just above the sea floor, CTD track 11 was carried out in 60 m water depth which was below the thermocline, and CTD track 12 was conducted at 10 m water depth.

An example of the horizontal methane distribution above the seafloor is depicted in figure 44. These data has been corrected for the delay between the water sampling and its arrival at the inlet of the mass-spectrometer. Furthermore, only data from a certain time period of the entire track are shown in order to account for the tide and the associated current regime.



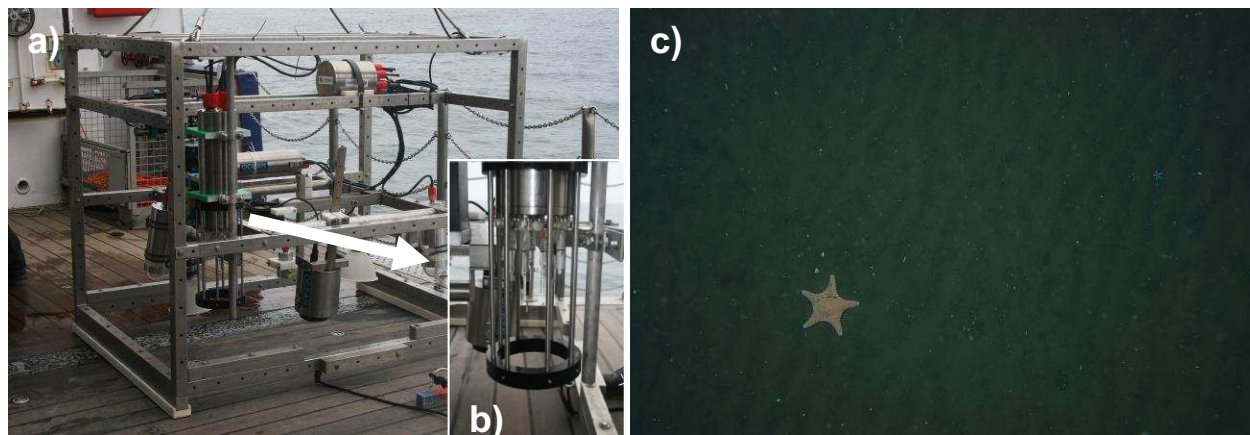
**Fig. 44:** *Isopycnal distribution of dissolved methane during CTD track 10 in 83 m water depth around the blow out structure (white circle). The black crosses indicate positions of the different methane measurements.*

## 7. WATER COLUMN MONITORING, SEDIMENT BIOGEOCHEMISTRY AND MICROBIOLOGY

A. Lichtschlag, C. Wigand, R. Stiens

### *Water column monitoring*

*In situ* monitoring of water column CO<sub>2</sub> concentrations and other environmentally important parameters was done with a microprofiler unit from the MPI attached to the Ocean Floor Observatory System (OFOS) from the IFM-GEOMAR (Fig.45a, b). OFOS is a deep-towed camera sled used to identify and document seafloor expressions as well as associated flora and fauna. The sled was equipped with a digital still camera (Ocean Imaging Systems) and two xenon lights. The autonomously measuring microprofiler unit was equipped with sensors for CO<sub>2</sub>, pH (Microelectrodes Inc.), temperature (PT 1000, Umweltsensortechnik), O<sub>2</sub> and redox potential (self-made). Sensors were calibrated on board at *in situ* temperature and salinity. During the deployment, the sensor array was protected by a cage (Fig.45b). The whole unit was run with a deep-sea battery.



**Fig. 45:** a) OFOS equipped with camera, xenon lights and the microprofiler, b) close-up on sensors within a protecting cage at the lower end of the microprofiler unit, c) picture of the seafloor with starfish, taken during OFOS seafloor exploration at the Sleipner site.

During the 3 deployments, the OFOS was towed at 1-2 knots along a pre-defined track for 2-4 hours (see Table 3) approximately 1 m above the seafloor. The microprofiler sensors recorded in 1 sec. intervals, while OFOS concurrently took images of the seafloor in 5 sec. intervals (Fig. 45c). Data are currently processed.

*Table 3: OFOS tracks during the AL 374 cruise.*

| Stat. | Site            | Water depth | Start of transect       | End of transect         | Date       | Duration (time UTC) |
|-------|-----------------|-------------|-------------------------|-------------------------|------------|---------------------|
| 496   | Salt Dome Juist | 30 m        | 54°2.093'<br>6°50.293'  | 54°2.096'<br>6°50.296'  | 30.05.2011 | 7:58-10:11          |
| 512   | Sleipner        | 79 m        | 58°23.216'<br>1°58.689' | 58°23.204'<br>1°58.603' | 03.06.2011 | 9:25-11:41          |
| 537   | Sleipner        | 85 m        | 58°24.226'<br>1°52.771' | 58°24.223'<br>1°52.948' | 08.06.2011 | 9:16-13:13          |

## *Sediment Biogeochemistry and Microbiology*

In order to monitor the distribution of solutes and the microbial composition at potential CO<sub>2</sub> seepage sites, sediment samples were retrieved either with a Mini Multiple Corer (MMUC, core length of up to 20 cm) or with a Van Veen Grab (SG, approximately upper 10 cm of sediment). Sampling details and sediment description can be found in Table 4. Sediment samples were transferred to a cold room (12°C at Salt Dome Juist; 7°C at Sleipner) and immediately processed. All samples were taken in parallel to macrofauna samples (see chapter 8).

*Table 4: Description of pore water and sediment sampling sites during AL374. MMUC: Mini Multiple Corer, SG: sediment grab (Van Veen Grab).*

| <i>Station</i> | <i>Site</i>  | <i>Sampling device</i> | <i>Water depth</i> | <i>Position N / E</i>   | <i>Date</i> | <i>Core description</i>   |
|----------------|--|------------------------|--------------------|-------------------------|-------------|---|
| <b>499</b>     | Salt Dome Juist,<br><i>potential CO<sub>2</sub> seepage site</i>               | MMUC                   | 30 m               | 54°1.010'<br>6°50.157'  | 30.05.2011  | sandy sediment, no stratification, lower part with shell debris               |
| <b>507</b>     | Sleipner,<br><i>close to abandoned well with gas bubbles and bacterial mat</i> | MMUC                   | 80 m               | 58°22.406'<br>1°55.958' | 02.06.2011  | sandy sediment, some black spots, bioturbation close to sediment surface      |
| <b>514</b>     | Sleipner<br><i>E-W transect</i>  | SG                     | 80 m               | 58°23.193'<br>1°56.771' | 03.06.2011  | sandy sediment (homogenised)  |
| <b>515</b>     | Sleipner<br><i>E-W transect</i>  | SG                     | 79.5 m             | 58°23.207'<br>1°56.900' | 03.06.2011  | sandy sediment (homogenised)  |
| <b>516</b>     | Sleipner<br><i>E-W transect</i>  | SG                     | 79 m               | 58°23.197'<br>1°57.257' | 03.06.2011  | sandy sediment (homogenised)  |
| <b>517</b>     | Sleipner<br><i>E-W transect</i>  | SG                     | 78.7 m             | 58°23.196'<br>1°57.563' | 03.06.2011  | sandy sediment (homogenised)  |
| <b>518</b>     | Sleipner<br><i>E-W transect</i>  | SG                     | 78.3 m             | 58°23.203'<br>1°58.244' | 03.06.2011  | sandy sediment (homogenised)  |
| <b>521</b>     | Sleipner<br><i>centre of E-W transect</i>                                      | MMUC                   | 78.2 m             | 58°23.196'<br>1°57.508' | 04.06.2011  | sandy sediment, no stratification   |
| <b>525</b>     | Sleipner<br><i>centre of CO<sub>2</sub> storage site</i>                       | MMUC                   | 80 m               | 58°22.572'<br>1°56.798' | 05.06.2011  | sandy sediment, no stratification   |
| <b>527</b>     | Sleipner<br><i>Reference site</i>  | MMUC                   | 84.1 m             | 58°22.104'<br>1°52.128' | 06.06.2011  | sandy sediment (coarser than previous stations), greenish, no stratification  |
| <b>530</b>     | Sleipner<br><i>close to abandoned well</i>                                     | MMUC                   | 80 m               | 58°22.392'<br>1°55.916' | 06.06.2011  | sandy sediment, stratification with the upper cm beige, below darker sediment |

Pore water was sampled directly from the sediment using Rhizone soil moisture samplers. For the MMUC samples, the Rhizones were inserted horizontally into the cores through pre-drilled holes sealed with diffusion-tight tape during deployment and connected to standard syringes using luer-lock fittings and PVC tubing. Evacuating the syringe by drawing the piston was sufficient to withdraw filtered pore water from the sediments. 5 or 10 mL syringes were used to sample pore water every 1 cm for the first 5 cm of sediment and every 2 cm until the end of the core (2 arrays for each core). For the SG pore water samples, sediment was filled in 50 mL vials, the vials were sealed with Parafilm and the Rhizones connected to a 5 mL syringe were directly inserted into the sediments.

To determine the concentrations of hydrogen sulphide, sulphate and chloride, 1 mL of pore water was fixed in Eppendorf tubes with 500  $\mu$ L ZnAc at 4°C. For nutrient analyses, approx. 4 mL of pore water was frozen without fixation in 15 mL plastic vials at -20°C. For DIC/alkalinity, 2 mL of pore water was stored headspace-free in glass vials at 4°C. In addition, 2 mL of pore water was stored under the same conditions for DIC isotope measurements. For determining porosity, sediment was sampled and stored at 4°C in 5 mL capped, cut-off syringes. For methane concentration analyses, 5 mL of sediment was added to 10 mL NaOH (2.5%) in 20 mL gas-tight Crimpvials and stored at 4°C.

Samples will be processed in the laboratories of the MPI. In order to evaluate the potential influence of increased CO<sub>2</sub> concentrations (low pH) on microbial communities in the upper sediment layer, several samples were preserved for the analysis of microbial diversity at the respective sites. Molecular techniques will be applied in the home laboratories of the MPI and include acridine orange direct cell counts (AODC), fluorescence *in situ* hybridization (FISH) and DNA extraction. Therefore, 2 mL of sediment was fixed for AODC in 9 mL formaldehyde/seawater at 4°C during the cruise. Additionally, a 0.5 mL-subsample was preserved in 2 mL Et-OH at -20°C for FISH. DNA samples were taken in triplicates and stored in 50 mL tubes at -20°. These samples will serve as background data for our diversity and biogeochemical analyses at natural CO<sub>2</sub> seeps.

To complement the investigations on microbial communities, 25 mL of sediment (MMUC: 0-5 cm and 5-10 cm; SG: bulk) were fixed in 50 mL of a formaldehyde/seawater mixture (4%) in Kautex flasks for meiofauna analyses. The meiofaunal composition within the sediments will be analyzed by Ann Vanreusel (Ghent University, Belgium).

## 8. STUDIES ON BENTHIC COMMUNITY STRUCTURE AND DIVERSITY

S. Syre

In order to elucidate the effects of potential CO<sub>2</sub> leakage from sub-seabed storage sites (Sleipner) and natural CO<sub>2</sub> leakage sites (Juist, southern North Sea) on benthic community structure and diversity, macrobenthos samples were obtained. A second aim of these explorative investigations was to identify abundant species / taxa that could be used as sensitive indicator species for monitoring purposes.

Macrobenthos samples of the surface sediment were taken with a 17L Van Veen grab sampler at 9 stations. Each 4 replicate samples were taken at station 498 (southern North Sea) and at 8 stations along a transect across the Sleipner CO<sub>2</sub> storage site (stations 508, 514, 515, 516, 517, 522, 526, 528). Seawater pH was >8.0 at all sites. At each station, four samples were washed and sieved (1 mm mesh) in order to obtain macrofauna. Three samples per station were fixed in buffered formaldehyde for later taxonomic analysis and a fourth sample was analysed immediately. Typical species frequently found were *Cryptocelides loveni*, *Platynereis dumerilii*, *Pectinaria* spp., *Phascolion strombus*, *Lutraria lutraria*, *Antalis entalis*, *Luidia sarsi*, *Amphiura chiajei*, *Echinocyamus pusillus*, *Echinocardium cordatum* as well as many echinopluteus larvae undergoing metamorphosis.

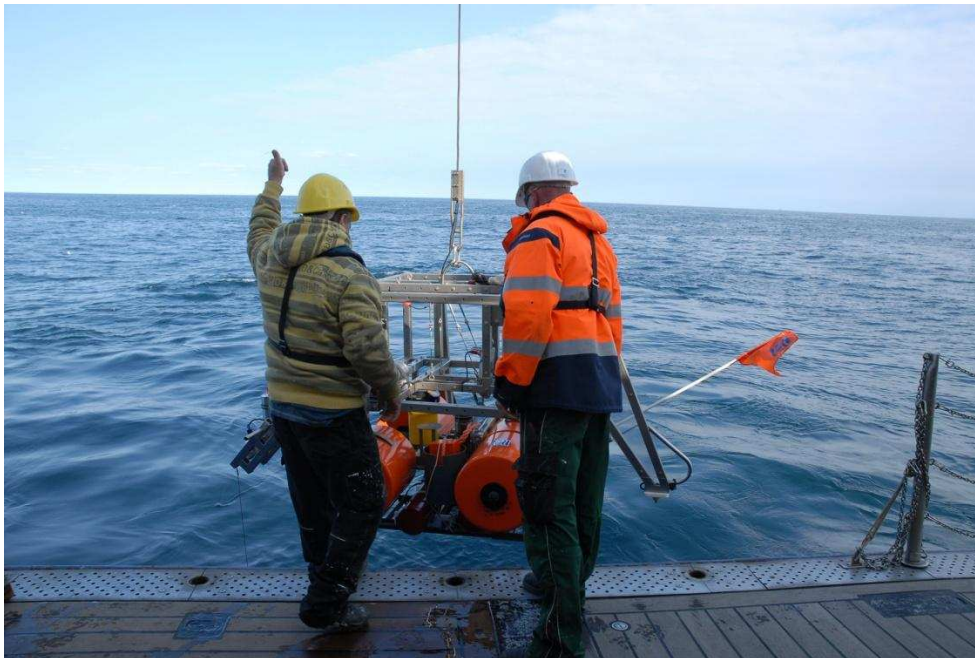
The high abundance of various calcifying echinoderms is encouraging, as these are typically very sensitive to increases in seawater pCO<sub>2</sub> and could thus be used as indicator species. Ongoing laboratory experiments will test their suitability as CO<sub>2</sub> indicator species.

## 9. SATELLITE LANDER DEPLOYMENTS

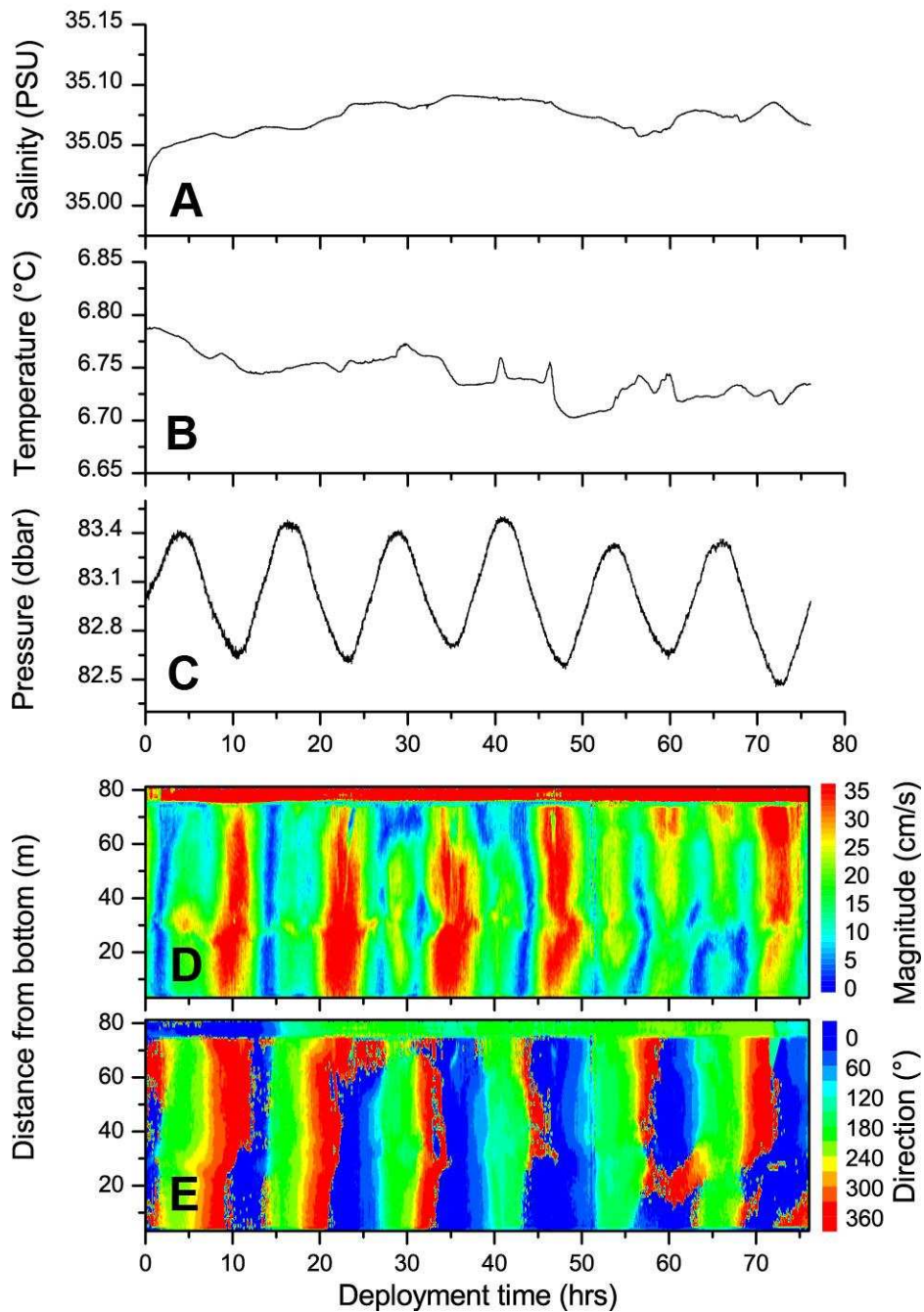
P. Linke, M. Türk

In order to record the environmental control parameters on fluid and gas discharge a small satellite lander was deployed by a video-guided launcher. The lander was equipped with a 300 kHz ADCP (RDI-Teledyne Instruments) and a storage CTD (SBE16plus V2) with a Paroscientific digiquartz pressure sensor. Furthermore, it carried a HARP hydrophone (Scripps Research Institute, La Jolla) with a data logger and a battery casing to record the sound of bubble release.

During the cruise, two deployments were performed: a test deployment at Sleipner and a long-term deployment in the crater of the 22-4b well site (Fig. 46) until recovery in September 2011. The deployment at Sleipner lasted for 3 days and revealed stable oceanographic conditions with tidal pressure fluctuations of  $< 1$  dbar and current velocities of up to 35 cm/s (Fig. 47).



**Fig. 46:** Satellite lander deployment at the 22-4b well site.



**Fig. 47:** Results of the satellite lander deployment at Sleipner: A. Salinity, B. Temperature, and C. Pressure close to the seafloor, D. Current velocities and D. Current directions measured in 1 m bins up to 80 m distance from the seafloor.

## 10. ACKNOWLEDGEMENTS

We thank Captain Norbert Hechler and his crew for their excellent support during the cruise and the members of the technology and logistics center at IFM-GEOMAR for their professional support during mobilization and demobilization of the cruise. Charts of the Sleipner area were provided by Statoil.

## 11. REFERENCES

- Dickson, A.G., Sabine, C.L. and Christian, J.R. (Eds.) 2007. Guide to best practices for ocean CO<sub>2</sub> measurements. PICES Special Publication 3, 191 pp.
- Hamme RC, Emerson SR (2004) The solubility of neon, nitrogen and argon in distilled water and seawater. *Deep-Sea Res I*, 51, 1517-1528.
- Heggland, R. (1997) Detection of gas migration from a deep source by use of exploration 3D seismic data. *Marine Geology* 137, 41–47.
- Keir R. S., Schmale O., Walter, M., Sültenfuß J., Seifert R., Rhein M. (2008) Flux and dispersion of gases from the "Drachenschlund" hydrothermal vent at 8°18'S, 13°30'W. *Earth and Planetary Science Letters*, 270: 338-348.
- McGinnis DF, Schmidt M, DelSontro T, Themann S, Rovelli L, Reitz A, Linke P (2011) Discovery of a natural CO<sub>2</sub> seep in the German North Sea: Implications for shallow dissolved gas and seep detection. *Journal of Geophysical Research*, 116, C03013, doi:10.1029/2010JC006557.
- Rehder G, Keir R.S., Suess E., Pohlmann T. (1998) The multiple sources and patterns of methane in North Sea waters. *Aquatic Geochemistry* 4, 403-427.
- Sommer S, Linke P, Pfannkuche O, Schleicher T, Schneider v. Deimling J, Reitz A, Haeckel M, Flögel S, Hensen C (2009) Seabed methane emissions and the habitat of frenulate tubeworms on the Captain Arutyunov mud volcano (Gulf of Cadiz). *Mar Ecol Prog Ser*, 382, 69-86.
- Thomas H., Bozec Y., Elkalay K., and De Baar H.J.W. (2004) Enhanced open ocean storage of CO<sub>2</sub> from shelf sea pumping. *Science* 304 (5673) 1005–1008.



**ANNEX I: LIST OF STATIONS**

| Station | Gear | No. | Area     | Date   | Start | Coordinates |           | Depth | at depth | Coordinates |           | Depth | End stat. | Coordinates |           | Depth |
|---------|------|-----|----------|--------|-------|-------------|-----------|-------|----------|-------------|-----------|-------|-----------|-------------|-----------|-------|
| No.     |      |     |          | 2011   | Time  | Lat. °N     | Long. °E  | (m)   | Time     | Lat. °N     | Long. °E  | (m)   | Time      | Lat. °N     | Long. °E  | (m)   |
| 495     | VCTD | 1   | SD Juist | 30.05. | 04:15 | 54°1.492'   | 6°50.212' | 30    | 04:27    | 54°1.489'   | 6°50.272' | 30,4  | 06:18     | 54°1.139'   | 6°50.137' | 30,7  |
| 496     | OFOS | 1   | SD Juist | 30.05. | 07:53 | 54°2.093'   | 6°50.293' | 31,8  | 07:58    | 54°2.096'   | 6°50.296' | 31,3  | 10:11     | 54°1.143'   | 6°50.197' | 30,4  |
| 497     | VCTD | 2   | SD Juist | 30.05. | 10:22 | 54°1.109'   | 6°50.182' | 30,8  | 10:29    | 54°1.096'   | 6°50.156' | 30,5  | 10:35     | 54°1.094'   | 6°50.101' | 30    |
| 498     | SG   | 1/1 | SD Juist | 30.05. | 10:52 | 54°1.090'   | 6°50.135' | 30,2  | 10:52    | 54°1.090'   | 6°50.135' | 30,2  | 10:56     | 54°1.079'   | 6°50.140' | 30,3  |
| 498     | SG   | 1/2 | SD Juist | 30.05. | 10:59 | 54°1.076'   | 6°50.138' | 30,2  | 10:59    | 54°1.076'   | 6°50.138' | 30,2  | 11:00     | 54°1.079'   | 6°50.140' | 30,2  |
| 498     | SG   | 1/3 | SD Juist | 30.05. | 11:07 | 54°1.062'   | 6°50.083' | 30,2  | 11:08    | 54°1.060'   | 6°50.082' | 30,5  | 11:08     | 54°1.055'   | 6°50.076' | 30,5  |
| 498     | SG   | 1/4 | SD Juist | 30.05. | 11:15 | 54°1.062'   | 6°50.083' | 30,3  | 11:15    | 54°1.062'   | 6°50.083' | 30,3  | 11:15     | 54°1.062'   | 6°50.083' | 30,3  |
| 499     | MIC  | 1/1 | SD Juist | 30.05. | 11:30 | 54°1.032'   | 6°50.126' | 30,1  | 11:32    | 54°1.03'    | 6°50.12'  | 30,1  | 11:35     | 54°1.012'   | 6°50.157' | 30    |
| 499     | MIC  | 1/2 | SD Juist | 30.05. | 11:39 | 54°1.010'   | 6°50.157' | 30    | 11:41    | 54°1.01'    | 6°50.16'  | 30    | 11:51     | 54°0.999'   | 6°50.212' | 30    |
| 500     | VCTD | 3   | SD Juist | 30.05. | 13:15 | 54°1.144'   | 6°50.333' | 30    | 13:34    | 54°1.220'   | 6°50.336' | 30    | 17:44     | 54°1.769'   | 6°50.385' | 31    |
| 501     | MB   | 1   | SD Juist | 30.05. | 19:30 | 54°1.188'   | 6°50.400' | 31,1  |          |             |           |       | 20:47     | 54°1.144'   | 6°50.004' |       |
| 502     | MB   | 2   | SD Juist | 30.05. | 22:28 | 54°0.200'   | 6°53.000' | 29,3  |          |             |           |       | 01:41     | 54°0.305'   | 6°53.000' |       |
| 503     | MB   | 3   | SD Juist | 30.05. | 02:19 | 54°0.300'   | 6°50.800' | 28,2  |          |             |           |       | 06:58     | 54°0.300'   | 6°50.415' |       |
| 504     | FF   | 1   | SD Juist | 31.05. | 07:00 | 5°1.59'     | 6°45.89'  | 30,6  |          |             |           |       | 08:45     | 54°8.26'    | 7°7.54'   | 37,6  |
| 505     | FF   | 2   | Sleipner | 02.06. | 06:06 | 58°22.366'  | 1°56.013' | 79    |          |             |           |       | 06:22     | 58°22.401'  | 1°56.223' | 79    |
| 506     | VCTD | 4   | Sleipner | 02.06. | 06:57 | 58°22.415'  | 1°55.593' | 80    | 07:26    | 58°22.411'  | 1°55.863' | 79    | 16:06     | 58°22.372'  | 1°56.221' | 79    |
| 507     | MIC  | 2/1 | Sleipner | 02.06. | 16:25 | 58°22.385'  | 1°55.984' | 80    |          |             |           |       | 16:33     | 58°22.40'   | 1°55.94'  | 79,1  |
| 507     | MIC  | 2/2 | Sleipner | 02.06. | 16:35 | 58°22.405'  | 1°55.919' | 80    |          |             |           |       | 16:41     | 58°22.41'   | 1°55.93'  | 80,7  |
| 507     | MIC  | 2/3 | Sleipner | 02.06. | 16:48 | 58°22.404'  | 1°55.924' | 80    |          |             |           |       | 16:52     | 58°22.40'   | 1°55.93'  | 79,6  |
| 507     | MIC  | 2/4 | Sleipner | 02.06. | 16:54 | 58°22.406'  | 1°55.958' | 80    |          |             |           |       | 17:00     | 58°22.40'   | 1°55.95'  | 79,4  |
| 508     | SG   | 2/1 | Sleipner | 02.06. | 17:13 | 58°22.411'  | 1°55.928' | 79    |          |             |           |       | 17:18     | 58°22.40'   | 1°55.92'  | 79,1  |
| 508     | SG   | 2/2 | Sleipner | 02.06. | 17:18 | 58°22.406'  | 1°55.939' | 80    |          |             |           |       | 17:22     | 58°22.41'   | 1°55.92'  | 80,3  |
| 508     | SG   | 2/3 | Sleipner | 02.06. | 17:25 | 58°22.407'  | 1°55.945' | 80    |          |             |           |       | 17:27     | 58°22.41'   | 1°55.94'  | 78,6  |
| 508     | SG   | 2/4 | Sleipner | 02.06. | 17:30 | 58°22.409'  | 1°55.954' | 80    |          |             |           |       | 17:31     | 58°22.41'   | 1°55.95'  | 79,7  |
| 509     | MB   | 4   | Sleipner | 02.06. | 19:00 | 58°21.3'    | 1°55.5'   |       |          |             |           |       | 23:00     | 58°21.54'   | 1°55.5'   |       |
| 510     | MB   | 5   | Sleipner | 02.06. | 23:22 | 58°21.5'    | 1°55.75'  |       |          |             |           |       | 07:15     | 58°21.5'    | 1°58.22'  |       |
| 511     | STL  | 1   | Sleipner | 03.06. | 08:01 | 58°22.434'  | 1°56.025' | 80    | 08:35    | 58°22.446'  | 1°55.976' | 79    | 08:36     | 58°22.447'  | 1°55.977' | 79    |
| 512     | OFOS | 2   | Sleipner | 03.06. | 09:20 | 58°23.216'  | 1°58.689' | 79    | 09:25    | 58°23.204'  | 1°58.603' | 79    | 11:41     | 58°23.181'  | 1°56.697' | 79    |
| 513     | VCTD | 5   | Sleipner | 03.06. | 12:04 | 58°23.190'  | 1°58.539' | 79    | 12:28    | 58°23.187'  | 1°58.301' | 79    | 15:00     | 58°23.155'  | 1°56.230' | 80    |
| 514     | SG   | 3/1 | Sleipner | 03.06. | 15:10 | 58°23.193'  | 1°56.771' | 80    |          |             |           |       | 15:12     | 58°23.19'   | 1°56.77'  | 79,6  |
| 514     | SG   | 3/2 | Sleipner | 03.06. | 15:17 | 58°23.182'  | 1°56.748' | 79,8  |          |             |           |       | 15:19     | 58°23.18'   | 1°56.74'  | 79,4  |

| Station | Gear | No. | Area     | Date   | Start | Coordinates |           | Depth | at depth | Coordinates |           | Depth | End stat. | Coordinates |           | Depth |
|---------|------|-----|----------|--------|-------|-------------|-----------|-------|----------|-------------|-----------|-------|-----------|-------------|-----------|-------|
| 514     | SG   | 3/3 | Sleipner | 03.06. | 15:22 | 58°23.167'  | 1°56.732' | 79,4  |          |             |           |       | 15:25     | 58°23.16'   | 1°56.76'  | 79,7  |
| 514     | SG   | 3/4 | Sleipner | 03.06. | 15:27 | 58°23.138'  | 1°56.778' | 79,3  |          |             |           |       | 15:27     | 58°23.15'   | 1°56.77'  | 79,7  |
| 514     | SG   | 3/5 | Sleipner | 03.06. | 15:30 | 58°23.126'  | 1°56.788' | 79,4  |          |             |           |       | 15:33     | 58°23.13'   | 1°56.79'  | 79,5  |
| 515     | SG   | 4/1 | Sleipner | 03.06. | 15:45 | 58°23.207'  | 1°56.900' | 79,5  |          |             |           |       | 15:48     | 58°23.21'   | 1°56.89'  | 79,6  |
| 515     | SG   | 4/2 | Sleipner | 03.06. | 15:52 | 58°23.185'  | 1°56.933' | 79,3  |          |             |           |       | 15:56     | 58°23.21'   | 1°56.91'  | 79,4  |
| 515     | SG   | 4/3 | Sleipner | 03.06. | 15:58 | 58°23.222'  | 1°56.858' | 79,2  |          |             |           |       | 16:00     | 58°23.22'   | 1°56.86'  | 78,4  |
| 515     | SG   | 4/4 | Sleipner | 03.06. | 16:02 | 58°23.207'  | 1°56.872' | 79,4  |          |             |           |       | 16:04     | 58°23.21'   | 1°56.87'  | 79,6  |
| 515     | SG   | 4/5 | Sleipner | 03.06. | 16:08 | 58°23.196'  | 1°56.918' | 78,9  |          |             |           |       | 16:09     | 58°23.20'   | 1°56.92'  | 79,4  |
| 516     | SG   | 5/1 | Sleipner | 03.06. | 16:18 | 58°23.197'  | 1°57.257' | 79    |          |             |           |       | 16:20     | 58°23.20'   | 1°57.26'  | 79,2  |
| 516     | SG   | 5/2 | Sleipner | 03.06. | 16:23 | 58°23.201'  | 1°57.216' | 78,9  |          |             |           |       | 16:26     | 58°23.20'   | 1°57.20'  | 79,4  |
| 516     | SG   | 5/3 | Sleipner | 03.06. | 16:28 | 58°23.179'  | 1°57.205' | 79,1  |          |             |           |       | 16:30     | 58°23.18'   | 1°57.21'  | 79    |
| 516     | SG   | 5/4 | Sleipner | 03.06. | 16:32 | 58°23.187'  | 1°57.245' | 78,8  |          |             |           |       | 16:34     | 58°23.19'   | 1°57.25'  | 79,2  |
| 516     | SG   | 5/5 | Sleipner | 03.06. | 16:37 | 58°23.197'  | 1°57.308' | 79,3  |          |             |           |       | 16:38     | 58°23.20'   | 1°57.31'  | 78,5  |
| 517     | SG   | 6/1 | Sleipner | 03.06. | 16:46 | 58°23.196'  | 1°57.563' | 78,7  |          |             |           |       | 16:48     | 58°23.19'   | 1°57.56'  | 79    |
| 517     | SG   | 6/2 | Sleipner | 03.06. | 16:52 | 58°23.203'  | 1°57.523' | 78,9  |          |             |           |       | 16:54     | 58°23.20'   | 1°57.52'  | 78,8  |
| 517     | SG   | 6/3 | Sleipner | 03.06. | 16:56 | 58°23.203'  | 1°57.554' | 79    |          |             |           |       | 16:58     | 58°23.20'   | 1°57.56'  | 79,2  |
| 517     | SG   | 6/4 | Sleipner | 03.06. | 17:00 | 58°23.211'  | 1°57.564' | 79,2  |          |             |           |       | 17:02     | 58°23.21'   | 1°57.56'  | 78,9  |
| 517     | SG   | 6/5 | Sleipner | 03.06. | 17:04 | 58°23.208'  | 1°57.539' | 78,8  |          |             |           |       | 17:06     | 58°23.21'   | 1°57.53'  | 78,3  |
| 518     | SG   | 7   | Sleipner | 03.06. | 17:21 | 58°23.203'  | 1°58.244' | 78,3  |          |             |           |       | 17:25     | 58°23.20'   | 1°58.22'  | 79    |
| 519     | MB   | 6   | Sleipner | 03.06. | 18:42 | 58°24.0'    | 1°56.85'  |       |          |             |           |       | 05:11     | 58°23.6'    | 1°56.0'   |       |
| 520     | VCTD | 6   | Sleipner | 04.06. | 06:02 | 58°21.506'  | 1°56.196' | 79    | 06:20    | 58°21.644'  | 1°56.288' | 79    | 17:55     | 58°28.552'  | 2°1.774'  | 80    |
| 521     | MIC  | 3/1 | Sleipner | 04.06. | 18:56 | 58°23.189'  | 1°57.509' | 79,1  |          |             |           |       | 19:00     | 58°23.19'   | 1°57.51'  | 79,4  |
| 521     | MIC  | 3/2 | Sleipner | 04.06. | 19:03 | 58°23.192'  | 1°57.519' | 79,6  |          |             |           |       | 19:04     | 58°23.19'   | 1°57.52'  | 78,4  |
| 521     | MIC  | 3/3 | Sleipner | 04.06. | 19:09 | 58°23.186'  | 1°57.514' | 79,2  |          |             |           |       | 19:12     | 58°23.18'   | 1°57.52'  | 78,7  |
| 521     | MIC  | 3/4 | Sleipner | 04.06. | 19:15 | 58°23.198'  | 1°57.510' | 78,9  |          |             |           |       | 19:16     | 58°23.20'   | 1°57.51'  | 78,4  |
| 521     | MIC  | 3/2 | Sleipner | 04.06. | 19:21 | 58°23.196'  | 1°57.508' | 78,2  |          |             |           |       | 19:23     | 58°23.20'   | 1°57.50'  | 79,3  |
| 522     | SG   | 8/1 | Sleipner | 04.06. | 19:50 | 58°23.205'  | 1°58.282' | 78,2  |          |             |           |       | 19:51     | 58°23.21'   | 1°58.28'  | 78,4  |
| 522     | SG   | 8/2 | Sleipner | 04.06. | 19:53 | 58°23.200'  | 1°58.290' | 79,2  | 19:54    | 58°23.20'   | 1°58.28'  | 79    | 19:55     | 58°23.20'   | 1°58.28'  | 79    |
| 522     | SG   | 8/3 | Sleipner | 04.06. | 19:56 | 58°23.226'  | 1°58.261' | 78,4  | 19:56    | 58°23.22'   | 1°58.26'  | 78,3  | 19:58     | 58°23.23'   | 1°58.26'  | 78,5  |
| 522     | SG   | 8/4 | Sleipner | 04.06. | 20:00 | 58°23.217'  | 1°58.241' | 78,4  | 20:00    | 58°23.22'   | 1°58.25'  | 78,6  | 20:02     | 58°23.21'   | 1°58.24'  | 77,8  |
| 522     | SG   | 8/5 | Sleipner | 04.06. | 20:03 | 58°23.209'  | 1°58.205' | 78,4  | 20:04    | 58°23.21'   | 1°58.20'  | 78,9  | 20:06     | 58°23.21'   | 1°59.19'  | 78,5  |
| 523     | MB   | 7   | Sleipner | 04.06. | 20:55 | 58°23.8'    | 1°52.0'   |       |          |             |           |       | 23:54     | 58°23.8'    | 1°52.95'  |       |
| 524     | VCTD | 7   | Sleipner | 05.06. | 06:42 | 58°21.952'  | 1°52.002' | 84    | 07:02    | 58°22.027'  | 1°52.113' | 84    | 17:18     | 58°23.910'  | 1°57.747' | 79    |
| 525     | MIC  | 4/1 | Sleipner | 05.06. | 17:42 | 58°22.555'  | 1°56.780' | 80    |          |             |           |       | 17:46     | 58°22.57'   | 1°56.77'  | 79,2  |

| Station | Gear | No.  | Area     | Date   | Start | Coordinates |           | Depth | at depth | Coordinates |           | Depth | End stat. | Coordinates |           | Depth |
|---------|------|------|----------|--------|-------|-------------|-----------|-------|----------|-------------|-----------|-------|-----------|-------------|-----------|-------|
| 525     | MIC  | 4/2  | Sleipner | 05.06. | 17:48 | 58°22.583'  | 1°56.766' | 78,9  |          |             |           |       | 17:52     | 58°22.59'   | 1°56.78'  | 78,8  |
| 525     | MIC  | 4/3  | Sleipner | 05.06. | 17:54 | 58°22.572'  | 1°56.798' | 80    |          |             |           |       | 17:57     | 58°22.57'   | 1°56.80'  | 79,5  |
| 526     | SG   | 9/1  | Sleipner | 05.06. | 18:06 | 58°22.613'  | 1°56.729' | 79,8  |          |             |           |       | 18:08     | 58°22.61'   | 1°56.73'  | 78,5  |
| 526     | SG   | 9/2  | Sleipner | 05.06. | 18:10 | 58°22.640'  | 1°56.730' | 78,8  |          |             |           |       | 18:11     | 58°22.64'   | 1°56.73'  | 79,6  |
| 526     | SG   | 9/3  | Sleipner | 05.06. | 18:13 | 58°22.654'  | 1°56.736' | 79,7  |          |             |           |       | 18:15     | 58°22.65'   | 1°56.74'  | 79,7  |
| 526     | SG   | 9/4  | Sleipner | 05.06. | 18:16 | 58°22.654'  | 1°56.729' | 79,4  |          |             |           |       | 18:18     | 58°22.65'   | 1°56.73'  | 78,9  |
| 527     | MIC  | 5/1  | Sleipner | 06.06. | 06:01 | 58°22.080'  | 1°52.245' | 84,2  |          |             |           |       | 06:05     | 58°22.09'   | 1°52.21'  | 83,4  |
| 527     | MIC  | 5/2  | Sleipner | 06.06. | 06:10 | 58°22.113'  | 1°52.153' | 84    |          |             |           |       | 06:14     | 58°22.11'   | 1°52.14'  | 84,1  |
| 527     | MIC  | 5/3  | Sleipner | 06.06. | 06:17 | 58°22.104'  | 1°52.128' | 84,1  |          |             |           |       | 06:22     | 58°22.11'   | 1°52.13'  | 84    |
| 528     | SG   | 10/1 | Sleipner | 06.06. | 06:42 | 58°22.134'  | 1°52.113' | 84,6  |          |             |           |       | 06:45     | 58°22.13'   | 1°52.10'  | 84,4  |
| 528     | SG   | 10/2 | Sleipner | 06.06. | 06:47 | 58°22.130'  | 1°52.076' | 84    |          |             |           |       | 06:49     | 58°22.13'   | 1°52.08'  | 84,4  |
| 528     | SG   | 10/3 | Sleipner | 06.06. | 06:51 | 58°22.133'  | 1°52.068' | 84    |          |             |           |       | 06:53     | 58°22.14'   | 1°52.07'  | 83,8  |
| 528     | SG   | 10/4 | Sleipner | 06.06. | 06:55 | 58°22.172'  | 1°52.091' | 84,9  |          |             |           |       | 06:58     | 58°22.18'   | 1°52.10'  | 84,8  |
| 529     | BIGO | 1    | Sleipner | 06.06. | 09:57 | 58°22.602'  | 1°56.872' | 80    | 10:03    | 58°22.598'  | 1°56.856' | 80    | 10:08     | 58°22.597'  | 1°56.860' | 80    |
| 530     | MIC  | 6/1  | Sleipner | 06.06. | 11:23 | 58°22.394'  | 1°55.955' | 80    |          |             |           |       | 11:28     | 58°22.39'   | 1°55.94'  | 80    |
| 530     | MIC  | 6/2  | Sleipner | 06.06. | 11:29 | 58°22.390'  | 1°55.938' | 79,7  |          |             |           |       | 11:32     | 58°22.39'   | 1°55.94'  | 79,5  |
| 530     | MIC  | 6/3  | Sleipner | 06.06. | 11:36 | 58°22.400'  | 1°55.940' | 79,9  |          |             |           |       | 11:39     | 58°22.40    | 1°55.93'  | 80,1  |
| 530     | MIC  | 6/4  | Sleipner | 06.06. | 11:53 | 58°22.384'  | 1°55.959' | 80    |          |             |           |       | 11:56     | 58°22.39'   | 1°55.97'  | 80,2  |
| 530     | MIC  | 6/5  | Sleipner | 06.06. | 11:58 | 58°22.391'  | 1°55.940' | 80    |          |             |           |       | 11:59     | 58°22.39'   | 1°55.94'  | 79,9  |
| 530     | MIC  | 6/6  | Sleipner | 06.06. | 12:01 | 58°22.392'  | 1°55.916' | 80    |          |             |           |       | 12:06     | 58°22.39'   | 1°55.93'  | 79,9  |
| 531     | STL  | 2    | Sleipner | 06.06. | 12:00 |             |           |       |          |             |           |       | 13:13     | 58°22.271'  | 1°56.434' | 80    |
| 532     | MB   | 8    | Blowout  | 06.06. | 17:51 | 57°55.3'    | 1°37.0'   |       |          |             |           |       | 01:54     | 57°55.25'   | 1°37.7'   |       |
| 533     | MB   | 9    | Blowout  | 07.06. | 06:41 | 57°54.92'   | 1°37.47'  | 93,4  |          |             |           |       | 07:22     | 57°55.49'   | 1°38.08'  | 93,3  |
| 534     | VCTD | 8    | Blowout  | 07.06. | 07:30 | 57°55.448'  | 1°38.052' | 94    | 07:38    | 57°55.346'  | 1°37.909' | 93    | 15:53     | 57°55.135'  | 1°37.691' | 93    |
| 535     | STL  | 3    | Blowout  | 07.06. | 16:19 | 57°55.260'  | 1°77.816' | 93    |          | 57°55.360'  | 1°37.862' | 104   | 16:40     | 57°55.331'  | 1°37.884' | 93    |
| 536     | BIGO | 2    | Sleipner | 08.06. | 06:33 | 56°22.662'  | 1°56.820' | 80    | 06:42    | 58°22.660'  | 1°56.788' | 80    | 07:00     | 58°22.714'  | 1°56.918' | 80    |
| 537     | OFOS | 3    | Sleipner | 08.06. | 09:10 | 58°24.226'  | 1°52.771' | 85    | 09:16    | 58°24.223'  | 1°52.948' | 85    | 13:13     | 58°22.398'  | 1°57.789' | 80    |
| 538     | VCTD | 9    | Sleipner | 08.06. | 14:17 | 58°22.576'  | 1°56.791' | 79    |          |             |           |       | 17:41     | 58°22.515'  | 1°56.743' | 80    |
| 539     | MB   | 10   | Sleipner | 08.06. | 18:00 | 58°21.5'    | 1°58.0'   |       |          |             |           |       | 22:05     | 58°21.8'    | 1°51.86'  |       |
| 540     | VCTD | 10   | Blowout  | 09.06. | 07:00 | 57°55.380'  | 1°37.698' | 93    | 07:32    | 57°55.353'  | 1°37.766' | 93    | 12:50     | 57°55.381'  | 1°37.770' | 93    |
| 541     | MB   | 11   | Blowout  | 09.06. | 15:13 | 57°55.15'   | 1°37.5'   |       |          |             |           |       | 18:12     | 57°55.45'   | 1°37.5'   |       |
| 542     | VCTD | 11/1 | Blowout  | 10.06. | 06:30 | 57°55.125'  | 1°37.888' | 93    |          |             |           |       | 09:12     | 57°55.32'   | 1°38.03'  | 93    |
| 543     | VCTD | 11/2 | Blowout  | 10.06. | 09:32 | 57°55.43'   | 1°37.96'  | 93    |          |             |           |       | 11:50     | 57°55.347'  | 1°37.671' | 93    |
| 544     | VCTD | 12   | Blowout  | 10.06. | 12:27 | 57°55.479'  | 1°37.749' | 93    |          |             |           |       | 17:10     | 57°55.365'  | 1°37.874' | 93    |

| Station | Gear | No. | Area     | Date   | Start | Coordinates |           | Depth | at depth | Coordinates |           | Depth | End stat. | Coordinates |           | Depth |
|---------|------|-----|----------|--------|-------|-------------|-----------|-------|----------|-------------|-----------|-------|-----------|-------------|-----------|-------|
| 545     | FF   | 3   | Sleipner | 11.06. | 05:58 | 58°21.501'  | 1°53.299' | 84    |          |             |           |       | 06:41     | 58°21.91'   | 1°52.61'  | 83,3  |
| 546     | FF   | 4   | Sleipner | 11.06. | 06:50 | 58°22.05'   | 1°52.58'  | 83,5  |          |             |           |       | 07:00     | 58°21.49'   | 1°53.21'  | 82,2  |
| 547     | VCTD | 13  | Sleipner | 11.06. | 07:41 | 58°21.122'  | 1°53.236' | 82    | 08:05    | 58°21.150'  | 1°53.199' | 82    | 13:12     | 58°21.723'  | 1°53.182' | 81    |

Times in UTC (Local time = summer time – 2 hours)

**Gear:**

**BIGO:** Biogeochemical Observatory

**FF:** Fishfinder

**MIC:** Mini Corer

**MB:** Multibeam

**OFOS:** Ocean Floor Observation System

**SG:** Sediment Grab

**STL:** Satellite Lander

**VCTD:** Video-CTD/Rosette

**ANNEX II: LIST OF MULTIBEAM AND ECHOSOUNDER PROFILES**

| TIME       | DATE        | LONG     | dec'   | LAT      | dec'  | Heading | NOTE / WORKING AREA                | FILE-NAME-START | FILE-NAME-END          |
|------------|-------------|----------|--------|----------|-------|---------|------------------------------------|-----------------|------------------------|
| <b>UTC</b> | <b>2011</b> | <b>E</b> |        | <b>N</b> |       |         | <b>SALT DOME JUIST</b>             |                 | <b>SALT DOME JUIST</b> |
|            | 30/05/      | 6        | 50,4   | 54       | 1,188 | 270     | START of Profile I-A Calibration   | 002             | 002                    |
|            | 30/05/      | 6        | 49,8   | 54       | 1,188 | 270     | END of Profile I-A Calibration     | 002             | 002                    |
|            | 30/05/      | 6        | 49,8   | 54       | 1,188 | 90      | START of Profile I-B Calibration   | 003             | 003                    |
| 19:44      | 30/05/      | 6        | 50,4   | 54       | 1,188 | 90      | END of Profile I-B Calibration     | 003             | 003                    |
| 19:57      | 30/05/      | 6        | 50,4   | 54       | 1,166 | 270     | START of Profile II-A Calibration  | 004             | 004                    |
| 20:01      | 30/05/      | 6        | 49,8   | 54       | 1,166 | 270     | END of Profile II-A Calibration    | 004             | 004                    |
| 20:11      | 30/05/      | 6        | 49,8   | 54       | 1,166 | 90      | START of Profile II-B Calibration  | 005             | 005                    |
| 20:16      | 30/05/      | 6        | 50,4   | 54       | 1,166 | 90      | END of Profile II-B Calibration    | 005             | 005                    |
| 20:27      | 30/05/      | 6        | 50,4   | 54       | 1,144 | 270     | START of Profile III-A Calibration | 006             | 006                    |
| 20:31      | 30/05/      | 6        | 49,8   | 54       | 1,144 | 270     | END of Profile III-A Calibration   | 006             | 006                    |
| 20:43      | 30/05/      | 6        | 49,8   | 54       | 1,144 | 90      | START of Profile III-B Calibration | 007             | 007                    |
| 20:47      | 30/05/      | 6        | 50,4   | 54       | 1,144 | 90      | END of Profile III-B Calibration   | 007             | 007                    |
| 22:28      | 30/05/      | 6        | 53     | 54       | 0,2   | 270     | START of Profile 001               | 008             | 011                    |
| 23:11      | 30/05/      | 6        | 45     | 54       | 0,2   | 270     | END of Profile 001                 | 008             | 011                    |
| 23:18      | 30/05/      | 6        | 45     | 54       | 0,235 | 90      | START of Profile 002               | 012             | 015                    |
| 00:02      | 31/05/      | 6        | 53     | 54       | 0,235 | 90      | END of Profile 002                 | 012             | 015                    |
| 00:06      | 31/05/      | 6        | 53     | 54       | 0,27  | 270     | START of Profile 003               | 016             | 019                    |
| 0:50       | 31/05/      | 6        | 45     | 54       | 0,27  | 270     | END of Profile 003                 | 016             | 019                    |
| 0:56       | 31/05/      | 6        | 45     | 54       | 0,305 | 90      | START of Profile 004               | 020             | 023                    |
| 01:41      | 31/05/      | 6        | 53     | 54       | 0,305 | 90      | END of Profile 004                 | 020             | 023                    |
| 02:19      | 31/05/      | 6        | 50,8   | 54       | 0,3   | 360     | START of Profile 005               | 024             | 025                    |
| 02:38      | 31/05/      | 6        | 50,8   | 54       | 2,4   | 360     | END of Profile 005                 | 024             | 025                    |
| 02:46      | 31/05/      | 6        | 50,75  | 54       | 2,4   | 180     | START of Profile 006               | 026             | 027                    |
| 03:06      | 31/05/      | 6        | 50,75  | 54       | 0,3   | 180     | END of Profile 006                 | 026             | 027                    |
| 03:13      | 31/05/      | 6        | 50,69  | 54       | 0,3   | 360     | START of Profile 007               | 028             | 029                    |
| 03:33      | 31/05/      | 6        | 50,69  | 54       | 2,4   | 360     | END of Profile 007                 | 028             | 029                    |
| 03:41      | 31/05/      | 6        | 50,64  | 54       | 2,4   | 180     | START of Profile 008               | 030             | 031                    |
| 04:01      | 31/05/      | 6        | 50,64  | 54       | 0,3   | 180     | END of Profile 008                 | 030             | 031                    |
| 04:08      | 31/05/      | 6        | 50,58  | 54       | 0,3   | 360     | START of Profile 009               | 032             | 033                    |
| 04:29      | 31/05/      | 6        | 50,58  | 54       | 2,4   | 360     | END of Profile 009                 | 032             | 033                    |
| 04:39      | 31/05/      | 6        | 50,53  | 54       | 2,4   | 180     | START of Profile 010               | 034             | 035                    |
| 04:59      | 31/05/      | 6        | 50,53  | 54       | 0,3   | 180     | END of Profile 010                 | 034             | 035                    |
| 05:09      | 31/05/      | 6        | 50,47  | 54       | 0,3   | 360     | START of Profile 011               | 036             | 037                    |
| 05:29      | 31/05/      | 6        | 50,47  | 54       | 2,4   | 360     | END of Profile 011                 | 036             | 037                    |
| 05:39      | 31/05/      | 6        | 50,42  | 54       | 2,4   | 180     | START of Profile 012               | 038             | 040                    |
| 06:58      | 05/31/      | 6        | 50,415 | 54       | 0,3   | 180     | END of Profile 012                 | 038             | 040                    |
| <b>UTC</b> | <b>2011</b> | <b>E</b> |        | <b>N</b> |       |         | <b>SLEIPNER PLUME</b>              |                 | <b>SLEIPNER</b>        |
| 19:05      | 02/06/      | 1        | 55,5   | 58       | 21,3  | 90      | START of Profile I-A Calibration   | 040             | FEHLER                 |
|            | 02/06/      | 1        | 57,3   | 58       | 21,3  | 90      | END of Profile I-A Calibration     | 040             | FEHLER                 |
|            | 02/06/      | 1        | 57,3   | 58       | 21,3  | 270     | START of Profile I-B Calibration   | 041             | FEHLER                 |
| 19:39      | 02/06/      | 1        | 55,5   | 58       | 21,3  | 270     | END of Profile I-B Calibration     | 041             | FEHLER                 |
| ~20:40     | 02/06/      | 1        | 55,5   | 58       | 21,3  | 90      | START of Profile I-A Calibration   | 042             | 042                    |
| 20:49      | 02/06/      | 1        | 57,3   | 58       | 21,3  | 90      | END of Profile I-A Calibration     | 042             | 042                    |

| TIME       | DATE        | LONG     | dec'  | LAT      | dec'  | Heading | NOTE / WORKING AREA                | FILE-NAME-START | FILE-NAME-END   |
|------------|-------------|----------|-------|----------|-------|---------|------------------------------------|-----------------|-----------------|
| 21:02      | 02/06/      | 1        | 57,3  | 58       | 21,3  | 270     | START of Profile I-B Calibration   | 043             | 043             |
| 21:14      | 02/06/      | 1        | 55,5  | 58       | 21,3  | 270     | END of Profile I-B Calibration     | 043             | 043             |
|            | 02/06/      |          |       |          |       | 90      | START of Profile II-A Calibration  | 044             | 044             |
| 21:47      | 02/06/      |          |       |          |       | 90      | END of Profile II-A Calibration    | 044             | 044             |
| 21:56      | 02/06/      |          |       |          |       | 270     | START of Profile II-B Calibration  | 045             | 045             |
| 22:09      | 02/06/      |          |       |          |       | 270     | END of Profile II-B Calibration    | 045             | 045             |
| 22:28      | 02/06/      |          |       |          |       | 90      | START of Profile III-A Calibration | 046             |                 |
| 22:41      | 02/06/      |          |       |          |       | 90      | END of Profile III-A Calibration   | 046             |                 |
| 22:50      | 02/06/      |          |       |          |       | 270     | START of Profile III-B Calibration | 047             |                 |
|            | 02/06/      |          |       |          |       | 270     | END of Profile III-B Calibration   | 047             |                 |
| 23:22      | 02/06/      | 1        | 55,75 | 58       | 21,5  | 360     | START of Profile 001               | 048             |                 |
| 23:50      | 02/06/      | 1        | 55,75 | 58       | 24,2  | 360     | END of Profile 001                 | 048             |                 |
| 23:55      | 02/06/      | 1        | 55,94 | 58       | 24,2  | 180     | START of Profile 002               | 049             |                 |
| 00:23      | 03/06/      | 1        | 55,94 | 58       | 21,5  | 180     | END of Profile 002                 | 049             |                 |
|            | 03/06/      | 1        | 56,13 | 58       | 21,5  | 360     | START of Profile 003               | 050             |                 |
| 00:58      | 03/06/      | 1        | 56,13 | 58       | 24,2  | 360     | END of Profile 003                 | 050             |                 |
| 01:03      | 03/06/      | 1        | 56,32 | 58       | 24,2  | 180     | START of Profile 004               | 051             |                 |
| 01:30      | 03/06/      | 1        | 56,32 | 58       | 21,5  | 180     | END of Profile 004                 | 051             |                 |
| 01:38      | 03/06/      | 1        | 56,51 | 58       | 21,5  | 360     | START of Profile 005               | 052             |                 |
| 02:05      | 03/06/      | 1        | 56,51 | 58       | 24,2  | 360     | END of Profile 005                 | 052             |                 |
| 02:12      | 03/06/      | 1        | 56,7  | 58       | 24,2  | 180     | START of Profile 006               | 053             |                 |
| 02:40      | 03/06/      | 1        | 56,7  | 58       | 21,5  | 180     | END of Profile 006                 | 053             |                 |
| 02:48      | 03/06/      | 1        | 56,89 | 58       | 21,5  | 360     | START of Profile 007               | 054             |                 |
| 03:15      | 03/06/      | 1        | 56,89 | 58       | 24,2  | 360     | END of Profile 007                 | 054             |                 |
| 03:22      | 03/06/      | 1        | 57,08 | 58       | 24,2  | 180     | START of Profile 008               | 055             |                 |
| 03:50      | 03/06/      | 1        | 57,08 | 58       | 21,5  | 180     | END of Profile 008                 | 055             |                 |
| 03:58      | 03/06/      | 1        | 57,27 | 58       | 21,5  | 360     | START of Profile 009               | 056             |                 |
| 04:24      | 03/06/      | 1        | 57,27 | 58       | 24,2  | 360     | END of Profile 009                 | 056             |                 |
| 04:33      | 03/06/      | 1        | 57,46 | 58       | 24,2  | 180     | START of Profile 010               | 057             |                 |
| 05:00      | 03/06/      | 1        | 57,46 | 58       | 21,5  | 180     | END of Profile 010                 | 057             |                 |
| 05:07      | 03/06/      | 1        | 57,65 | 58       | 21,5  | 360     | START of Profile 011               | 058             |                 |
| 05:35      | 03/06/      | 1        | 57,65 | 58       | 24,2  | 360     | END of Profile 011                 | 058             |                 |
|            | 03/06/      | 1        | 57,84 | 58       | 24,2  | 180     | START of Profile 012               | 059             |                 |
| 06:08      | 03/06/      | 1        | 57,84 | 58       | 21,5  | 180     | END of Profile 012                 | 059             |                 |
| 06:14      | 03/06/      | 1        | 58,03 | 58       | 21,5  | 360     | START of Profile 013               | 060             |                 |
| 06:40      | 03/06/      | 1        | 58,03 | 58       | 24,2  | 360     | END of Profile 013                 | 060             |                 |
| 06:49      | 03/06/      | 1        | 58,22 | 58       | 24,2  | 180     | START of Profile 014               | 061             |                 |
|            | 03/06/      | 1        | 58,22 | 58       | 21,5  | 180     | END of Profile 014                 | 061             |                 |
| <b>UTC</b> | <b>2011</b> | <b>E</b> |       | <b>N</b> |       |         | <b>N-WELL 15/7-02 SLEIPNER</b>     |                 | <b>SLEIPNER</b> |
| 18:42      | 03/06/      | 1        | 56,85 | 58       | 24    | 28      | START of Profile 015               | 062             | 063             |
| 19:36      | 03/06/      | 2        | 01,46 | 58       | 28,65 | 28      | END of Profile 015                 | 062             | 063             |
| 19:44      | 03/06/      | 2        | 01,66 | 58       | 28,65 | 208     | START of Profile 016               | 064             | 065             |
| 20:39      | 03/06/      | 1        | 57,05 | 58       | 24    | 208     | END of Profile 016                 | 064             | 065             |
| 20:47      | 03/06/      | 1        | 57,25 | 58       | 24    | 28      | START of Profile 017               | 066             | 067             |
| 21:43      | 03/06/      | 2        | 01,86 | 58       | 28,65 | 28      | END of Profile 017                 | 066             | 067             |
| 21:49      | 03/06/      | 2        | 02,06 | 58       | 28,65 | 208     | START of Profile 018               | 068             | 069             |

| TIME       | DATE        | LONG     | dec'  | LAT      | dec'  | Heading | NOTE / WORKING AREA               | FILE-NAME-START | FILE-NAME-END   |
|------------|-------------|----------|-------|----------|-------|---------|-----------------------------------|-----------------|-----------------|
| 22:46      | 03/06/      | 1        | 57,45 | 58       | 24    | 208     | END of Profile 018                | 068             | 069             |
| 22:53      | 03/06/      | 1        | 57,65 | 58       | 24    | 28      | START of Profile 019              | 070             | 071             |
| 23:50      | 03/06/      | 2        | 02,26 | 58       | 28,65 | 28      | END of Profile 019                | 070             | 071             |
| 23:56      | 03/06/      | 2        | 02,46 | 58       | 28,65 | 208     | START of Profile 020              | 072             | 073             |
| 00:52      | 04/06/      | 1        | 57,85 | 58       | 24    | 208     | END of Profile 020                | 072             | 073             |
| <b>UTC</b> | <b>2011</b> | <b>E</b> |       | <b>N</b> |       |         | <b>NW-WELL 15/9-11 SLEIPNER</b>   |                 | <b>SLEIPNER</b> |
| 01:11      | 04/06/      | 01       | 56    | 58       | 24,4  | 270     | START of Profile 021              | 074             | 074             |
| 01:35      | 04/06/      | 01       | 52    | 58       | 24,4  | 270     | END of Profile 021                | 074             | 074             |
| 01:42      | 04/06/      | 01       | 52    | 58       | 24,3  | 90      | START of Profile 022              | 075             | 075             |
| 02:04      | 04/06/      | 01       | 56    | 58       | 24,3  | 90      | END of Profile 022                | 075             | 075             |
| 02:12      | 04/06/      | 01       | 56    | 58       | 24,2  | 270     | START of Profile 023              | 076             | 076             |
| 02:35      | 04/06/      | 01       | 52    | 58       | 24,2  | 270     | END of Profile 023                | 076             | 076             |
| 02:41      | 04/06/      | 01       | 52    | 58       | 24,1  | 90      | START of Profile 024              | 077             | 077             |
| 3:06       | 04/06/      | 01       | 56    | 58       | 24,1  | 90      | END of Profile 024                | 077             | 077             |
| 03:13      | 04/06/      | 01       | 56    | 58       | 24    | 270     | START of Profile 025              | 078             | 078             |
| 03:37      | 04/06/      | 01       | 52    | 58       | 24    | 270     | END of Profile 025                | 078             | 078             |
| 03:44      | 04/06/      | 01       | 52    | 58       | 23,9  | 90      | START of Profile 026              | 079             | 079             |
| 04:07      | 04/06/      | 01       | 56    | 58       | 23,9  | 90      | END of Profile 026                | 079             | 079             |
| 04:16      | 04/06/      | 01       | 56    | 58       | 23,8  | 270     | START of Profile 027              | 080             | 080             |
| 04:39      | 04/06/      | 01       | 52    | 58       | 23,8  | 270     | END of Profile 027                | 080             | 080             |
| 04:47      | 04/06/      | 01       | 52    | 58       | 23,7  | 90      | START of Profile 028              | 081             | 081             |
| 05:11      | 04/06/      | 01       | 56    | 58       | 23,7  | 90      | END of Profile 028                | 081             | 081             |
| <b>UTC</b> | <b>2011</b> | <b>E</b> |       | <b>N</b> |       |         | <b>W-WELL 15/9-16 SLEIPNER</b>    |                 | <b>SLEIPNER</b> |
| 20:55      | 04/06/      | 01       | 52    | 58       | 23,8  | 180     | START of Profile 029              | 082             | 082             |
| 21:16      | 04/06/      | 01       | 52    | 58       | 21,8  | 180     | END of Profile 029                | 082             | 082             |
| 21:25      | 04/06/      | 01       | 52,19 | 58       | 21,8  | 360     | START of Profile 030              | 083             | 083             |
| 21:46      | 04/06/      | 01       | 52,19 | 58       | 23,8  | 360     | END of Profile 030                | 083             | 083             |
| 21:53      | 04/06/      | 01       | 52,38 | 58       | 23,8  | 180     | START of Profile 031              | 084             | 084             |
| 22:14      | 04/06/      | 01       | 52,38 | 58       | 21,8  | 180     | END of Profile 031                | 084             | 084             |
| 22:22      | 04/06/      | 01       | 52,57 | 58       | 21,8  | 360     | START of Profile 032              | 085             | 085             |
| 22:45      | 04/06/      | 01       | 52,57 | 58       | 23,8  | 360     | END of Profile 032                | 085             | 085             |
| 22:51      | 04/06/      | 01       | 52,76 | 58       | 23,8  | 180     | START of Profile 033              | 086             | 086             |
| 23:12      | 04/06/      | 01       | 52,76 | 58       | 21,8  | 180     | END of Profile 033                | 086             | 086             |
| 23:21      | 04/06/      | 01       | 52,95 | 58       | 21,8  | 360     | START of Profile 034              | 087             | 087             |
| 23:43      | 04/06/      | 01       | 52,95 | 58       | 23,8  | 360     | END of Profile 034                | 087             | 087             |
| <b>UTC</b> | <b>2011</b> | <b>E</b> |       | <b>N</b> |       |         | <b>Well 22/4-b BLOWOUT CRATER</b> |                 | <b>BLOWOUT</b>  |
| 17:51      | 06/06/      | 1        | 37    | 57       | 55,3  | 90      | START of Profile 001              | 088             | 088             |
| 18:05      | 06/06/      | 1        | 39    | 57       | 55,3  | 90      | END of Profile 001                | 088             | 088             |
| 18:25      | 06/06/      | 1        | 39    | 57       | 56    | 220     | START of Profile 002              | 089             | 089             |
| 18:47      | 06/06/      | 1        | 37    | 57       | 54,8  | 220     | END of Profile 002                | 089             | 089             |
| 19:00      | 06/06/      | 1        | 38    | 57       | 54,8  | 360     | START of Profile 003              | 090             | 090             |
| 19:15      | 06/06/      | 1        | 38    | 57       | 56    | 360     | END of Profile 003                | 090             | 090             |
| 19:24      | 06/06/      | 1        | 37,85 | 57       | 56    | 180     | START of Profile 004              | 091             | 091             |
| 19:39      | 06/06/      | 1        | 37,85 | 57       | 54,8  | 180     | END of Profile 004                | 091             | 091             |
| 19:50      | 06/06/      | 1        | 37,85 | 57       | 56    | 360     | START of Profile 005              | 092             | 092             |
| 20:04      | 06/06/      | 1        | 37,85 | 57       | 54,8  | 360     | END of Profile 005                | 092             | 092             |

| TIME       | DATE        | LONG     | dec'  | LAT      | dec'  | Heading | NOTE / WORKING AREA               | FILE-NAME-START | FILE-NAME-END   |
|------------|-------------|----------|-------|----------|-------|---------|-----------------------------------|-----------------|-----------------|
| 20:16      | 06/06/      | 1        | 37    | 57       | 54,8  | 180     | START of Profile 006              | 093             | 093             |
| 20:31      | 06/06/      | 1        | 37    | 57       | 56    | 180     | END of Profile 006                | 093             | 093             |
| 20:41      | 06/06/      | 1        | 37,2  | 57       | 56    | 360     | START of Profile 007              | 094             | 094             |
| 20:55      | 06/06/      | 1        | 37,2  | 57       | 54,8  | 360     | END of Profile 007                | 094             | 094             |
| 21:04      | 06/06/      | 1        | 37,4  | 57       | 54,8  | 180     | START of Profile 008              | 095             | 095             |
| 21:20      | 06/06/      | 1        | 37,4  | 57       | 56    | 180     | END of Profile 008                | 095             | 095             |
| 21:30      | 06/06/      | 1        | 37,6  | 57       | 56    | 360     | START of Profile 009              | 096             | 096             |
| 21:45      | 06/06/      | 1        | 37,6  | 57       | 54,8  | 360     | END of Profile 009                | 096             | 096             |
| 21:52      | 06/06/      | 1        | 37,8  | 57       | 54,8  | 180     | START of Profile 010              | 097             | 097             |
| 22:09      | 06/06/      | 1        | 37,8  | 57       | 56    | 180     | END of Profile 010                | 097             | 097             |
| 22:15      | 06/06/      | 1        | 38    | 57       | 56    | 360     | START of Profile 011              | 098             | 098             |
| 22:31      | 06/06/      | 1        | 38    | 57       | 54,8  | 360     | END of Profile 011                | 098             | 098             |
| 22:41      | 06/06/      | 1        | 38,2  | 57       | 54,8  | 180     | START of Profile 012              | 099             | 099             |
| 22:57      | 06/06/      | 1        | 38,2  | 57       | 56    | 180     | END of Profile 012                | 099             | 099             |
| 23:05      | 06/06/      | 1        | 38,4  | 57       | 56    | 360     | START of Profile 013              | 100             | 100             |
| 23:20      | 06/06/      | 1        | 38,4  | 57       | 54,8  | 360     | END of Profile 013                | 100             | 100             |
| 23:29      | 06/06/      | 1        | 38,6  | 57       | 54,8  | 180     | START of Profile 014              | 101             | 101             |
| 23:44      | 06/06/      | 1        | 38,6  | 57       | 56    | 180     | END of Profile 014                | 101             | 101             |
| 23:52      | 06/06/      | 1        | 38,8  | 57       | 56    | 360     | START of Profile 015              | 102             | 102             |
| 00:08      | 07/06/      | 1        | 38,8  | 57       | 54,8  | 360     | END of Profile 015                | 102             | 102             |
| 00:15      | 07/06/      | 1        | 39    | 57       | 54,8  | 180     | START of Profile 016              | 103             | 103             |
| 00:30      | 07/06/      | 1        | 39    | 57       | 56    | 180     | END of Profile 016                | 103             | 103             |
|            | 07/06/      | 1        | 38,2  | 57       | 55,2  | 302     | START of Profile 017              | 104             | 104             |
| 01:08      | 07/06/      | 1        | 37,5  | 57       | 55,4  | 302     | END of Profile 017                | 104             | 104             |
| 01:29      | 07/06/      | 1        | 37,7  | 57       | 55,35 | 302     | START of Profile 018              | 105             | 105             |
| 01:33      | 07/06/      | 1        | 38    | 57       | 55,25 | 302     | END of Profile 018                | 105             | 105             |
| 01:45      | 07/06/      | 1        | 38    | 57       | 55,35 | 302     | START of Profile 019              | 106             | 106             |
| 01:54      | 07/06/      | 1        | 37,7  | 57       | 55,25 | 302     | END of Profile 019                | 106             | 106             |
| <b>UTC</b> | <b>2011</b> | <b>E</b> |       | <b>N</b> |       |         | <b>SLEIPNER S</b>                 |                 | <b>SLEIPNER</b> |
| 18:00      | 08/06/      | 1        | 58    | 58       | 21,5  | 270     | START of Profile 001              | 107             | 107             |
| 18:33      | 08/06/      | 1        | 53    | 58       | 22    | 270     | END of Profile 001                | 107             | 107             |
| 18:43      | 08/06/      | 1        | 52,81 | 58       | 21,95 | 90      | START of Profile 002              | 108             | 108             |
| 19:17      | 08/06/      | 1        | 58    | 58       | 21,4  | 90      | END of Profile 002                | 108             | 108             |
| ~19:26     | 08/06/      | 1        | 58    | 58       | 21,3  | 270     | START of Profile 003              | 109             | 110             |
| 20:00      | 08/06/      | 1        | 52,62 | 58       | 21,9  | 270     | END of Profile 003                | 109             | 110             |
| 20:07      | 08/06/      | 1        | 52,43 | 58       | 21,85 | 90      | START of Profile 004              | 111             | 112             |
| 20:45      | 08/06/      | 1        | 58    | 58       | 21,2  | 90      | END of Profile 004                | 111             | 112             |
| 20:53      | 08/06/      | 1        | 58    | 58       | 21,1  | 270     | START of Profile 005              | 113             | 114             |
|            | 08/06/      | 1        | 52,24 | 58       | 21,8  | 270     | ZIGZAG at the END of              | 113             | 114             |
|            | 08/06/      | 1        | 21,8  | 58       | 52,05 |         | ZIGZAG at the END of              | 113             | 114             |
|            | 08/06/      | 1        | 21,1  | 58       | 52,35 |         | ZIGZAG at the END of              | 113             | 11              |
|            | 08/06/      | 1        | 21,1  | 58       | 52,16 |         | ZIGZAG at the END of              | 113             | 114             |
| 22:02      | 08/06/      | 1        | 21,8  | 58       | 51,86 |         | END of Profile 005                | 113             | 114             |
| <b>UTC</b> | <b>2011</b> | <b>E</b> |       | <b>N</b> |       |         | <b>Well 22/4-b BLOWOUT CRATER</b> |                 | <b>BLOWOUT</b>  |
| 15:01      | 09/06/      | 1        | 37,5  | 57       | 55,15 |         | SEDIMENT ECHOSOUNDER              | 115             | 120             |
| 18:12      | 09/06/      | 1        | 37,5  | 57       | 55,45 |         |                                   | 115             | 120             |



**ANNEX III: DIC AND DISSOLVED GAS SAMPLES**

| Station No. | CTD Profile | Date       | Location           | Niskin Btl. | "Tracy" No    | DICvial |
|-------------|-------------|------------|--------------------|-------------|---------------|---------|
| 495         | 1-2         | 30.05.2011 | Salt Dome<br>Juist | 1           | AL374_CH4_028 | 1       |
|             |             |            |                    | 2           | AL374_CH4_030 | 2       |
|             |             |            |                    | 3           | AL374_CH4_031 | 3       |
|             |             |            |                    | 4           | AL374_CH4_032 | 4       |
|             |             |            |                    | 5           | AL374_CH4_033 | 5       |
|             |             |            |                    | 6           | AL374_CH4_034 | 6       |
|             |             |            |                    | 7           | AL374_CH4_035 | 7       |
|             |             |            |                    | 8           | AL374_CH4_036 | 8       |
|             |             |            |                    | 9           | -             | 9       |
|             |             |            |                    | 10          | AL374_CH4_037 | 10      |
| 506         | 4           | 02.06.2011 | Sleipner           | 1           | AL374_CH4_090 |         |
|             |             |            |                    | 2           | AL374_CH4_091 |         |
|             |             |            |                    | 3           | AL374_CH4_092 |         |
|             |             |            |                    | 4           | AL374_CH4_093 |         |
|             |             |            |                    | 5           | AL374_CH4_094 |         |
|             |             |            |                    | 6           | AL374_CH4_095 |         |
|             |             |            |                    | 7           | AL374_CH4_096 |         |
|             |             |            |                    | 8           | AL374_CH4_097 |         |
|             |             |            |                    | 9           | AL374_CH4_098 |         |
|             |             |            |                    | 10          | AL374_CH4_099 |         |
|             |             |            |                    | 11          | AL374_CH4_100 |         |
|             |             |            |                    | 12          | AL374_CH4_101 |         |
| 513         | 5           | 03.06.2011 | Sleipner           | 1           | AL374_CH4_120 | 11      |
|             |             |            |                    | 2           | AL374_CH4_121 | 12      |
|             |             |            |                    | 3           | AL374_CH4_122 | 13      |
|             |             |            |                    | 4           | AL374_CH4_123 | 14      |
|             |             |            |                    | 5           | AL374_CH4_124 | 15      |
|             |             |            |                    | 6           | AL374_CH4_125 | 16      |
|             |             |            |                    | 7           | AL374_CH4_126 | 17      |
|             |             |            |                    | 8           | AL374_CH4_127 | 18      |
|             |             |            |                    | 9           | AL374_CH4_128 | 19      |
|             |             |            |                    | 10          | AL374_CH4_129 | 20      |
|             |             |            |                    | 11          | AL374_CH4_130 | 21      |
|             |             |            |                    | 12          | AL374_CH4_131 | 22      |
| 520         | 6           | 04.06.2011 | Sleipner           | 1           | AL374_CH4_185 |         |
|             |             |            |                    | 2           | AL374_CH4_186 |         |
|             |             |            |                    | 3           | AL374_CH4_187 |         |
|             |             |            |                    | 4           | AL374_CH4_188 |         |
|             |             |            |                    | 5           | AL374_CH4_189 |         |
|             |             |            |                    | 6           | AL374_CH4_190 |         |
|             |             |            |                    | 7           | AL374_CH4_191 |         |

| Station No. | CTD Profile | Date       | Location | Niskin Btl. | "Tracy" No                        | DICvial |
|-------------|-------------|------------|----------|-------------|-----------------------------------|---------|
|             |             |            |          | 8           | AL374_CH4_192                     |         |
|             |             |            |          | 9           | AL374_CH4_193                     |         |
|             |             |            |          | 10          | AL374_CH4_194                     |         |
|             |             |            |          | 11          | AL374_CH4_195                     |         |
|             |             |            |          | 12          | AL374_CH4_196                     |         |
| 524         | 7           | 05.06.2011 | Sleipner | 1           | AL374_CH4_second_sample_table_067 | 23      |
|             |             |            |          | 2           | AL374_CH4_second_sample_table_068 | 24      |
|             |             |            |          | 3           | AL374_CH4_second_sample_table_069 | 25      |
|             |             |            |          | 4_1         | AL374_CH4_second_sample_table_070 | 26      |
|             |             |            |          | 4_2         | AL374_CH4_second_sample_table_071 |         |
|             |             |            |          | 5           | AL374_CH4_second_sample_table_072 | 27      |
|             |             |            |          | 6           | AL374_CH4_second_sample_table_073 | 28      |
|             |             |            |          | 7           | AL374_CH4_second_sample_table_074 | 29      |
|             |             |            |          | 8           | AL374_CH4_second_sample_table_075 | 30      |
|             |             |            |          | 9           | AL374_CH4_second_sample_table_076 | 31      |
|             |             |            |          | 10          | AL374_CH4_second_sample_table_077 | 32      |
|             |             |            |          | 11          | AL374_CH4_second_sample_table_078 | 33      |
|             |             |            |          | 12          | AL374_CH4_second_sample_table_079 | 34      |
| 534         | 8           | 07.06.2011 | Blowout  | 1           | AL374_CH4_second_sample_table_099 |         |
|             |             |            |          | 2           | AL374_CH4_second_sample_table_100 |         |
|             |             |            |          | 3           | AL374_CH4_second_sample_table_101 |         |
|             |             |            |          | 4           | AL374_CH4_second_sample_table_102 |         |
|             |             |            |          | 5           | AL374_CH4_second_sample_table_103 |         |
|             |             |            |          | 6           | AL374_CH4_second_sample_table_104 |         |
|             |             |            |          | 7           | AL374_CH4_second_sample_table_105 |         |
|             |             |            |          | 8           | AL374_CH4_second_sample_table_106 |         |
|             |             |            |          | 9           | AL374_CH4_second_sample_table_107 |         |
|             |             |            |          | 10          | AL374_CH4_second_sample_table_108 |         |
|             |             |            |          | 11          | AL374_CH4_second_sample_table_109 |         |
|             |             |            |          | 12          | AL374_CH4_second_sample_table_110 |         |
| 538         | 9           | 08.06.2011 | Sleipner | 1           | AL374_CH4_third_sample_table_139  | 35      |
|             |             |            |          | 2           | AL374_CH4_third_sample_table_140  | 36      |
|             |             |            |          | 3           |                                   | 37      |
|             |             |            |          | 4           | AL374_CH4_third_sample_table_141  | 38      |
|             |             |            |          | 5           | AL374_CH4_third_sample_table_142  | 39      |
|             |             |            |          | 6           | AL374_CH4_third_sample_table_143  | 40      |
|             |             |            |          | 7           | AL374_CH4_third_sample_table_144  | 41      |
|             |             |            |          | 8           | AL374_CH4_third_sample_table_145  | 42      |
|             |             |            |          | 9           | AL374_CH4_third_sample_table_146  | 42      |
|             |             |            |          | 10          | AL374_CH4_third_sample_table_147  | 44      |
|             |             |            |          | 11          | AL374_CH4_third_sample_table_148  | 45      |
|             |             |            |          | 12          | AL374_CH4_third_sample_table_149  | 46      |
| 540         | 10          | 09.06.2011 | Blowout  | 1           | AL374_CH4_second_sample_table_144 |         |
|             |             |            |          | 2           | AL374_CH4_second_sample_table_145 |         |
|             |             |            |          | 3           | AL374_CH4_second_sample_table_146 |         |
|             |             |            |          | 4           | AL374_CH4_second_sample_table_147 |         |

| Station No. | CTD Profile | Date       | Location | Niskin Btl. | "Tracy" No                        | DICvial |
|-------------|-------------|------------|----------|-------------|-----------------------------------|---------|
|             |             |            |          | 5           | AL374_CH4_second_sample_table_148 |         |
|             |             |            |          | 6_2         | AL374_CH4_third_sample_table_102  |         |
|             |             |            |          | 7           | AL374_CH4_second_sample_table_151 |         |
|             |             |            |          | 8           | AL374_CH4_second_sample_table_152 |         |
|             |             |            |          | 9           | AL374_CH4_second_sample_table_153 |         |
|             |             |            |          | 10          | AL374_CH4_second_sample_table_154 |         |
|             |             |            |          | 11          | AL374_CH4_second_sample_table_155 |         |
|             |             |            |          | 12          | AL374_CH4_second_sample_table_156 |         |
| 542         | 11          | 10.06.2011 | Blowout  | 1           | AL374_CH4_third_sample_table_086  |         |
|             |             |            |          | 2           | AL374_CH4_third_sample_table_087  |         |
|             |             |            |          | 3           | AL374_CH4_third_sample_table_088  |         |
|             |             |            |          | 4           | AL374_CH4_third_sample_table_089  |         |
|             |             |            |          | 5           | AL374_CH4_third_sample_table_090  |         |
|             |             |            |          | 6           | AL374_CH4_third_sample_table_091  |         |
|             |             |            |          | 7           | AL374_CH4_third_sample_table_092  |         |
|             |             |            |          | 8           | AL374_CH4_third_sample_table_093  |         |
|             |             |            |          | 9           | AL374_CH4_third_sample_table_096  |         |
|             |             |            |          | 10          | AL374_CH4_third_sample_table_097  |         |
|             |             |            |          | 11          | AL374_CH4_third_sample_table_100  |         |
|             |             |            |          | 12          | AL374_CH4_third_sample_table_101  |         |
| 543         | 12          | 10.06.2011 | Blowout  | 1           | AL374_CH4_third_sample_table_069  |         |
|             |             |            |          | 2           | AL374_CH4_third_sample_table_070  |         |
|             |             |            |          | 3           | AL374_CH4_third_sample_table_071  |         |
|             |             |            |          | 4           | AL374_CH4_third_sample_table_072  |         |
|             |             |            |          | 5           | AL374_CH4_third_sample_table_073  |         |
|             |             |            |          | 6           | AL374_CH4_third_sample_table_074  |         |
|             |             |            |          | 7           | AL374_CH4_third_sample_table_075  |         |
|             |             |            |          | 8           | AL374_CH4_third_sample_table_076  |         |
|             |             |            |          | 9           | AL374_CH4_third_sample_table_077  |         |
|             |             |            |          | 10          | AL374_CH4_third_sample_table_078  |         |
|             |             |            |          | 11          | AL374_CH4_third_sample_table_079  |         |
|             |             |            |          | 12          | AL374_CH4_third_sample_table_080  |         |
| 543         | 12          | 10.06.2011 | Blowout  | I           | AL374_CH4_third_sample_table_081  |         |
| Air samples |             |            |          | II          | AL374_CH4_third_sample_table_082  |         |
|             |             |            |          | III         | AL374_CH4_third_sample_table_083  |         |
|             |             |            |          | IV          | AL374_CH4_third_sample_table_085  |         |
| 546         | 13          | 11.06.2011 | Sleipner | 1           | AL374_CH4_third_sample_table_060  | 47      |
|             |             |            |          | 2           | AL374_CH4_third_sample_table_061  | 48      |

## IFM-GEOMAR Reports

- | No. | Title   |
|-----|---|
| 1   | RV Sonne Fahrtbericht / Cruise Report SO176 & 179 MERAMEX I & II (Merapi Amphibious Experiment) 18.05.-01.06.04 & 16.09.-07.10.04. Ed. by Heidrun Kopp & Ernst R. Flueh, 2004, 206 pp.<br>In English  |
| 2   | RV Sonne Fahrtbericht / Cruise Report SO181 TIPTEQ (from The Incoming Plate to mega Thrust EarthQuakes) 06.12.2004.-26.02.2005. Ed. by Ernst R. Flueh & Ingo Grevemeyer, 2005, 533 pp.<br>In English  |
| 3   | RV Poseidon Fahrtbericht / Cruise Report POS 316 Carbonate Mounds and Aphotic Corals in the NE-Atlantic 03.08.-17.08.2004. Ed. by Olaf Pfannkuche & Christine Utecht, 2005, 64 pp.<br>In English  |
| 4   | RV Sonne Fahrtbericht / Cruise Report SO177 - (Sino-German Cooperative Project, South China Sea: Distribution, Formation and Effect of Methane & Gas Hydrate on the Environment) 02.06.-20.07.2004. Ed. by Erwin Suess, Yongyang Huang, Nengyou Wu, Xiqiu Han & Xin Su, 2005, 154 pp.<br>In English and Chinese |
| 5   | RV Sonne Fahrtbericht / Cruise Report SO186 – GITEWS (German Indonesian Tsunami Early Warning System 28.10.-13.1.2005 & 15.11.-28.11.2005 & 07.01.-20.01.2006. Ed. by Ernst R. Flueh, Tilo Schoene & Wilhelm Weinrebe, 2006, 169 pp.<br>In English  |
| 6   | RV Sonne Fahrtbericht / Cruise Report SO186 -3 – SeaCause II, 26.02.-16.03.2006. Ed. by Heidrun Kopp & Ernst R. Flueh, 2006, 174 pp.<br>In English  |
| 7   | RV Meteor, Fahrtbericht / Cruise Report M67/1 CHILE-MARGIN-SURVEY 20.02.-13.03.2006. Ed. by Wilhelm Weinrebe und Silke Schenk, 2006, 112 pp.<br>In English  |
| 8   | RV Sonne Fahrtbericht / Cruise Report SO190 - SINDBAD (Seismic and Geoacoustic Investigations Along The Sunda-Banda Arc Transition) 10.11.2006 - 24.12.2006. Ed. by Heidrun Kopp & Ernst R. Flueh, 2006, 193 pp.<br>In English  |
| 9   | RV Sonne Fahrtbericht / Cruise Report SO191 - New Vents "Puaretanga Hou" 11.01. - 23.03.2007. Ed. by Jörg Bialas, Jens Greinert, Peter Linke, Olaf Pfannkuche, 2007, 190 pp.<br>In English  |
| 10  | FS ALKOR Fahrtbericht / Cruise Report AL 275 - Geobiological investigations and sampling of aphotic coral reef ecosystems in the NE-Skagerrak, 24.03. - 30.03.2006, Eds.: Andres Rüggeberg & Armin Form, 39 pp. In English  |

| No. | Title  |
|-----|--|
| 11  | FS Sonne / Fahrtbericht / Cruise Report SO192-1: MANGO: Marine Geoscientific Investigations on the Input and Output of the Kermadec Subduction Zone, 24.03. - 22.04.2007, Ernst Flüh & Heidrun Kopp, 127 pp.<br>In English                                 |
| 12  | FS Maria S. Merian / Fahrtbericht / Cruise Report MSM 04-2: Seismic Wide-Angle Profiles, Fort-de-France – Fort-de-France, 03.01. - 19.01.2007, Ed.: Ernst Flüh, 45 pp.<br>In English   |
| 13  | FS Sonne / Fahrtbericht / Cruise Report SO193: MANIHIKI Temporal, Spatial, and Tectonic Evolution of Oceanic Plateaus, Suva/Fiji – Apia/Samoa 19.05. - 30.06.2007, Eds.: Reinhard Werner and Folkmar Hauff, 201 pp.<br>In English                          |
| 14  | FS Sonne / Fahrtbericht / Cruise Report SO195: TOTAL TONGA Thrust earthquake Asperity at Louisville Ridge, Suva/Fiji – Suva/Fiji 07.01. - 16.02.2008, Eds.: Ingo Grevemeyer & Ernst R. Flüh, 106 pp.<br>In English   |
| 15  | RV Poseidon Fahrtbericht / Cruise Report P362-2: West Nile Delta Mud Volcanoes, Piräus – Heraklion 09.02. - 25.02.2008, Ed.: Thomas Feseker, 63 pp.<br>In English  |
| 16  | RV Poseidon Fahrtbericht / Cruise Report P347: Mauritanian Upwelling and Mixing Process Study (MUMP), Las-Palmas - Las Palmas, 18.01. - 05.02.2007, Ed.: Marcus Dengler et al., 34 pp.<br>In English   |
| 17  | FS Maria S. Merian Fahrtbericht / Cruise Report MSM 04-1: Meridional Overturning Variability Experiment (MOVE 2006), Fort de France – Fort de France, 02.12. - 21.12.2006, Ed.: Thomas J. Müller, 41 pp.<br>In English                                     |
| 18  | FS Poseidon Fahrtbericht /Cruise Report P348: SOPRAN: Mauritanian Upwelling Study 2007, Las Palmas - Las Palmas, 08.02. - 26.02.2007, Ed.: Hermann W. Bange, 42 pp.<br>In English  |
| 19  | R/V L'ATALANTE Fahrtbericht / Cruise Report IFM-GEOMAR-4: Circulation and Oxygen Distribution in the Tropical Atlantic, Mindelo/Cape Verde - Mindelo/Cape Verde, 23.02. - 15. 03.2008, Ed.: Peter Brandt, 65 pp.<br>In English                             |
| 20  | RRS JAMES COOK Fahrtbericht / Cruise Report JC23-A & B: CHILE-MARGIN-SURVEY, OFEG Barter Cruise with SFB 574, 03.03.-25.03. 2008 Valparaiso – Valparaiso, 26.03.-18.04.2008 Valparaiso - Valparaiso, Eds.: Ernst Flüh & Jörg Bialas, 242 pp.<br>In English |
| 21  | FS Poseidon Fahrtbericht / Cruise Report P340 – TYMAS "Tyrrhenische Massivsulfide", Messina – Messina, 06.07.-17.07.2006, Eds.: Sven Petersen and Thomas Monecke, 77 pp.<br>In English   |

| <b>No.</b> | <b>Title</b>   |
|------------|--|
| 22         | RV Atalante Fahrtbericht / Cruise Report HYDROMAR V (replacement of cruise MSM06/2), Toulon, France - Recife, Brazil, 04.12.2007 - 02.01.2008, Ed.: Sven Petersen, 103 pp. In English  |
| 23         | RV Atalante Fahrtbericht / Cruise Report MARSUED IV (replacement of MSM06/3), Recife, Brazil - Dakar, Senegal, 07.01. - 31.01.2008, Ed.: Colin Devey, 126 pp. In English   |
| 24         | RV Poseidon Fahrtbericht / Cruise Report P376 ABYSS Test, Las Palmas - Las Palmas, 10.11. - 03.12.2008, Eds.: Colin Devey and Sven Petersen, 36 pp, In English   |
| 25         | RV SONNE Fahrtbericht / Cruise Report SO 199 CHRISP Christmas Island Seamount Province and the Investigator Ridge: Age and Causes of Intraplate Volcanism and Geodynamic Evolution of the south-eastern Indian Ocean, Merak/Indonesia – Singapore, 02.08.2008 - 22.09.2008, Eds.: Reinhard Werner, Folkmar Hauff and Kaj Hoernle, 210 pp. In English |
| 26         | RV POSEIDON Fahrtbericht / Cruise Report P350: Internal wave and mixing processes studied by contemporaneous hydrographic, current, and seismic measurements, Funchal – Lissabon, 26.04.-10.05.2007 Ed.: Gerd Krahnemann, 32 pp. In English  |
| 27         | RV PELAGIA Fahrtbericht / Cruise Report Cruise 64PE298: West Nile Delta Project Cruise - WND-3, Heraklion - Port Said, 07.11.-25.11.2008, Eds.: Jörg Bialas & Warner Brueckmann, 64 pp. In English   |
| 28         | FS POSEIDON Fahrtbericht / Cruise Report P379/1: Vulkanismus im Karibik-Kanaren-Korridor (ViKKi), Las Palmas – Mindelo, 25.01.-12.02.2009, Ed.: Svend Duggen, 74 pp. In English  |
| 29         | FS POSEIDON Fahrtbericht / Cruise Report P379/2: Mid-Atlantic-Researcher Ridge Volcanism (MARRVi), Mindelo- Fort-de-France, 15.02.-08.03.2009, Ed.: Svend Duggen, 80 pp. In English  |
| 30         | FS METEOR Fahrtbericht / Cruise Report M73/2: Shallow drilling of hydrothermal sites in the Tyrrhenian Sea (PALINDRILL), Genoa – Heraklion, 14.08.2007 – 30.08.2007, Eds.: Sven Petersen & Thomas Monecke, 235 pp. In English  |
| 31         | FS POSEIDON Fahrtbericht / Cruise Report P388: West Nile Delta Project - WND-4, Valetta – Valetta, 13.07. - 04.08.2009, Eds.: Jörg Bialas & Warner Brückmann, 65 pp. In English  |
| 32         | FS SONNE Fahrtbericht / Cruise Report SO201-1b: KALMAR (Kurile-Kamchatka and Aleutian MARGinal Sea-Island Arc Systems): Geodynamic and Climate Interaction in Space and Time, Yokohama, Japan - Tomakomai, Japan, 10.06. - 06.07.2009, Eds.: Reinhard Werner & Folkmar Hauff, 105 pp. In English   |
| 33         | FS SONNE Fahrtbericht / Cruise Report SO203: WOODLARK Magma genesis, tectonics and hydrothermalism in the Woodlark Basin, Townsville, Australia - Auckland, New Zealand 27.10. - 06.12.2009, Ed.: Colin Devey, 177 pp. In English  |

| No. | Title   |
|-----|---|
| 34  | FS MARIA S. MERIAN Fahrtbericht / Cruise Report MSM 03-2: HYDROMAR IV: The 3rd dimension of the Logatchev hydrothermal field, Fort-de-France - Fort-de-France, 08.11. - 30.11.2006, Ed.: Sven Petersen, 98 pp. In English   |
| 35  | FS SONNE Fahrtbericht / Cruise Report SO201-2 <b>KALMAR: Kurile-Kamchatka and ALeutian MARGinal Sea-Island Arc Systems: Geodynamic and Climate Interaction in Space and Time</b> Busan/Korea - Tomakomai/Japan, 30.08. - 08.10.2009, Eds.: Wolf-Christian Dullo, Boris Baranov, and Christel van den Bogaard, 233 pp. In English  |
| 36  | RV CELTIC EXPLORER Fahrtbericht / Cruise Report CE0913: Fluid and gas seepage in the North Sea, Bremerhaven - Bremerhaven, 26.07. - 14.08.2009, Eds.: Peter Linke, Mark Schmidt, CE0913 cruise participants, 90 pp. In English  |
| 37  | FS SONNE Fahrtbericht / Cruise Report: TransBrom SONNE, Tomakomai, Japan - Townsville, Australia, 09.10. - 24.10.2009, Eds.: Birgit Quack & Kirstin Krüger, 84 pp. In English   |
| 38  | FS POSEIDON Fahrtbericht / Cruise Report POS403, Ponta Delgada (Azores) - Ponta Delgada (Azores), 14.08. - 30.08.2010, Eds.: Torsten Kanzow, Andreas Thurnherr, Klas Lackschewitz, Marcel Rothenbeck, Uwe Koy, Christopher Zappa, Jan Sticklus, Nico Augustin, 66 pp. In English  |
| 39  | FS SONNE Fahrtbericht/Cruise Report SO208 Leg 1 & 2 Propagation of Galápagos Plume Material in the Equatorial East Pacific (PLUMEFLUX), Caldera/Costa Rica - Guayaquil/Ecuador 15.07. - 29.08.2010, Eds.: Reinhard Werner, Folkmar Hauff and Kaj Hoernle, 230 pp, In English  |
| 40  | Expedition Report "Glider fleet", Mindelo (São Vicente), Republic of Cape Verde, 05. - 19.03.2010, Ed.: Torsten Kanzow, 26 pp, In English   |
| 41  | FS SONNE Fahrtbericht / Cruise Report SO206, Caldera, Costa Rica - Caldera, Costa Rica, 30.05. - 19.06.2010, Ed.: Christian Hensen, 95 pp, In English   |
| 42  | FS SONNE Fahrtbericht / Cruise Report SO212, Talcahuano, Chile - Valparaiso, Chile, 22.12. - 26.12.2010, Ed.: Ernst Flüh, 47 pp, in English   |
| 43  | RV Chakratong Tongyai Fahrtbericht / Cruise Report MASS-III, Morphodynamics and Slope Stability of the Andaman Sea Shelf Break (Thailand), Phuket - Phuket (Thailand), 11.01. - 24.01.2011, Ed.: Sebastian Krastel, 42 pp, in English.  |
| 44  | FS SONNE Fahrtbericht / Cruise Report SO210, Identification and investigation of fluid flux, mass wasting and sediments in the forearc of the central Chilean subduction zone (ChiFlux), Valparaiso - Valparaiso, 23.09. - 01.11.2010, Ed.: Peter Linke, 112 pp, in English.  |
| 45  | RV Poseidon POS389 & POS393 & RV Maria S. Merian MSM15/5, TOPO-MED - Topographic, structural and seismotectonic consequences of plate re-organization in the Gulf of Cadiz and Alboran Sea - POS 389: Valletta, Malta - Malaga, Spain, 06.-17.08.2009, POS393: Malaga, Spain - Faro, Portugal, 14.-24.01.2010, MSM15/5: Valletta, Malta - Rostock, Germany, 17.-29.07.2010, I. Grevemeyer, 52 pp. |

| <b>No.</b> | <b>Title</b>   |
|------------|--|
| 46         | FS POSEIDON Fahrtbericht / Cruise Report, P408 - The Jeddah Transect, Jeddah - Jeddah, Saudi Arabia, 13.01.-02.03.2011, M. Schmidt, C. Devey, A. Eisenhauer and cruise participants, 80 pp.                  |
| 47         | FS SONNE Fahrtbericht / Cruise Report, SO214 NEMESYS, Wellington - Wellington, 09.03. - 05.04.2011, Wellington - Auckland 06. - 22.04.2011, Ed.: J. Bialas, 174 pp.  |
| 48         | FS POSEIDON Fahrtbericht / Cruise Report, P399 - 2&3, Las Palmas - Las Palmas (Canary Islands), 31.05.2010 - 17.06.2010 & Las Palmas (Canary Islands), Vigo (Spain), 18. - 24.06.2010, Ed.: H. Bange, 84 pp. |
| 49         | RV AEGAEON Fahrtbericht / Cruise Report, West Nile Delta Project Cruise - WND-V, 15.06. - 25.06.2010, Heraklion- Heraklion (Greece), Ed.: W. Brückmann, 51 pp.   |
| 50         | RV POSEIDON Fahrtbericht / Cruise Report P395, Sahara Slide Complex, 04.02. - 19.02.2010, Las Palmas - Las Palmas (Spain), Ed.: S. Krastel, 53 pp.   |





**IFM-GEOMAR**

Leibniz-Institut für Meereswissenschaften  
an der Universität Kiel

Das Leibniz-Institut für Meereswissenschaften  
ist ein Institut der Wissenschaftsgemeinschaft  
Gottfried Wilhelm Leibniz (WGL)

The Leibniz-Institute of Marine Sciences is a  
member of the Leibniz Association  
(Wissenschaftsgemeinschaft Gottfried  
Wilhelm Leibniz).

**Leibniz-Institut für Meereswissenschaften / Leibniz-Institute of Marine Sciences**

IFM-GEOMAR  
Dienstgebäude Westufer / West Shore Building  
Düsternbrooker Weg 20  
D-24105 Kiel  
Germany

**Leibniz-Institut für Meereswissenschaften / Leibniz-Institute of Marine Sciences**

IFM-GEOMAR  
Dienstgebäude Ostufer / East Shore Building  
Wischhofstr. 1-3  
D-24148 Kiel  
Germany

Tel.: ++49 431 600-0  
Fax: ++49 431 600-2805  
[www.ifm-geomar.de](http://www.ifm-geomar.de)