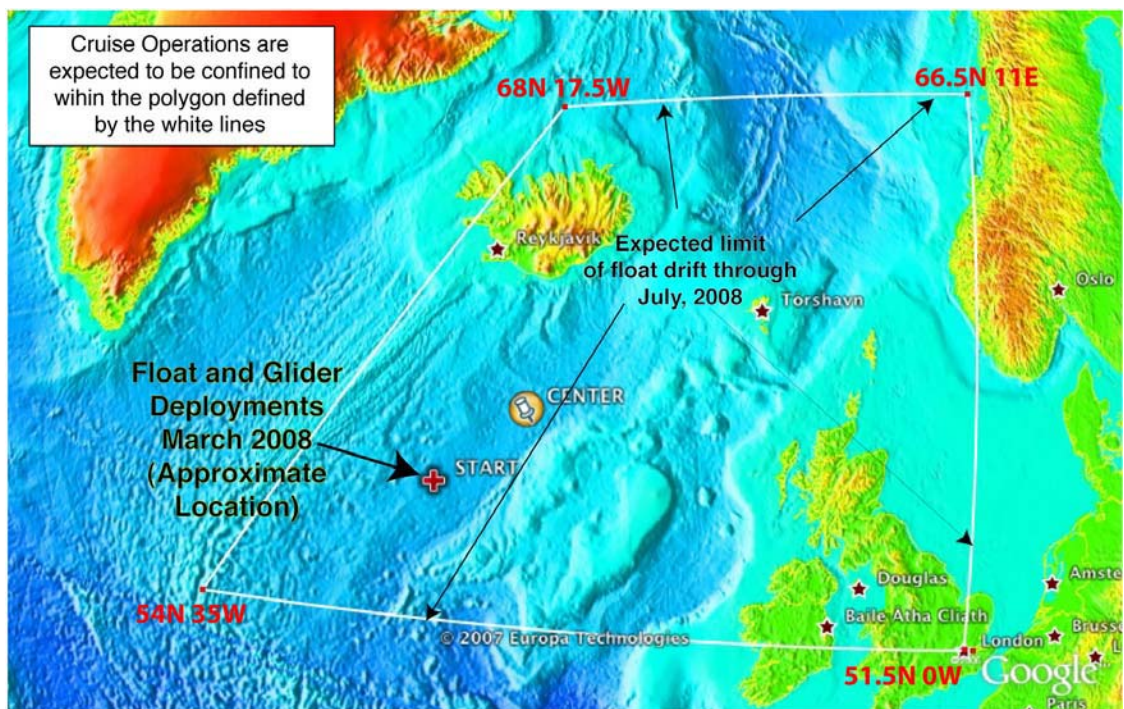


5. Geographical Areas

5.1 Indicate geographical areas in which the project is to be conducted (with reference in latitude and longitude):

Within the following coordinates:
68°N 17.5°W, 54°N 35°W, 51.5°N 0°W, 66.5°N 11°E

5.2 Attach chart(s) at an appropriate scale (1 page, high-resolution) showing the geographical areas of the intended work and, as far as practicable, the positions of intended stations, the tracks of survey lines, and the locations of installations and equipment.



6. Dates

6.1 Expected dates of first entry into and final departure from the research area of the research vessel:

First entry on 26 April with final departure by 31 May 2008.

6.2 Indicate if multiple entry is expected:

Multiple entry is not expected. However, if the floats and gliders being tracked drift in unintended trajectories, multiple entries may be necessary to sample near the floats and gliders, and to retrieve floats.