

*N.B. IF ANY DETAILS ARE MATERIALLY CHANGED REGARDING DATES / AREA OF OPERATION AFTER THIS FORM HAS BEEN SUBMITTED, THE COASTAL STATE'S AUTHORITIES MUST BE NOTIFIED IMMEDIATELY.*

ATTACHMENT I

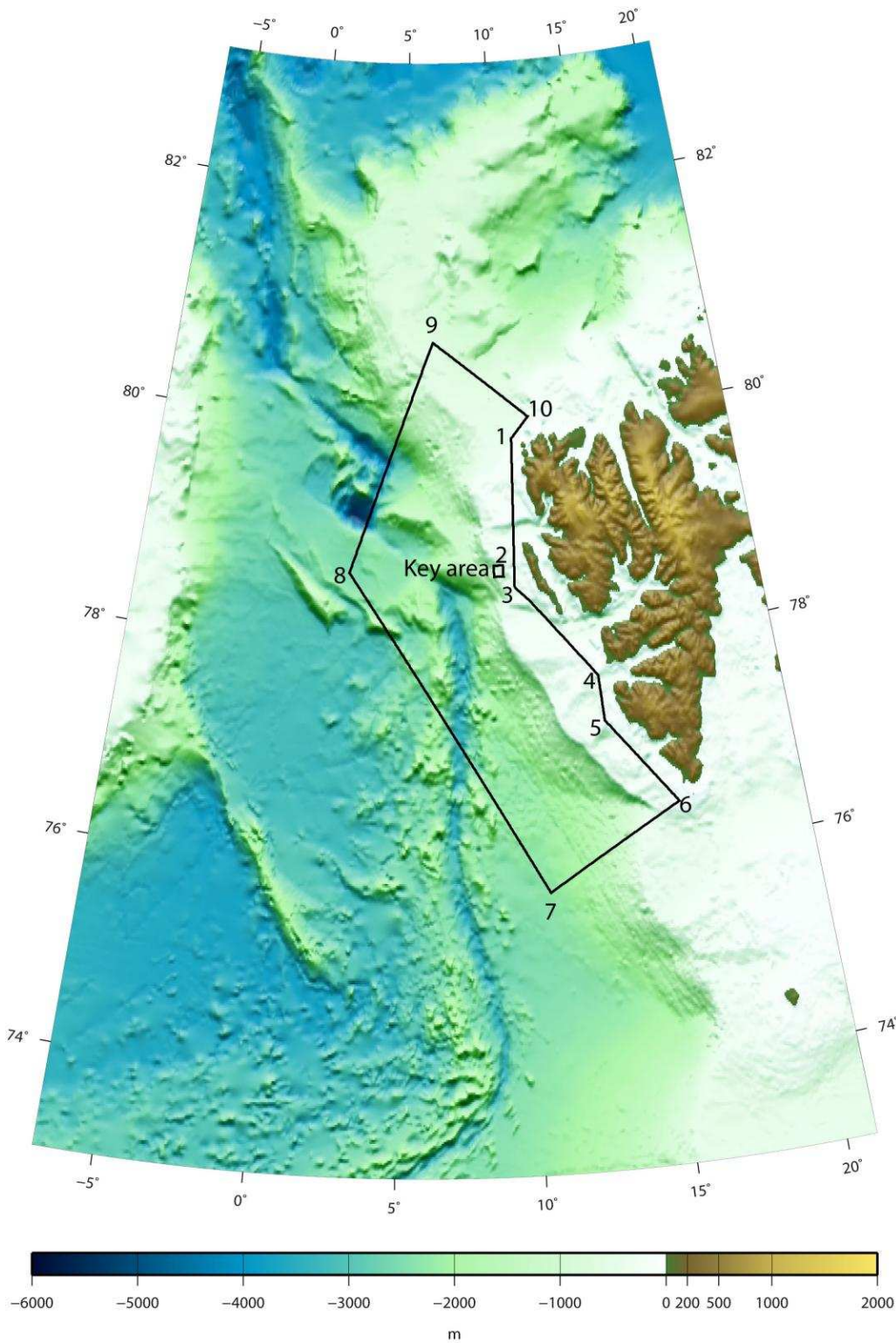


Figure 1: Overview map of the requested research area west of Svalbard (large box). Numbers refer to coordinates given in the General Part A No. 8. A small area (termed key area) is in the focus of the proposed research and shown in detail in Figure 2.